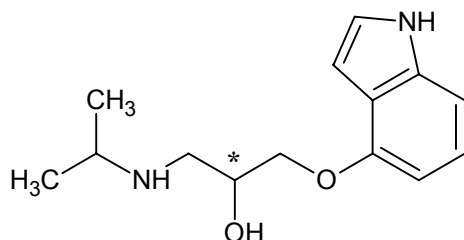
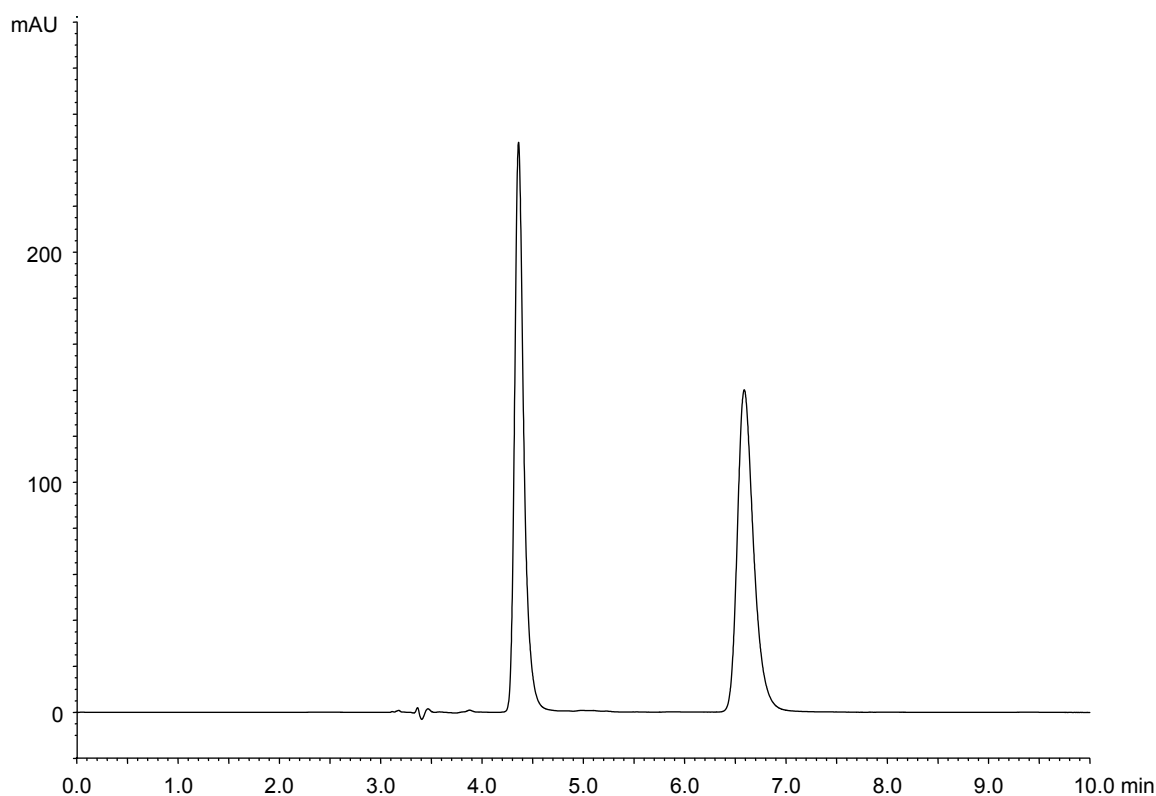


ピンドロール
Pindolol

F150216A



α	2.5
Rs	10.1



Column : CHIRAL ART Cellulose-SB (5 μ m)
250 X 4.6 mm I.D.

Eluent : *n*-hexane/ethanol/diethylamine (40/60/0.1)

Flow rate : 1.0 mL/min

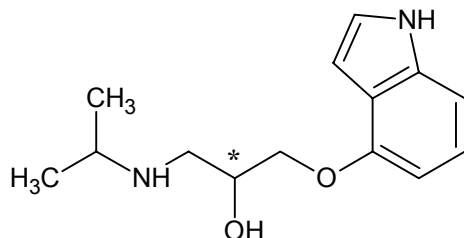
Temperature : 25°C

Detection : UV at 265 nm

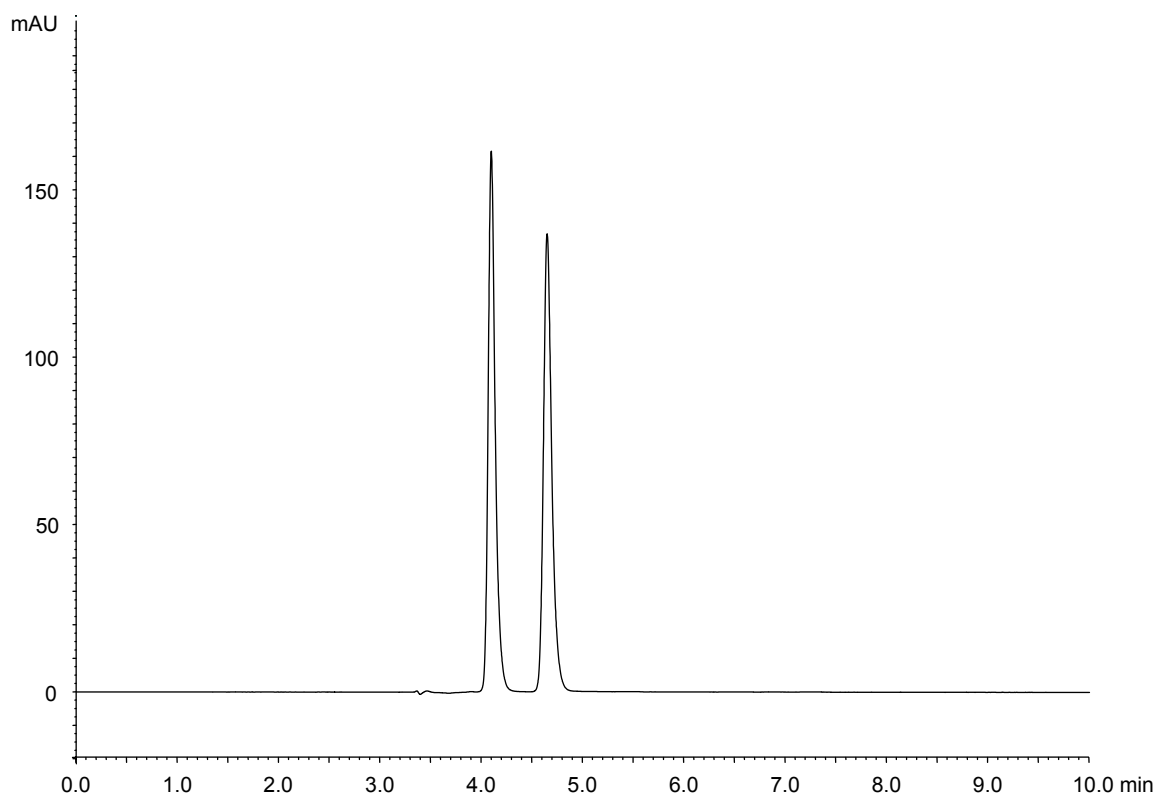
Injection : 10 μ L (100 μ g/mL)

ピンドロール
Pindolol

F150213C



α	1.5
R_s	4.2



Column : CHIRAL ART Cellulose-SB (5 μ m)
250 X 4.6 mm I.D.

Eluent : methanol/diethylamine (100/0.1)

Flow rate : 1.0 mL/min

Temperature : 25°C

Detection : UV at 265 nm

Injection : 10 μ L (100 μ g/mL)