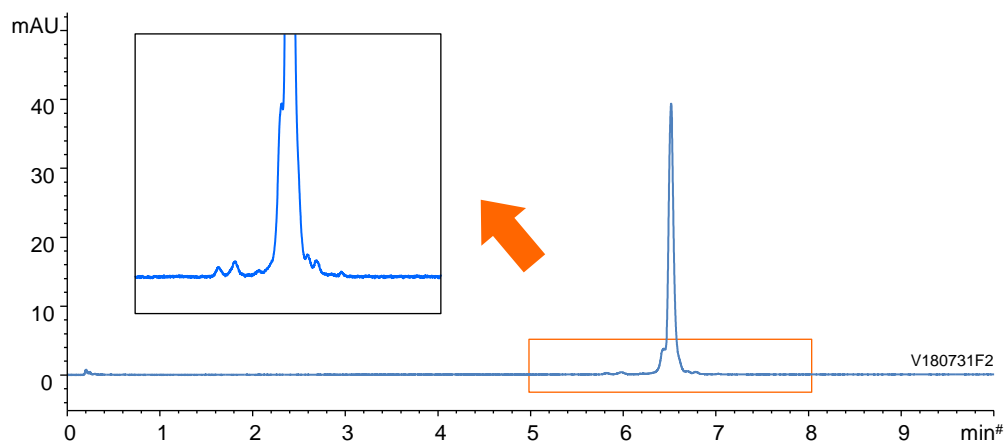


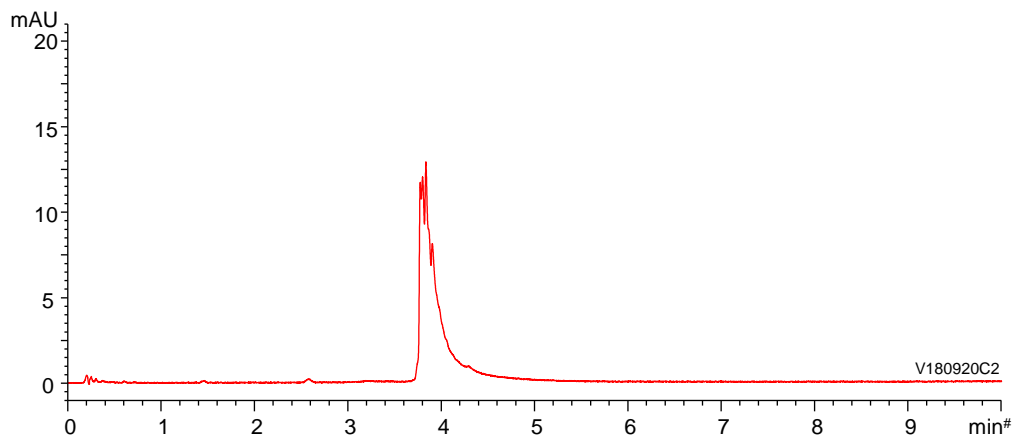
モノクローナル抗体 (NIST reference material 8671)
Monoclonal antibody (NIST reference material 8671)

V180731F

Mobile phase containing 0.1% TFA



Mobile phase containing 0.1% formic acid

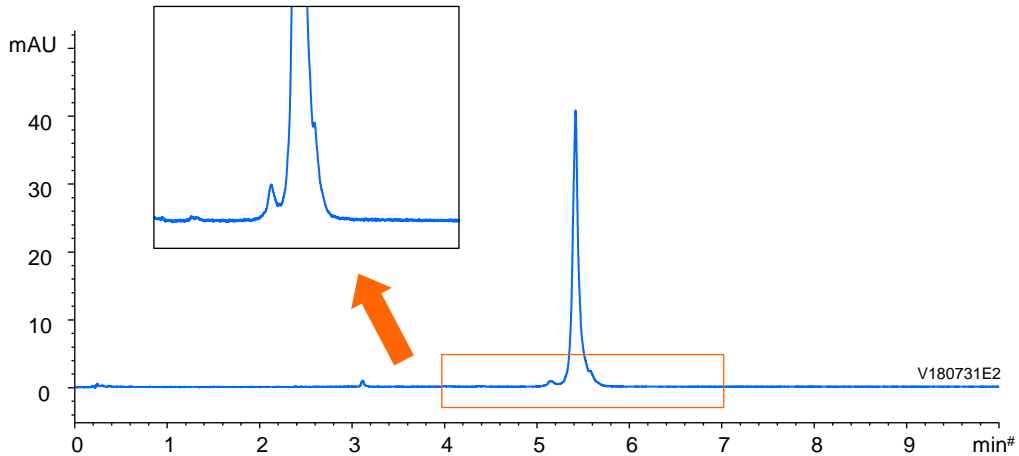


| | |
|-------------|---|
| Column | : YMC-Triart Bio C4 (1.9 μ m, 30 nm) 50 X 2.1 mmI.D. |
| Eluent | : A) water/TFA or formic acid (100/0.1) B) acetonitrile/TFA or formic acid (100/0.1) 25-45%B (0-10 min), 90%B (10-12.5 min) |
| Flow rate | : 0.4 mL/min |
| Temperature | : 80°C |
| Detection | : UV at 280 nm |
| Injection | : 2 μ L (0.5 mg/mL) |

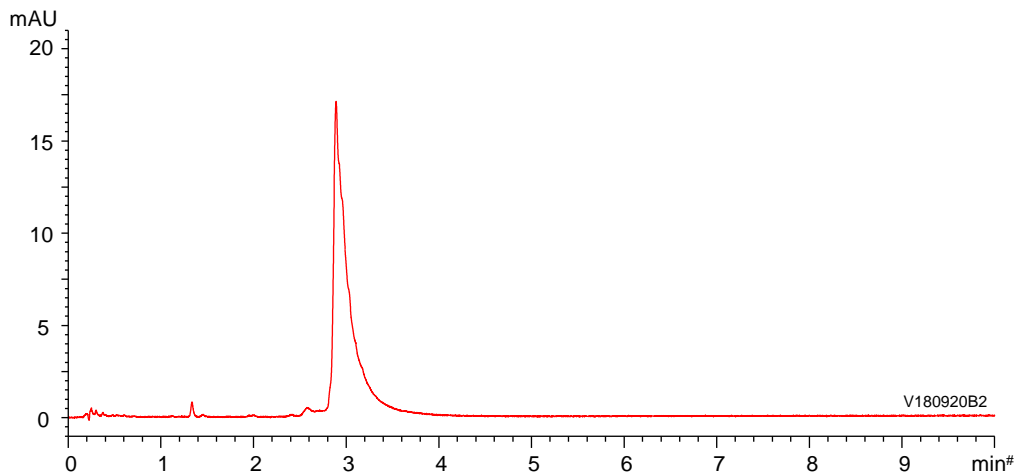
モノクローナル抗体 (ベバシズマブ)
Monoclonal antibody (Bevacizumab)

V180731E

Mobile phase containing 0.1% TFA



Mobile phase containing 0.1% formic acid



Column : YMC-Triart Bio C4 (1.9 μ m, 30 nm)
50 X 2.1 mmI.D.

Eluent : A) water/TFA or formic acid (100/0.1)
B) acetonitrile/TFA or formic acid (100/0.1)
25-45%B (0-10 min), 90%B (10-12.5 min)

Flow rate : 0.4 mL/min

Temperature : 80°C

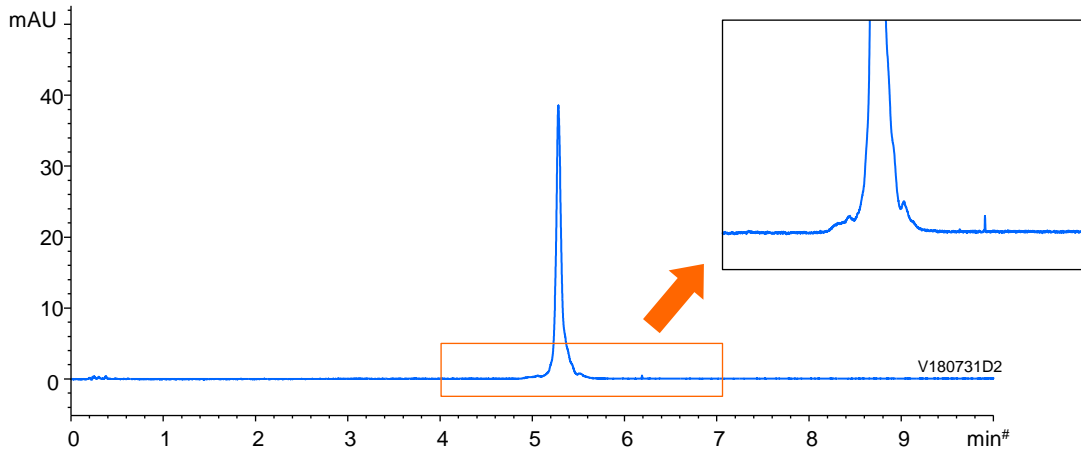
Detection : UV at 280 nm

Injection : 2 μ L (0.5 mg/mL)

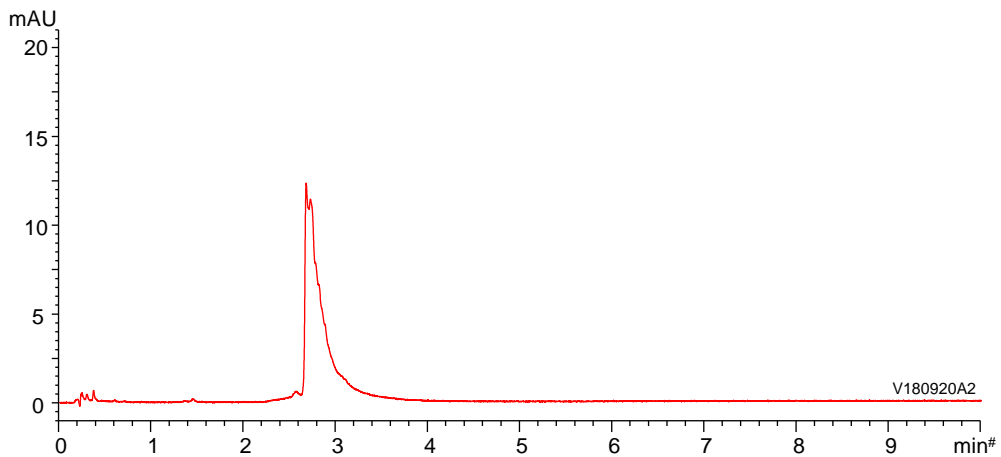
モノクローナル抗体 (アダリムマブ)
Monoclonal antibody (Adalimumab)

V180731D

Mobile phase containing 0.1% TFA



Mobile phase containing 0.1% formic acid



Column : YMC-Triart Bio C4 (1.9 μ m, 30 nm)
50 X 2.1 mmI.D.

Eluent : A) water/TFA or formic acid (100/0.1)
B) acetonitrile/TFA or formic acid (100/0.1)
25-45%B (0-10 min), 90%B (10-12.5 min)

Flow rate : 0.4 mL/min

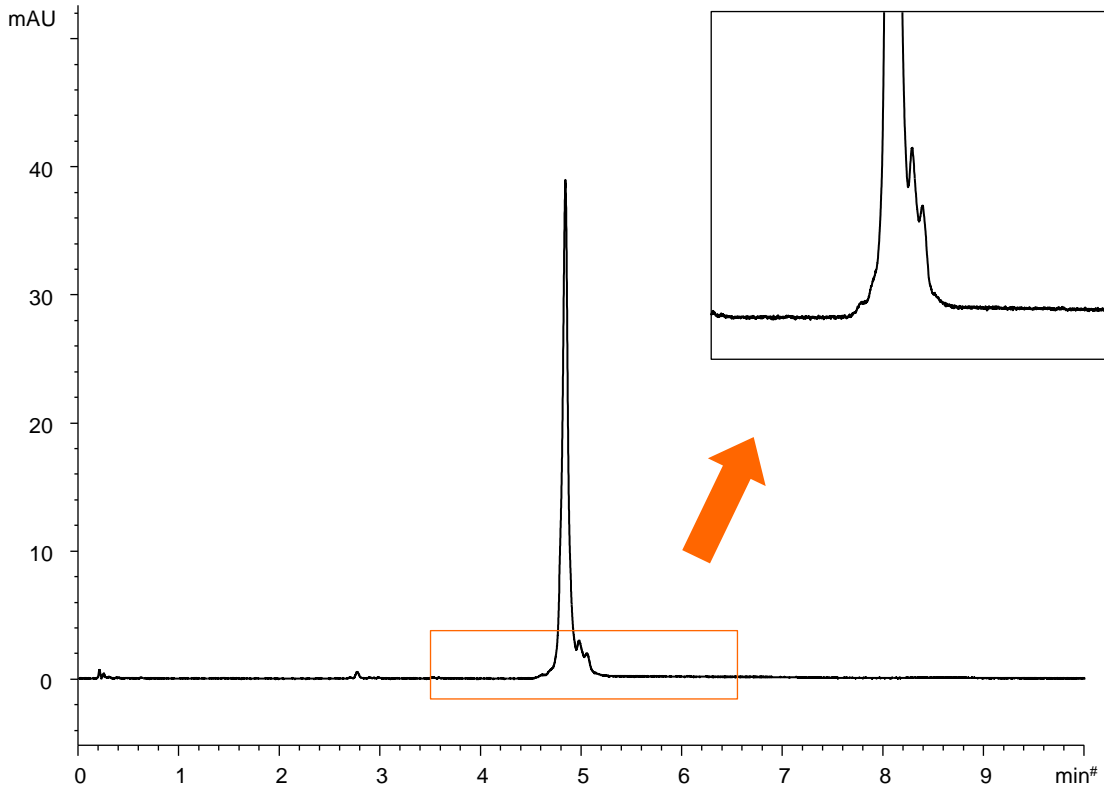
Temperature : 80°C

Detection : UV at 280 nm

Injection : 2 μ L (0.5 mg/mL)

モノクローナル抗体 (リツキシマブ)
Monoclonal antibody (Rituximab)

V181107E



Column : YMC-Triart Bio C4 (1.9 μ m, 30 nm)
50 X 2.1 mm I.D.

Eluent : A) water/TFA (100/0.1)
B) acetonitrile/TFA (100/0.1)
25-45%B (0-10 min), 90%B (10-12.5 min)

Flow rate : 0.4 mL/min

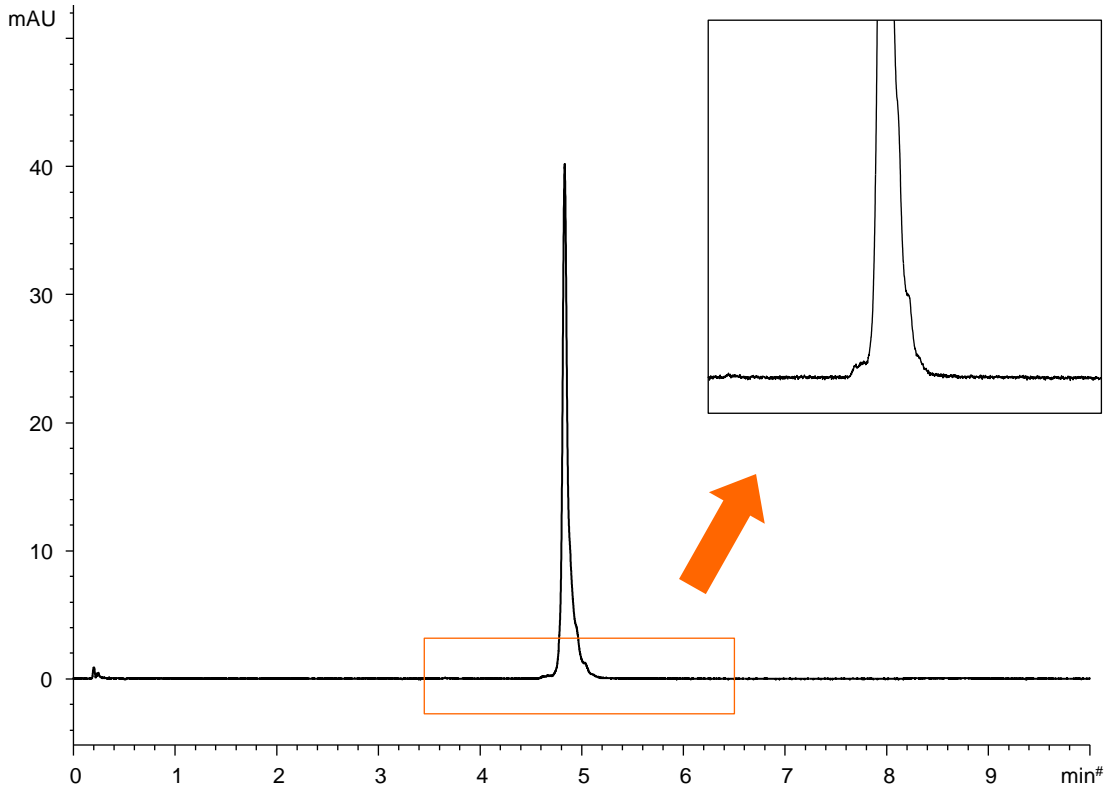
Temperature : 80°C

Detection : UV at 280 nm

Injection : 2 μ L (0.5 mg/mL)

モノクローナル抗体 (トラスツズマブ)
Monoclonal antibody (Trastuzumab)

V181107D



Column : YMC-Triart Bio C4 (1.9 μ m, 30 nm)
50 X 2.1 mm I.D.

Eluent : A) water/TFA (100/0.1)
B) acetonitrile/TFA (100/0.1)
25-45%B (0-10 min), 90%B (10-12.5 min)

Flow rate : 0.4 mL/min

Temperature : 80°C

Detection : UV at 280 nm

Injection : 2 μ L (0.5 mg/mL)