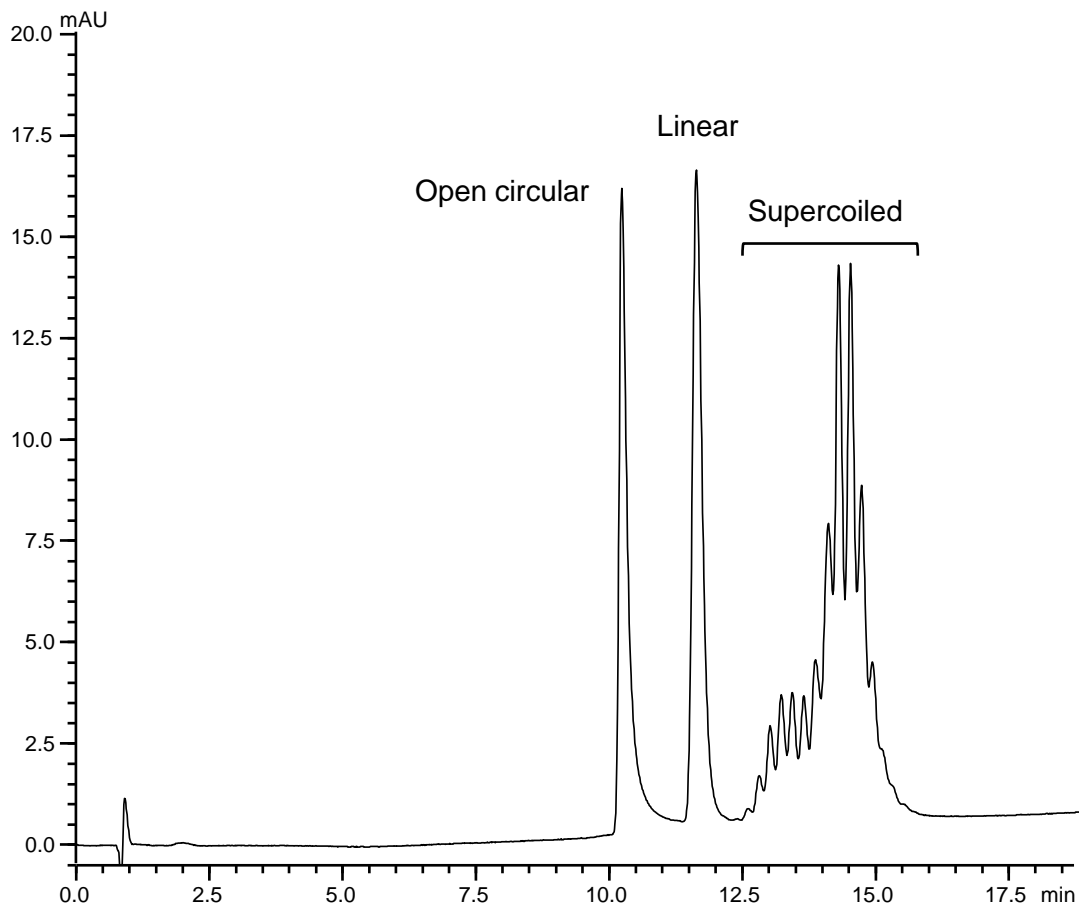


プラスミドDNA (pUC19) のアイソフォーム分離
Separation of plasmid isoforms

AA231226C



Column : BioPro HIC BF (4 μ m)
100 X 4.6 mmI.D.

Eluent : A) 50 mM NaH₂PO₄-Na₂HPO₄ containing 2.5 M (NH₄)₂SO₄ (pH 6.5)
B) 50 mM NaH₂PO₄-Na₂HPO₄ (pH 6.5)
4%B (0–1.8 min), 4-20%B (1.8–15.4 min), 20%B (15.4–18.9 min)

Flow rate : 1.0 mL/min

Temperature : 40°C

Detection : UV at 260 nm

Injection : 9 μ L

Sample : Mixture of plasmid DNA (pUC19) isoforms in 2.0 M (NH₄)₂SO₄ solution
(open circular*¹: 33 μ g/mL, linear*²: 33 μ g/mL, and supercoiled*³: 83 μ g/mL)

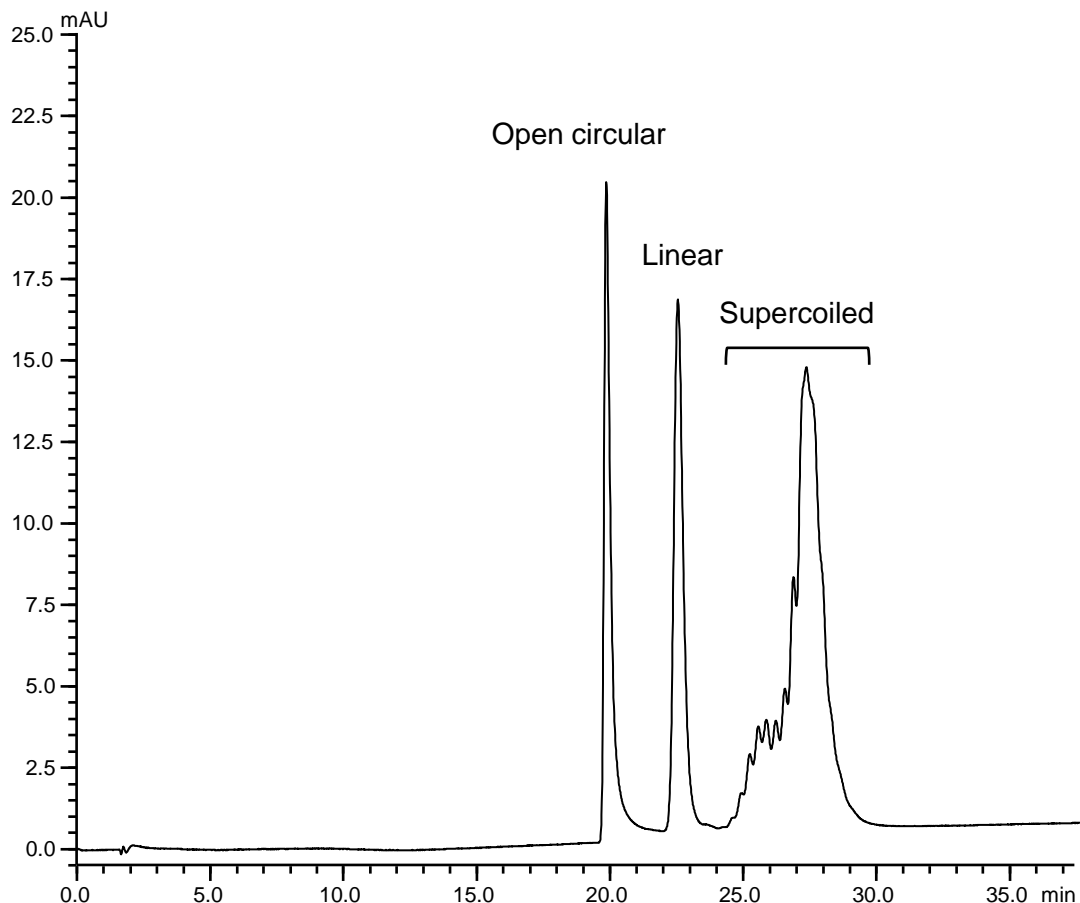
*¹ pUC19 plasmid digested with nicking endonuclease Nt.BspQI

*² pUC19 plasmid digested with restriction enzyme BamHI

*³ pUC19 plasmid extracted from *E. coli* (2686 bp)

プラスミドDNA (pUC19) のアイソフォーム分離
Separation of plasmid isoforms

AA231227F



Column : BioPro HIC BF (4 μ m)
100 X 4.6 mmI.D.

Eluent : A) 50 mM Tris-HCl containing 2.5 M $(\text{NH}_4)_2\text{SO}_4$ (pH 7.5)
B) 50 mM Tris-HCl (pH 7.5)
4%B (0–3.5 min), 4-20%B (3.5–30.7 min), 20%B (30.7–37.7 min)

Flow rate : 0.5 mL/min

Temperature : 25°C

Detection : UV at 260 nm

Injection : 9 μ L

Sample : Mixture of plasmid DNA (pUC19) isoforms in 2.0 M $(\text{NH}_4)_2\text{SO}_4$ solution
(open circular*1: 33 μ g/mL, linear*2: 33 μ g/mL, and supercoiled*3: 83 μ g/mL)

*1 pUC19 plasmid digested with nicking endonuclease Nt.BspQI

*2 pUC19 plasmid digested with restriction enzyme BamHI

*3 pUC19 plasmid extracted from *E. coli* (2686 bp)