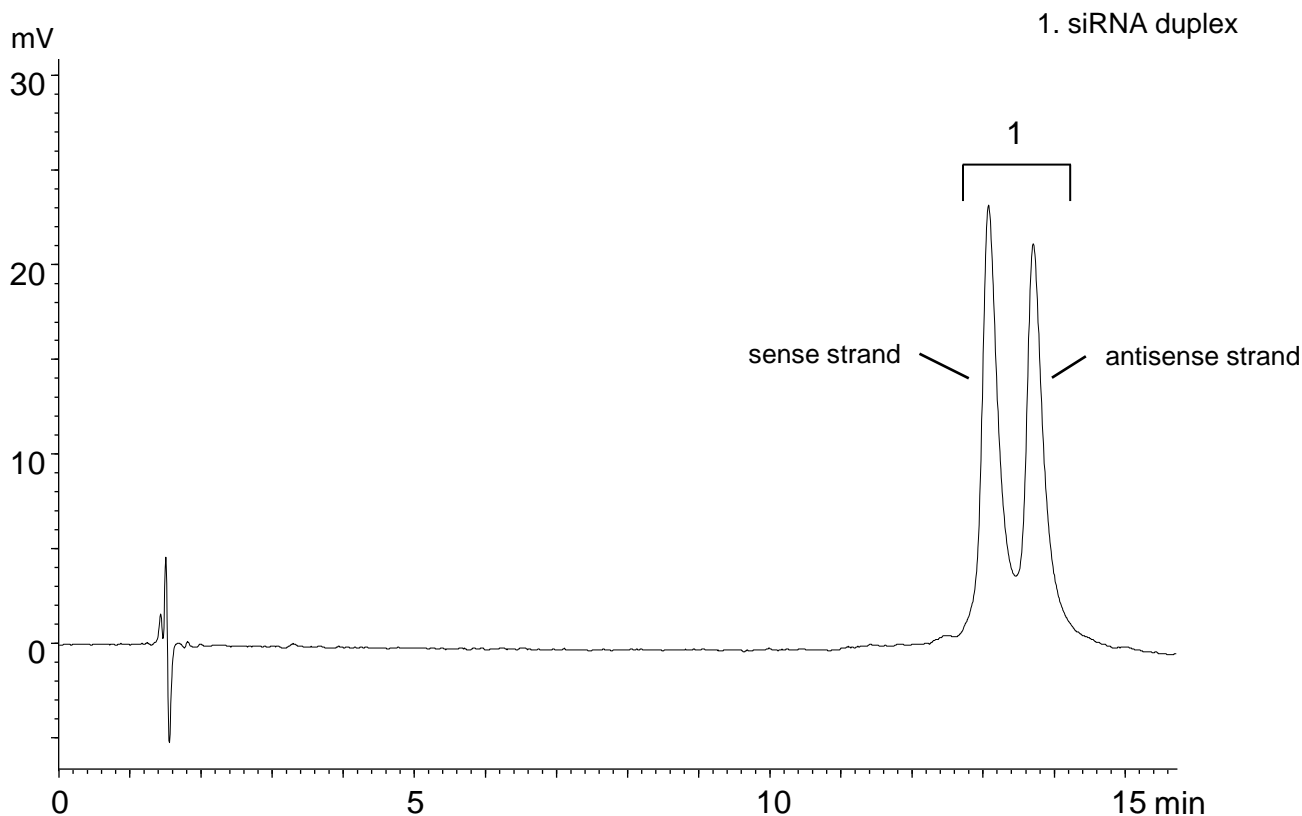


siRNA duplex under denaturing condition (high temperature)

D240509C

siRNA

5'-CGU ACG CGG AAU ACU UCG AdTdT-3' sense strand
3'-dTdTGCA UGC GCC UUA UGA AGC U-5' antisense strand



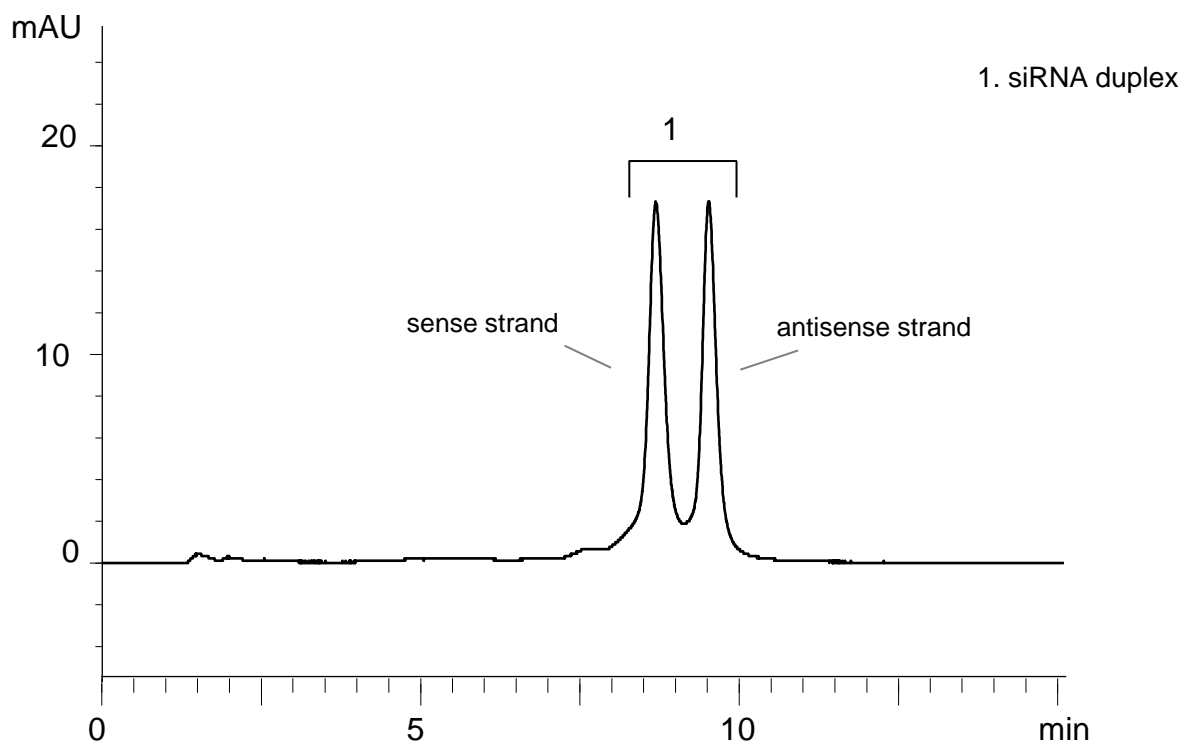
Column : Accura BioPro IEX QF (5 μ m), 100 X 4.6 mm I.D.
 Eluent : A) 50 mM Glycine-NaOH (pH 10.0)
 B) 50 mM Glycine-NaOH (pH 10.0) containing 1.0 M NaCl
 60-90%B (0-15 min)
 Flow rate : 0.5 mL/min
 Temperature : 80°C
 Detection : UV at 260 nm
 Injection : 4 μ L (5 nmol/mL)

siRNA duplex under denaturing condition (high pH)

P230418A02

siRNA

5'-CGU ACG CGG AAU ACU UCG AdTdT-3' sense strand
3'-dTdTGCA UGC GCC UUA UGA AGC U-5' antisense strand



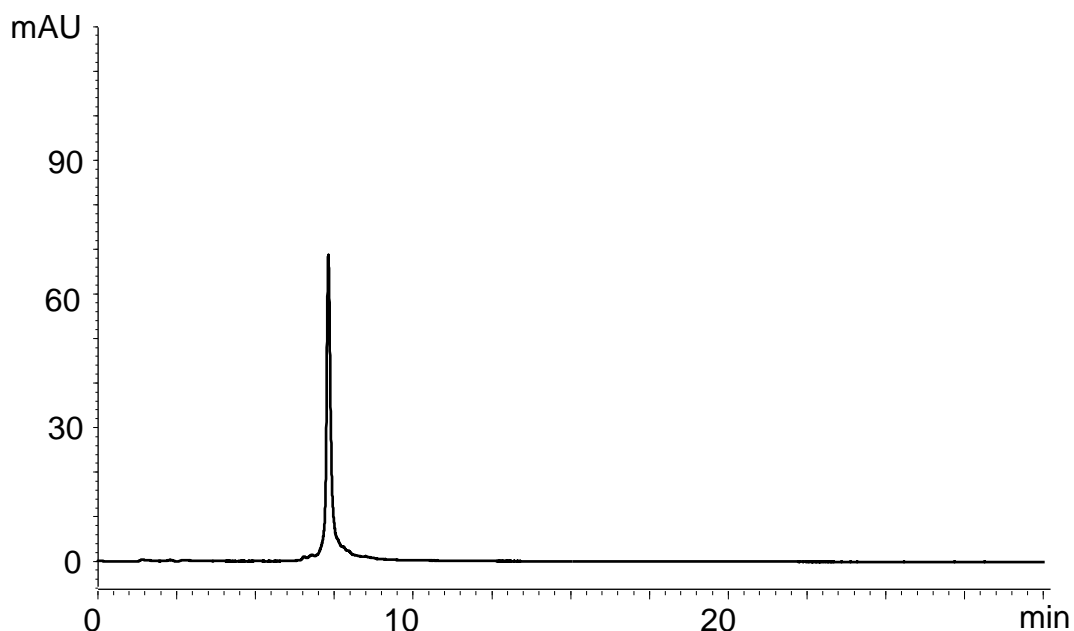
Column	: BioPro IEX QF (5 μ m) 100 X 4.6 mm I.D.
Eluent	: A) 10 mM NaOH B) 10 mM NaOH containing 1.0 M NaClO ₄ 33-38%B (0-10 min)
Flow rate	: 0.5 mL/min
Temperature	: 25°C
Detection	: UV at 260 nm
Injection	: 4 μ L (5 nmol/mL)

siRNA duplex under non-denaturing condition

P221202D03

siRNA

5'-CGU ACG CGG AAU ACU UCG AdTdT-3'
3'-dTdTGCA UGC GCC UUA UGA AGC U-5'



Column	: BioPro IEX QF (5 μ m) 100 X 4.6 mmI.D.
Eluent	: A) 20 mM Tris-HCl (pH 8.1) B) 20 mM Tris-HCl (pH 8.1) containing 1.0 M NaClO ₄ 25-40%B (0-30 min)
Flow rate	: 0.5 mL/min
Temperature	: 25°C
Detection	: UV at 260 nm
Injection	: 4 μ L (5 nmol/mL)