

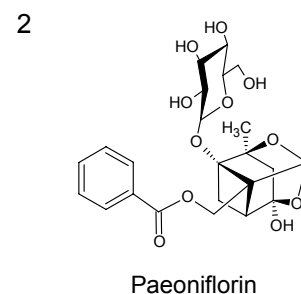
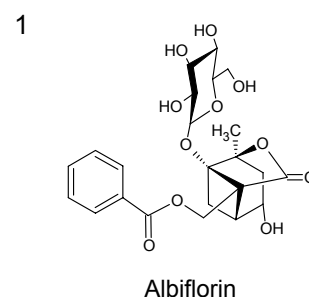
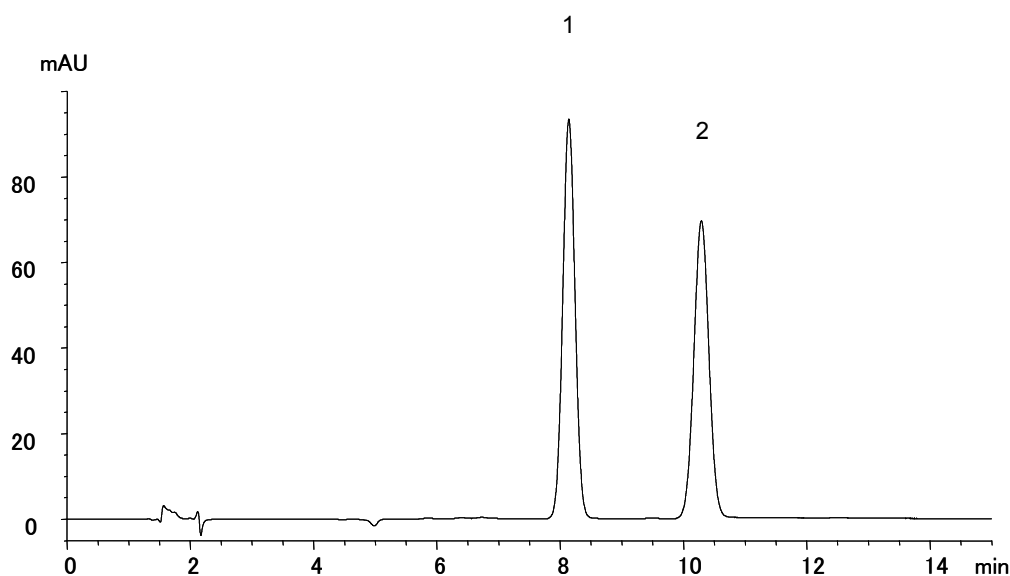
ペオニフロリン (日本薬局方 16 改正記載条件)
Paeoniflorin (The Japanese Pharmacopoeia 16th)

B111003D

System suitability solution

(0.1 mg/mL Albiflorin, 0.1 mg/mL Paeoniflorin)

	System suitability requirement	result
Resolution (1, 2)	≥ 2.5	5.2



Column : YMC-Triart C18 (5 μ m, 12 nm)
150 X 4.6 mm I.D.

Eluent : water/acetonitrile/phosphoric acid (850/150/1)

Flow rate : 1.1 mL/min (*adjust the flow rate so that the retention time of paeoniflorin is about 10 min*)

Temperature : 20°C

Detection : UV at 232 nm

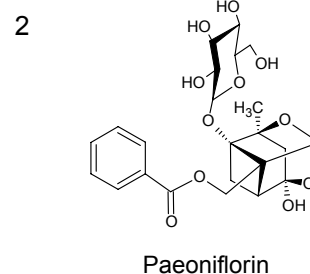
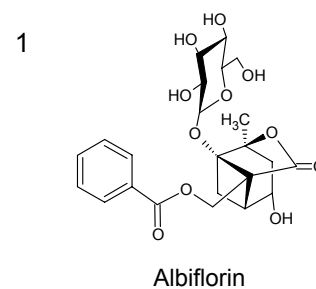
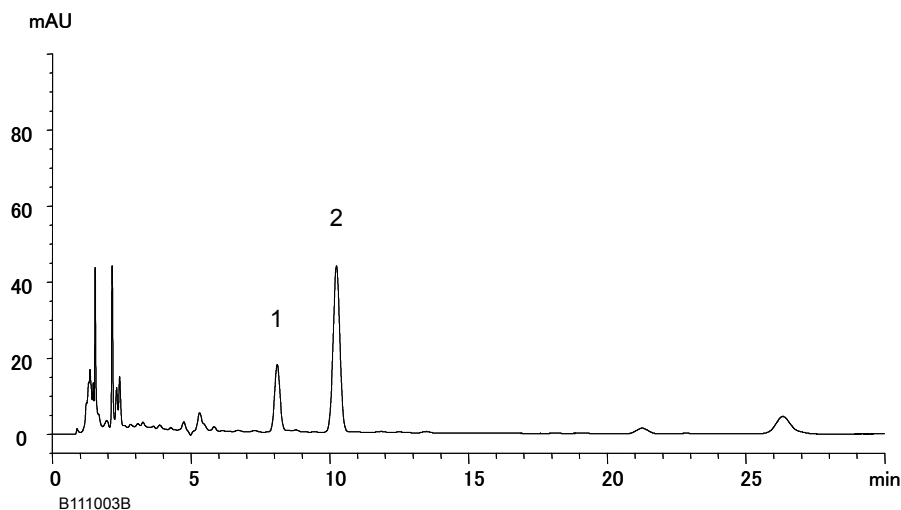
Injection : 10 μ L

[The Japanese Pharmacopoeia 16th; "Syakuyaku (Peony Root)", Assay]

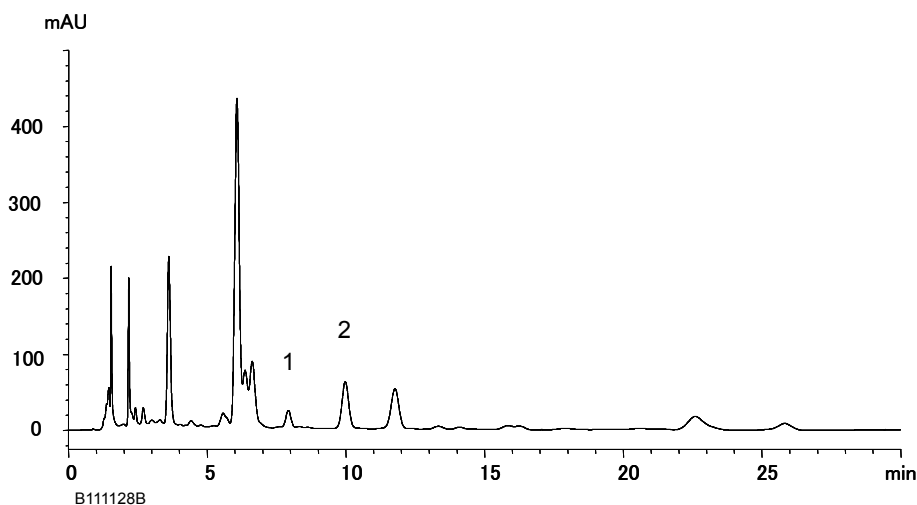
漢方製剤中のペオニフロリン
Paeoniflorin in Kampo products

B111219A

A) Toki-shakuyaku-san extract granules



B) Kakkonto extract granules



Column	: YMC-Triart C18 (5 μm, 12 nm) 150 X 4.6 mm I.D.
Eluent	: water/acetonitrile/phosphoric acid (850/150/1)
Flow rate	: 1.1 mL/min (<i>adjust the flow rate so that the retention time of paeoniflorin is about 10 min</i>)
Temperature	: 20°C
Detection	: UV at 232 nm
Injection	: 10 μL
Sample	: A) 50% methanol extract of a commercially available Toki-shakuyaku-san extract granules (10 mg/mL) B) 50% methanol extract of a commercially available Kakkonto extract granules (10 mg/mL)

[The Japanese Pharmacopoeia 16th; "Syakuyaku (Peony Root)", Assay]