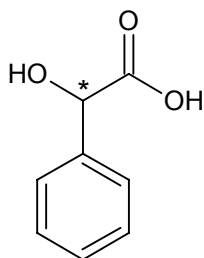
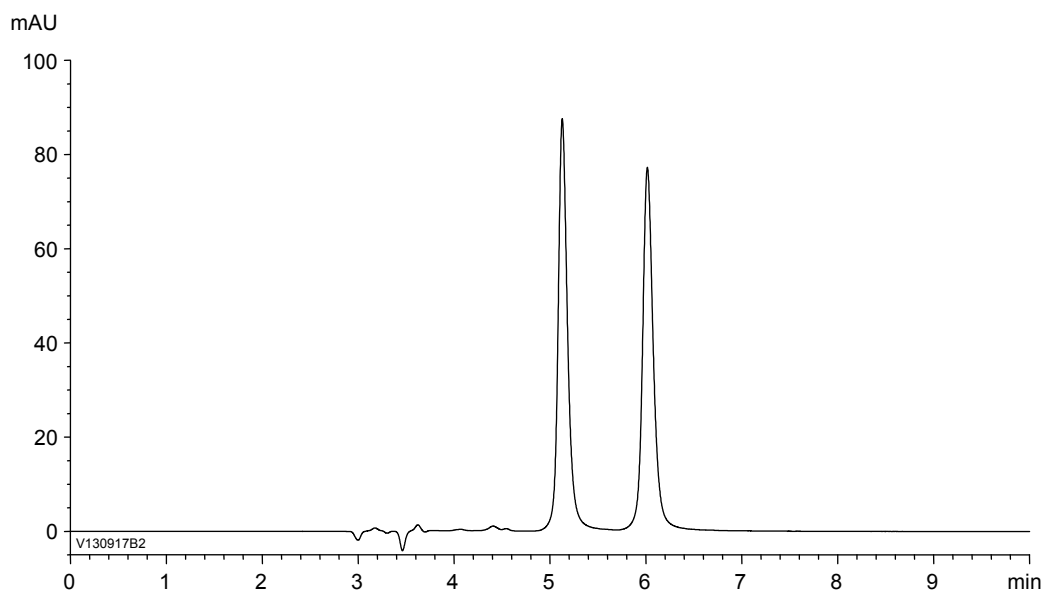


DL-マンデル酸
DL-Mandelic acid

V130917B



α	1.4
Rs	5.1



Column : CHIRAL ART Cellulose-C (5 μ m)
250 X 4.6 mm I.D.

Eluent : *n*-hexane/2-propanol/TFA (80/20/0.1)

Flow rate : 1.0 mL/min

Temperature : 25°C

Detection : UV at 254 nm

Injection : 20 μ L (1 mg/mL)