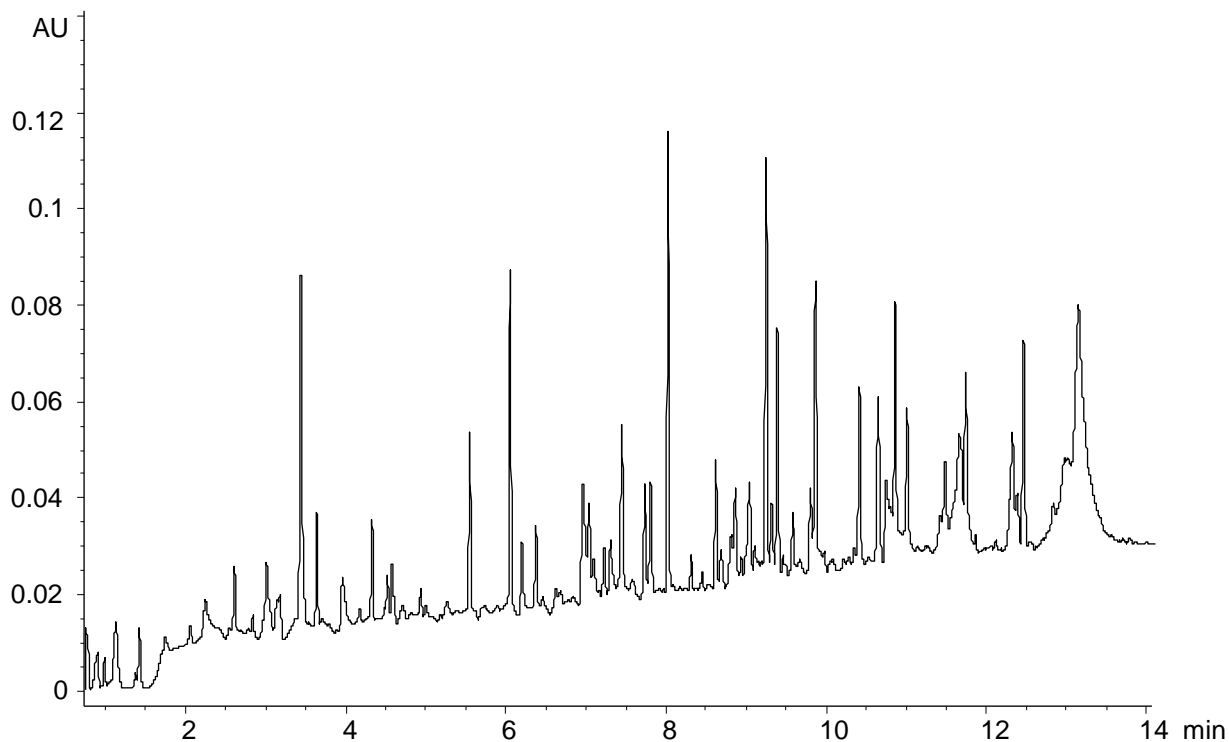


モノクローナル抗体のペプチドマッピング  
Peptide mapping of monoclonal antibody

U200609A



Column : YMC-Triart C18 (1.9  $\mu$ m, 12 nm)  
100 X 2.0 mm I.D.

Eluent : A) water/TFA (100/0.1)  
B) acetonitrile/TFA (100/0.1)  
2%B (0-0.67 min), 2-45%B (0.67-14 min)

Flow rate : 0.6 mL/min

Temperature : 40°C

Detection : UV at 215 nm

Injection : 10  $\mu$ L

Sample : Tryptic digest of monoclonal antibody