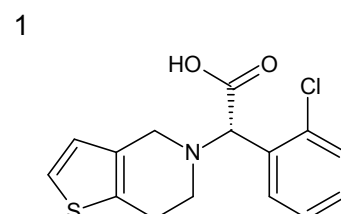
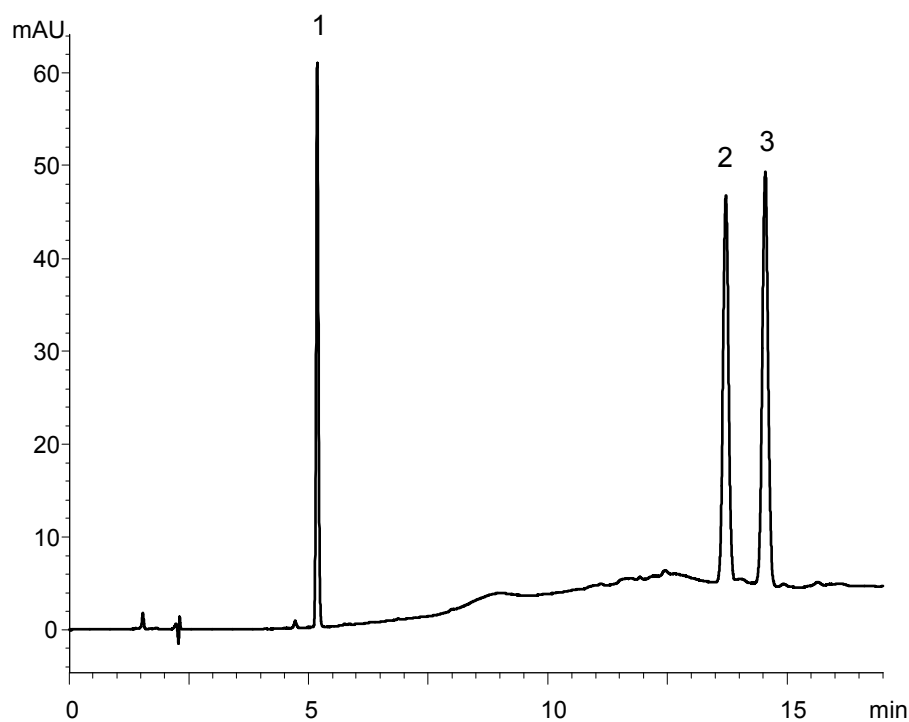
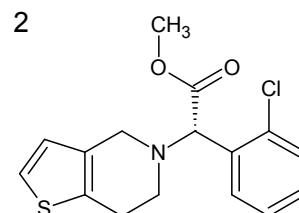


クロピドグレル及び関連化合物
Clopidogrel and related compounds

U120517E

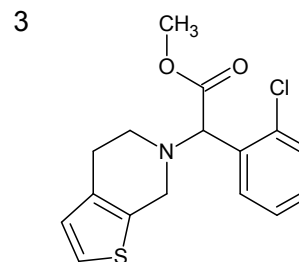


Clopidogrel carboxylic acid



• H₂SO₄

Clopidogrel sulphate



• HCl

Clopidogrel related compound B

Column	: YMC-Triart C18 (5 μm, 12 nm) 150 X 4.0 mmI.D.
Eluent	: A) 20 mM KH ₂ PO ₄ -H ₃ PO ₄ (pH 2.5) B) acetonitrile 20-70%B (0-10 min), 70%B (10-17 min)
Flow rate	: 0.75 mL/min
Temperature	: 25°C
Detection	: UV at 220 nm
Injection	: 8 μL (10~20 μg/mL)