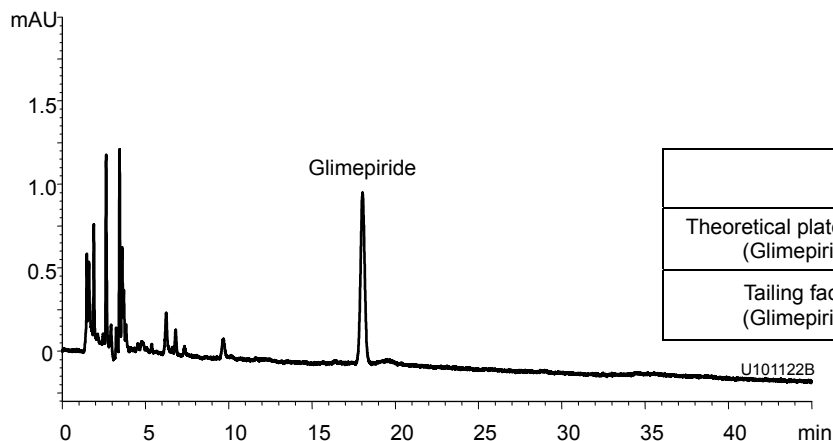


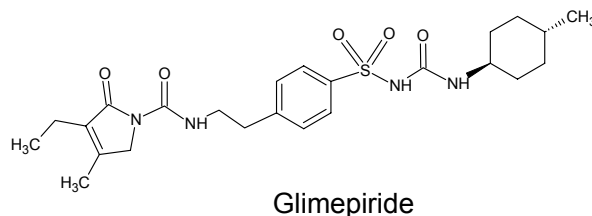
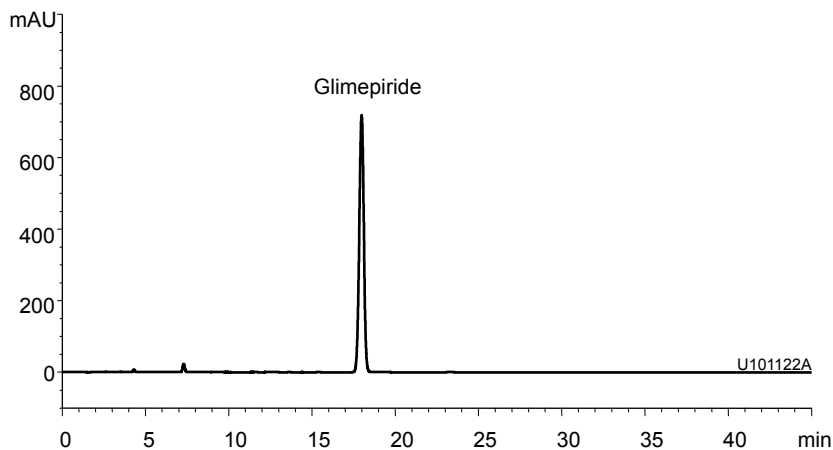
グリメピリド
Glimepiride

U101124A

A) Standard solution*
(0.0002 mg/mL Glimepiride)



B) Sample solution*
(0.2 mg/mL Glimepiride)



Column : J'sphere ODS-M80 (4 μ m, 8 nm)
250 X 4.0 mmI.D.

Eluent : phosphate buffer (pH 2.5)/acetonitrile (50/50)
phosphate buffer : dissolve 0.5 g of NaH₂PO₄ in 500 mL water and adjust pH 2.5 with H₃PO₄

Flow rate : 1.0 mL/min

Temperature : 25°C

Detection : UV at 228 nm

Injection : 20 μ L

(The draft for the Japanese Pharmacopoeia; Related substances)

* All standard and sample solutions were prepared from Glimepiride supplied as a reagent for laboratory use.