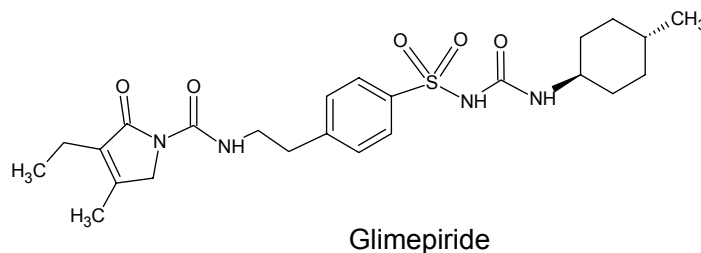
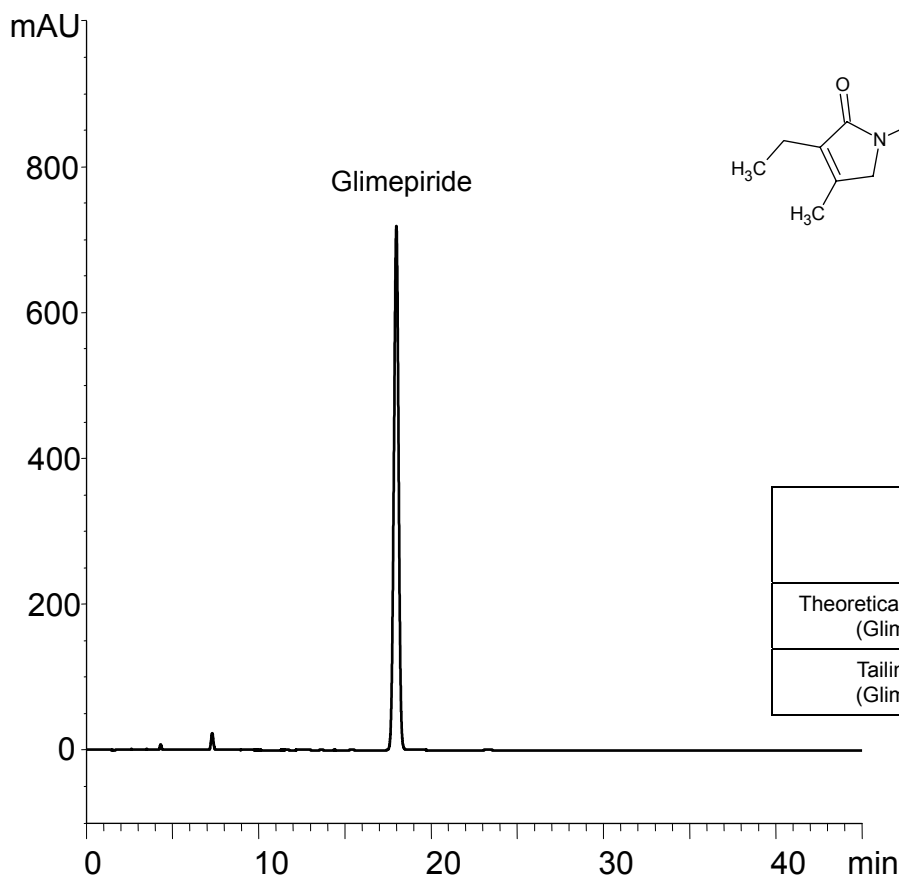


グリメピリド

Glimepiride

U101122A



	System suitability requirement (JP)	result
Theoretical plate number (Glimepiride)	$\geq 9000$	20400
Tailing factor (Glimepiride)	$\leq 1.5$	0.98

Column : J'sphere ODS-M80 (4  $\mu$ m, 8 nm)  
250 X 4.0 mmI.D.

Eluent : phosphate buffer (pH 2.5)/acetonitrile (50/50)  
*phosphate buffer : dissolve 0.5 g of NaH<sub>2</sub>PO<sub>4</sub> in 500 mL water and adjust pH 2.5 with H<sub>3</sub>PO<sub>4</sub>*

Flow rate : 1.0 mL/min

Temperature : 25°C

Detection : UV at 228 nm

Injection : 20  $\mu$ L

Sample : Glimepiride\* (0.2 mg/mL, correspond to standard and sample solution)

(The draft for the Japanese Pharmacopoeia; Assay, The United States Pharmacopoeia 34th; Assay, The European Pharmacopoeia 7th; Assay)

\* A reagent for laboratory use