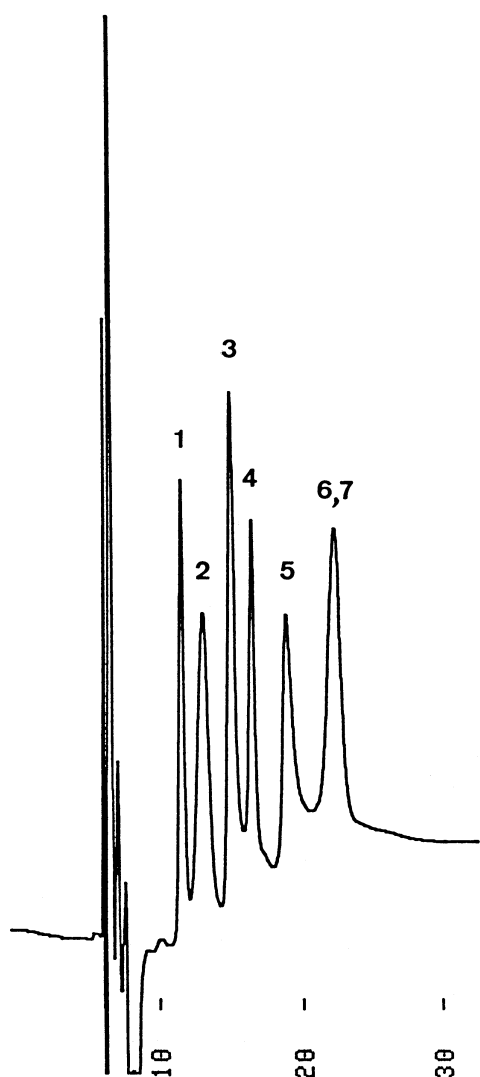


単糖類  
Monosaccharides

T910718D



- 1.Rhamnose
- 2.Fucose
- 3.Xylose
- 4.Fructose
- 5.Mannose
- 6.Glucose
- 7.Galactose

Column : YMC-Pack Polyamine II  
250 × 4.6 mm I.D. × 2

Eluent : ethanol/ethyl acetate/acetonitrile/water (30/30/23/17)

Flow rate : 1.0 mL/min

Temperature : 26 °C

Detection : RI, 16 × 10<sup>-6</sup> RIU/FS

Injection : 25 μL (0.65~115.6 mg/mL)