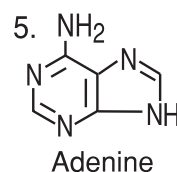
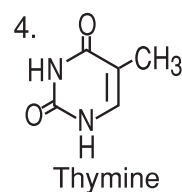
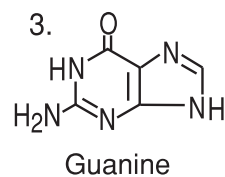
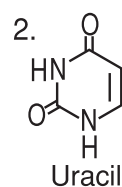
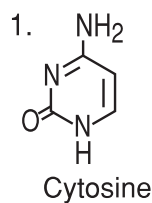
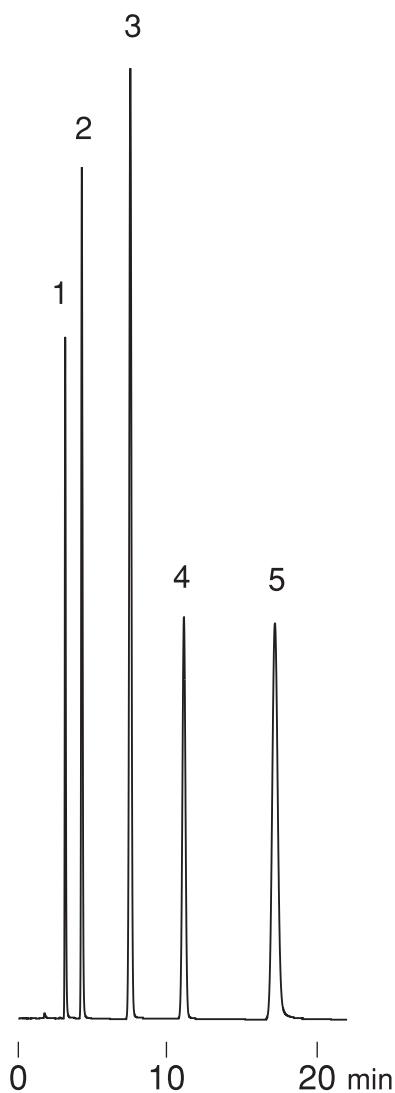


核酸塩基

Nucleic acid bases

S991029A



Column : Hydrosphere C18 (5 μ m, 12nm)
150 \times 4.6 mm I.D.
Eluent : 20mM KH₂PO₄ - K₂HPO₄ (pH 6.9)
Flow rate : 1.0 mL/min
Temperature : 37 $^{\circ}$ C
Detection : UV at 254 nm, 0.064 AUFS
Injection : 8 μ L (0.01~0.02 mg/mL)