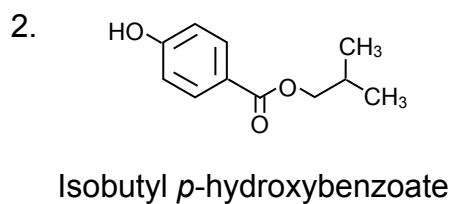
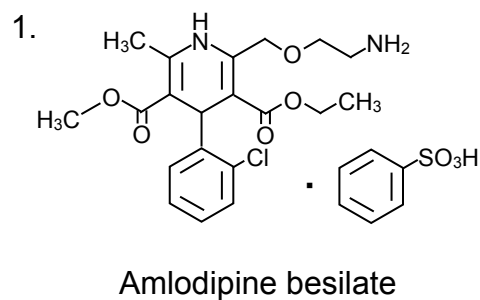
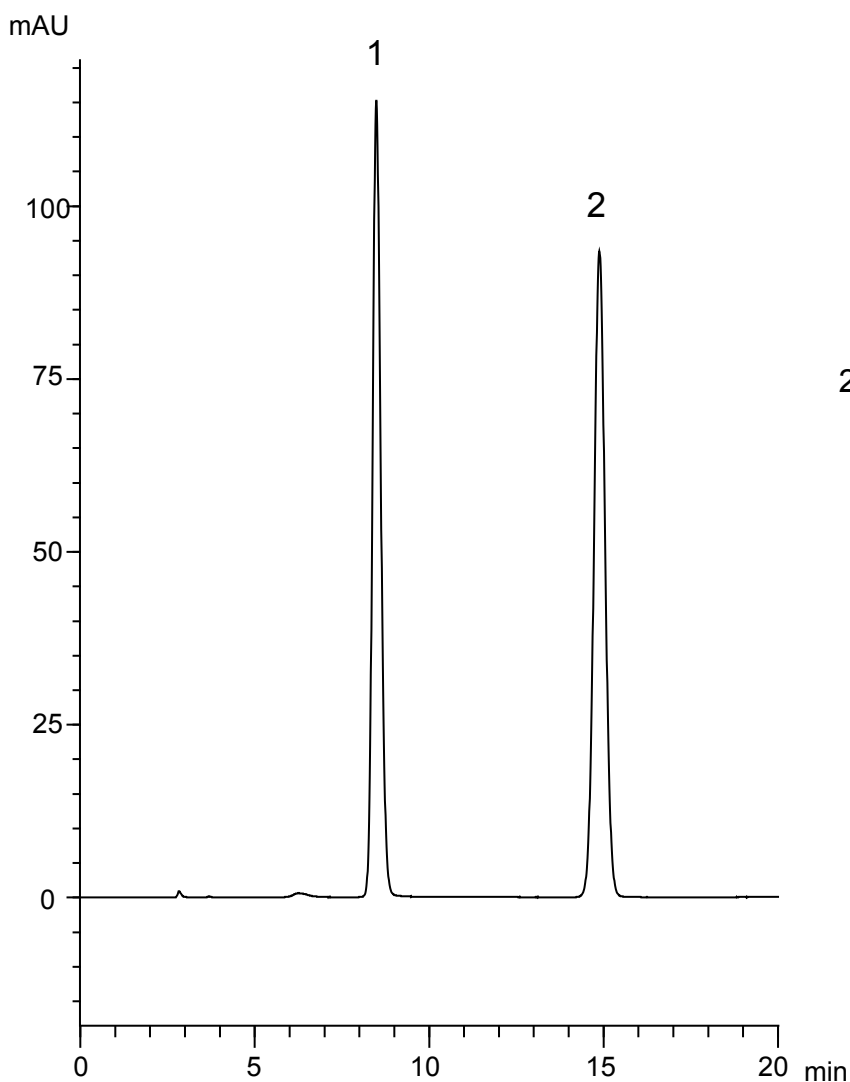


アムロジピンベシル酸塩 (第十五改正日本薬局方第一追補記載条件)
Amlodipine besilate (The Japanese Pharmacopoeia 15th Edition Supplement I) R100127C



Column : YMC-Triart C18 (5 μ m, 12 nm)
150 X 4.6 mmI.D.
Eluent : methanol/ KH₂PO₄aq*(65/35)
※ Dissolve 4.1 g of KH₂PO₄ in water to make 1000 mL
Flow rate : 0.6 mL/min
Temperature : 25°C
Detection : UV at 237 nm
Injection : 20 μ L (28, 30 μ g/mL)

(第十五改正日本薬局方第一追補記載条件；定量法)