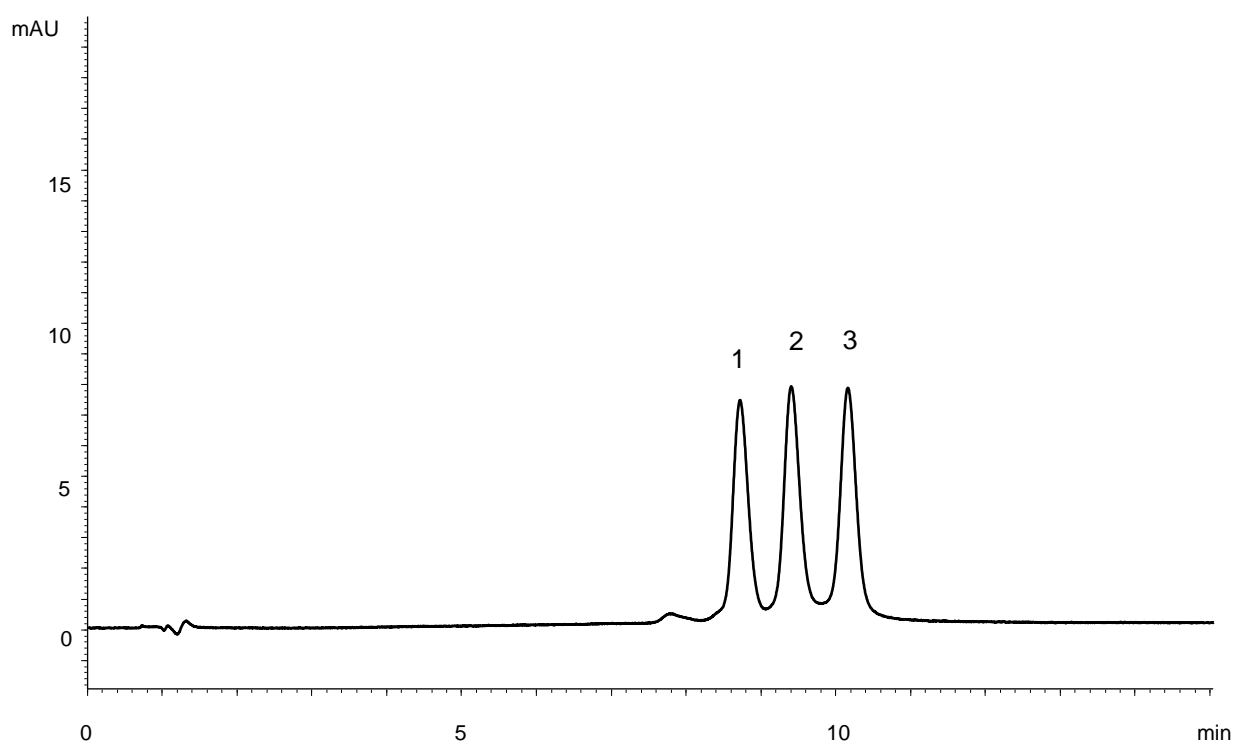


ホスホロチオエート型オリゴヌクレオチド
Phosphorothioate oligonucleotides

P180606C

1. 5'-T[^]AT[^]AT[^]AT[^]AT[^]AT[^]AT[^]AT[^]AT[^]AT[^]AT[^]AT[^]AT[^]AT[^]TTT-3' (DNA 15 mer 12PS, 2PO)
2. 5'-T[^]AT[^]AT[^]AT[^]AT[^]AT[^]AT[^]AT[^]AT[^]AT[^]AT[^]AT[^]AT[^]AT[^]TT-3' (DNA 15 mer 13PS, 1PO)
3. 5'-T[^]AT[^]AT[^]AT[^]AT[^]AT[^]AT[^]AT[^]AT[^]AT[^]AT[^]AT[^]AT[^]AT[^]T-3' (DNA 15 mer All PS)

^=Phosphorothioated



Column	: BioPro IEX QF (5 μm) 100 X 4.6 mm I.D.
Eluent	: A) 10 mM NaOH B) 10 mM NaOH containing 1.0 M NaClO ₄ 40-70%B (0-15 min)
Flow rate	: 1.0 mL/min
Temperature	: 25°C
Detection	: UV at 260 nm
Injection	: 6 μL (each 3.3 nmol/mL)