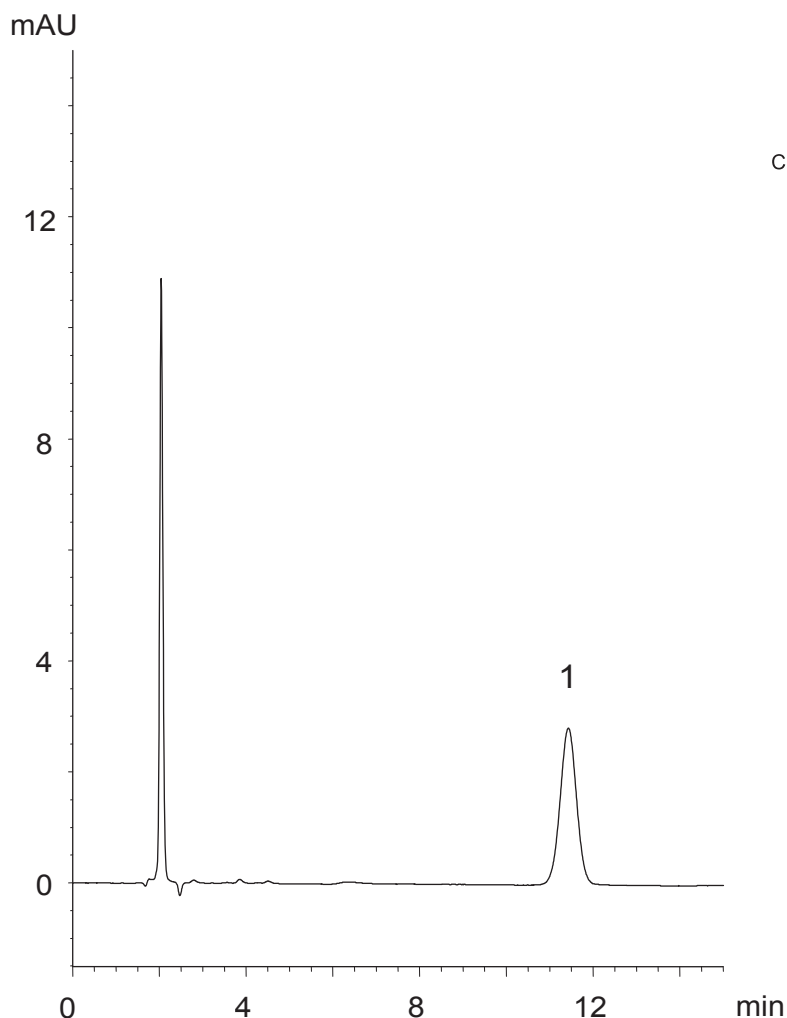
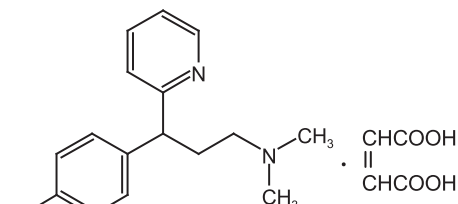


クロルフェニラミンマレイン酸塩 (日本薬局方15改正分析条件)
Chlorpheniramine maleate (Japanese Pharmacopoeia vol. 15)

P061023A



1.



Chlorpheniramine maleate

Column : YMC-Pack ODS-A (10 μ m, 12 nm)
300 x 4.0 mm I.D.
Eluent : phosphate buffer (pH 2.8)* / acetonitrile (80/20)
* Dissolve 8.57 g of $\text{NH}_4\text{H}_2\text{PO}_4$ and 1 mL of H_3PO_4 in 1000 mL water
Flow rate : 1.3 mL/min
(adjust the flow rate so that the retention time of chlorpheniramine maleate is about 11 min)
Temperature : 25 $^\circ\text{C}$
Detection : UV at 225 nm
Injection : 20 μL (0.003 mg/mL)