

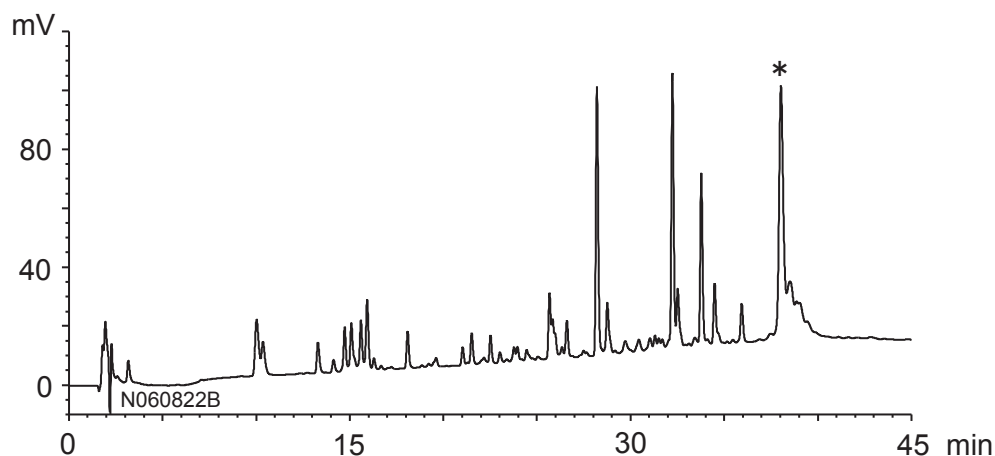
YMC HPLC DATA SHEET

ペプチドマッピング - 粒子間の優れた再現性

Peptide mapping - excellent reproducibility between 5 μ m and 2 μ m

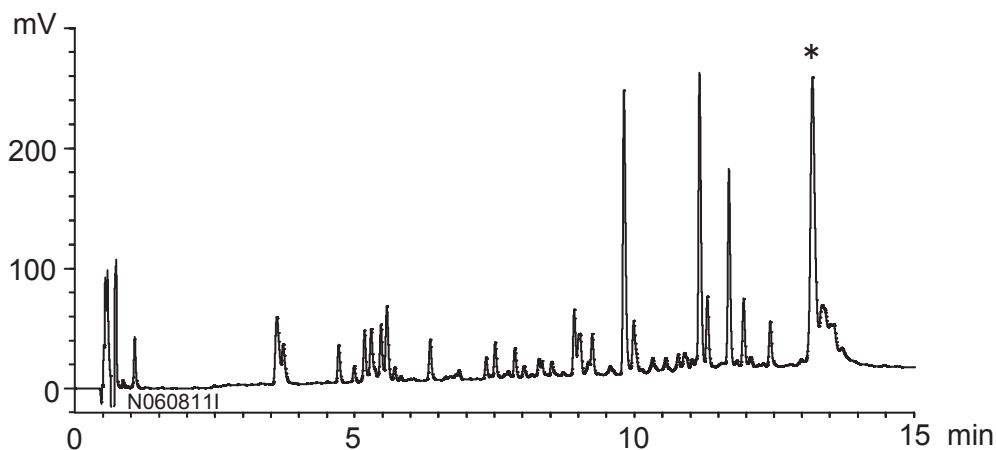
N070629E

YMC-Pack *Pro* C18 (5 μ m, 12 nm)
150 X 2.0 mm I.D.



0%B (0-5 min)
0-100%B (5-40 min)
100%B (40-45 min)

YMC-UltraHT *Pro* C18 (2 μ m, 12 nm)
50 X 2.0 mm I.D.



0%B (0-1.65 min)
0-100%B (1.65-13.35 min)
100%B (13.35-15 min)

* undigested Cytochrome *c*

Eluent	: A) acetonitrile / water / TFA (10/90/0.1) B) acetonitrile / water / TFA (35/65/0.1)
Flow rate	: 0.2 mL/min
Temperature	: 37°C
Detection	: UV at 220 nm
Injection	: 1 μ L
Sample	: Tryptic digest of Cytochrome <i>c</i>