

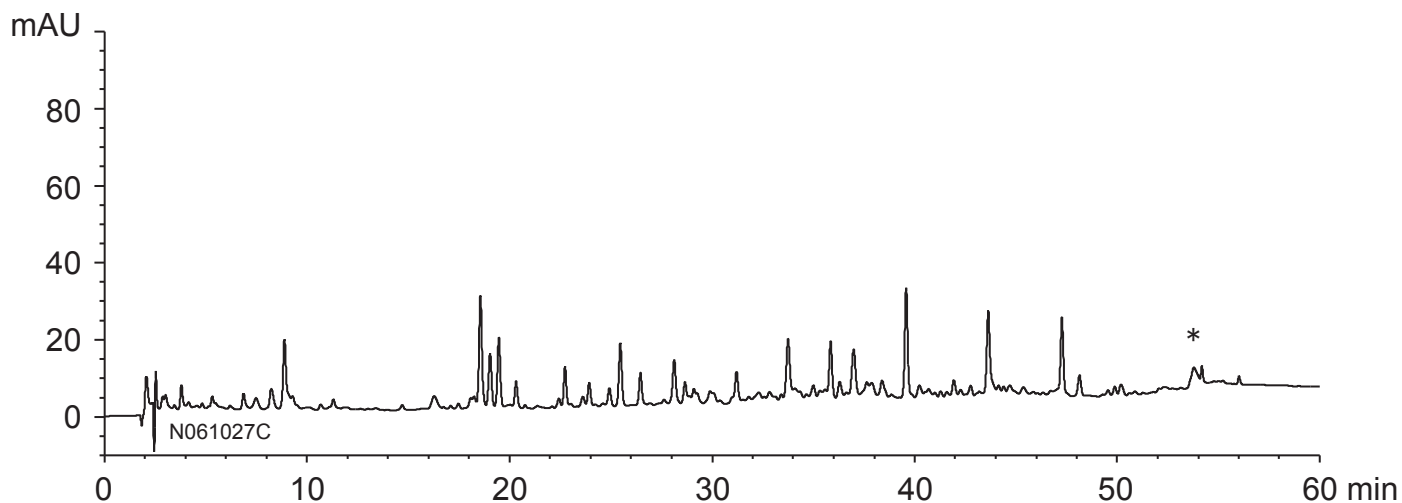
YMC HPLC DATA SHEET

ペプチドマッピング

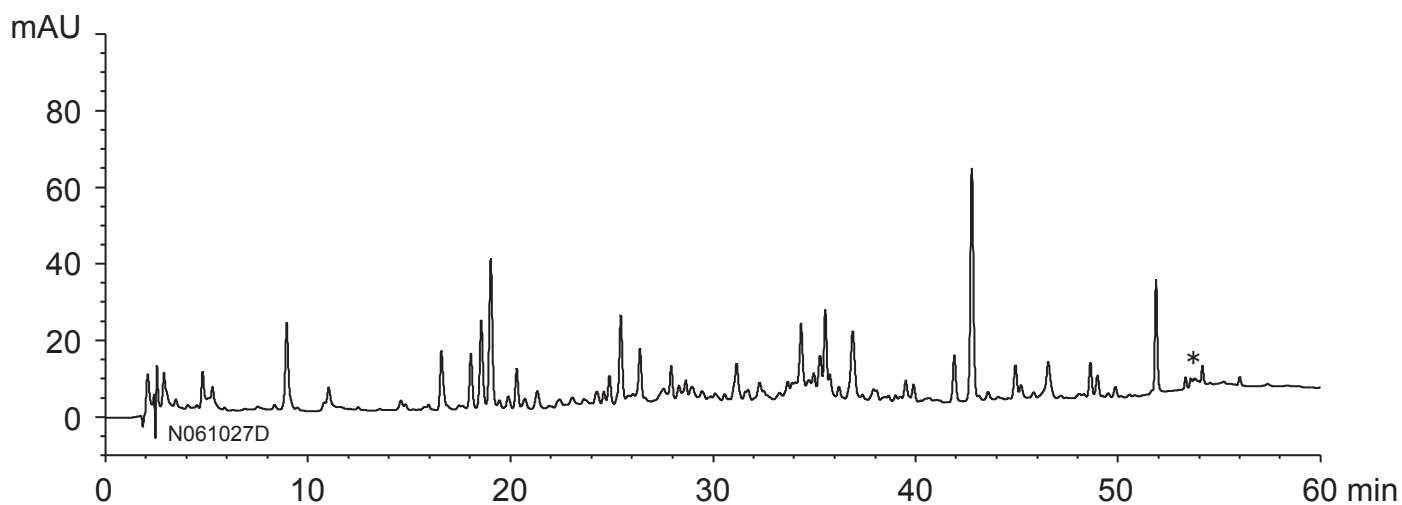
Peptide mapping

N070629D

Tryptic digest of BSA



Lysyl endopeptidase digest of BSA



* undigested BSA

| | |
|-------------|---|
| Column | : YMCbasic (5 μ m) 150 X 2.0 mmI.D. |
| Eluent | : A) water / TFA (100/0.1) B) acetonitrile / TFA (100/0.1) 5-35%B (0-50 min), 35-45%B (50-55 min), 45%B (55-60 min) |
| Flow rate | : 0.2 mL/min |
| Temperature | : 37°C |
| Detection | : UV at 220 nm |
| Injection | : 1 μ L |