

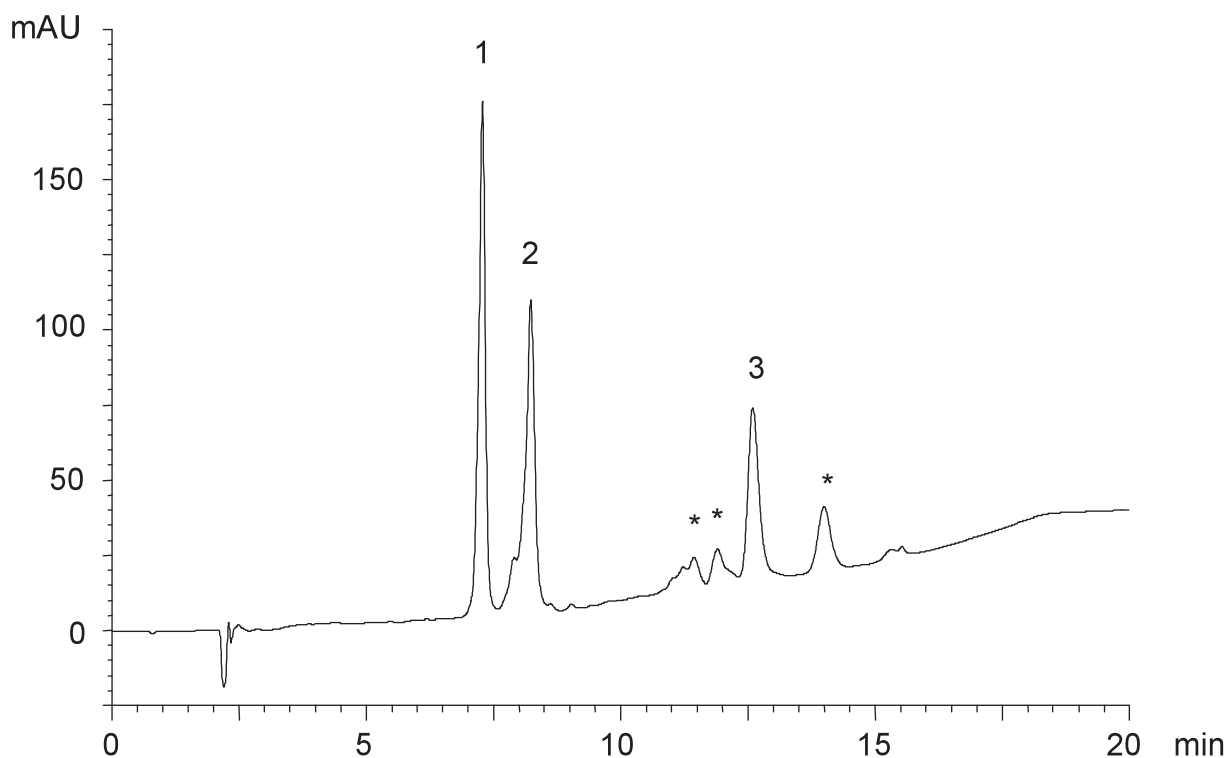
タンパク質(MW 66,000 - 96,000)

Proteins(MW 66,000 - 96,000)

N040930G

- | | |
|-----------------------------------|-------------|
| 1. BSA | (MW 66,000) |
| 2. Conalbumin (Chicken egg white) | (MW 77,000) |
| 3. Lipoxidase (Soybean) | (MW 96,000) |

* Impurities in commercial lipoxidase



Column : YMC-Pack C4 (5 μ m, 30nm)
150 \times 4.6 mm I.D.

Eluent : A)water/TFA (100/0.1)
B)acetonitrile/2-propanol/TFA (50/50/0.1)
30-75%B (0-15min),75%B (15-20min)

Flow rate : 1.0 mL/min

Temperature : 37 $^{\circ}$ C

Detection : UV at 220 nm

Injection : 10 μ L (0.25~1.0 mg/mL)