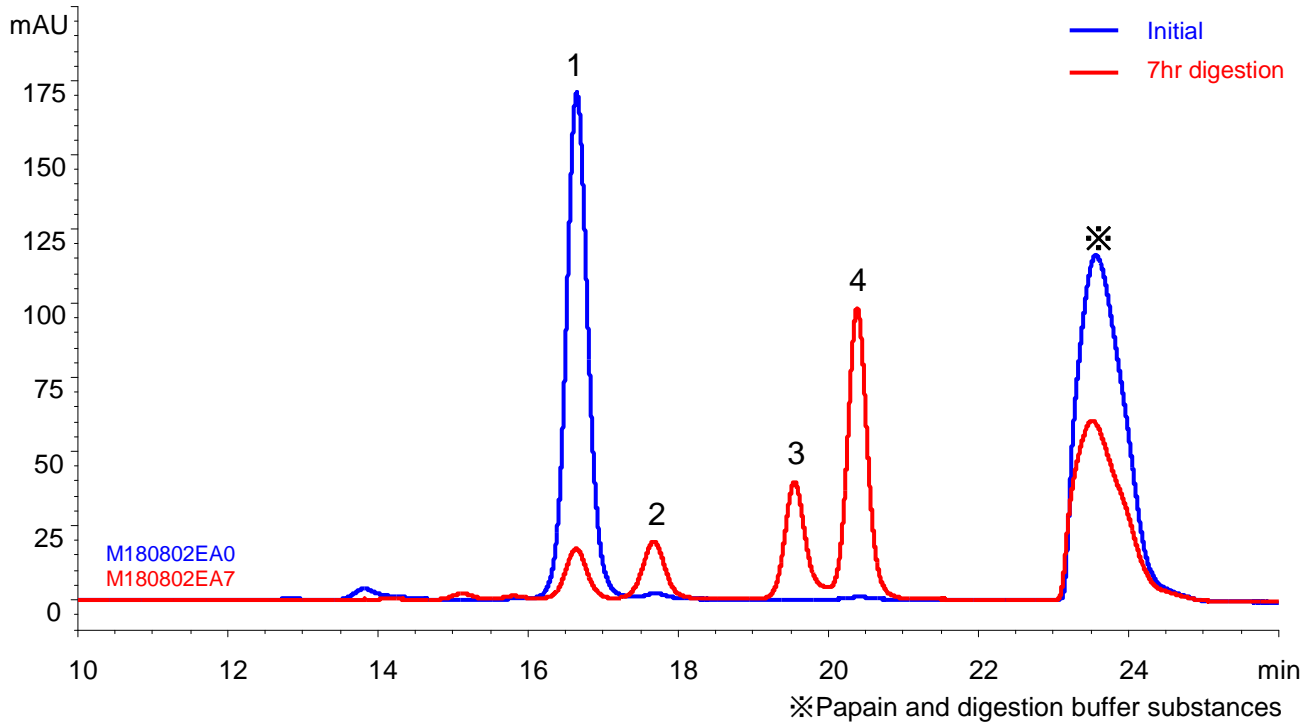
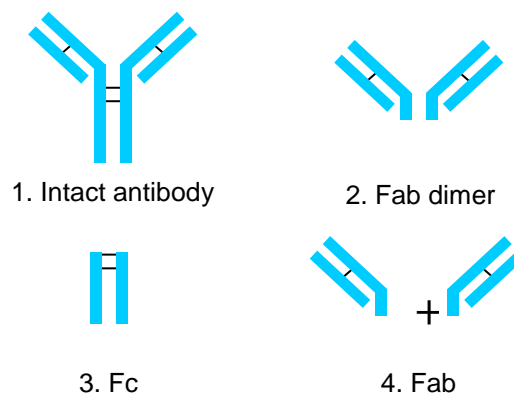
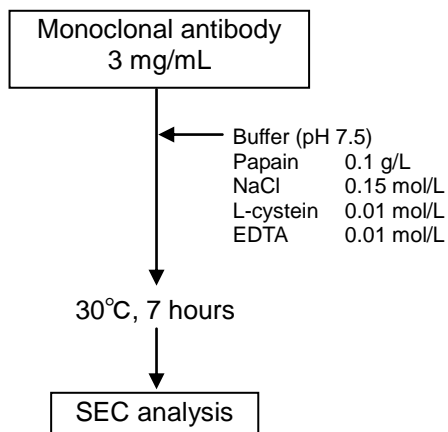


モノクローナル抗体のパパイン消化断片  
Monoclonal antibody fragments

M180802EA



**Method of papain digestion**



Column	: YMC-SEC MAB (3 μm, 25 nm) 300 X 4.6 mm I.D.
Eluent	: 0.1 M KH <sub>2</sub> PO <sub>4</sub> -K <sub>2</sub> HPO <sub>4</sub> (pH 7.0) containing 0.2 M NaCl
Flow rate	: 0.165 mL/min
Temperature	: 25°C
Detection	: UV at 280 nm
Injection	: 2 μL (3 mg/mL)