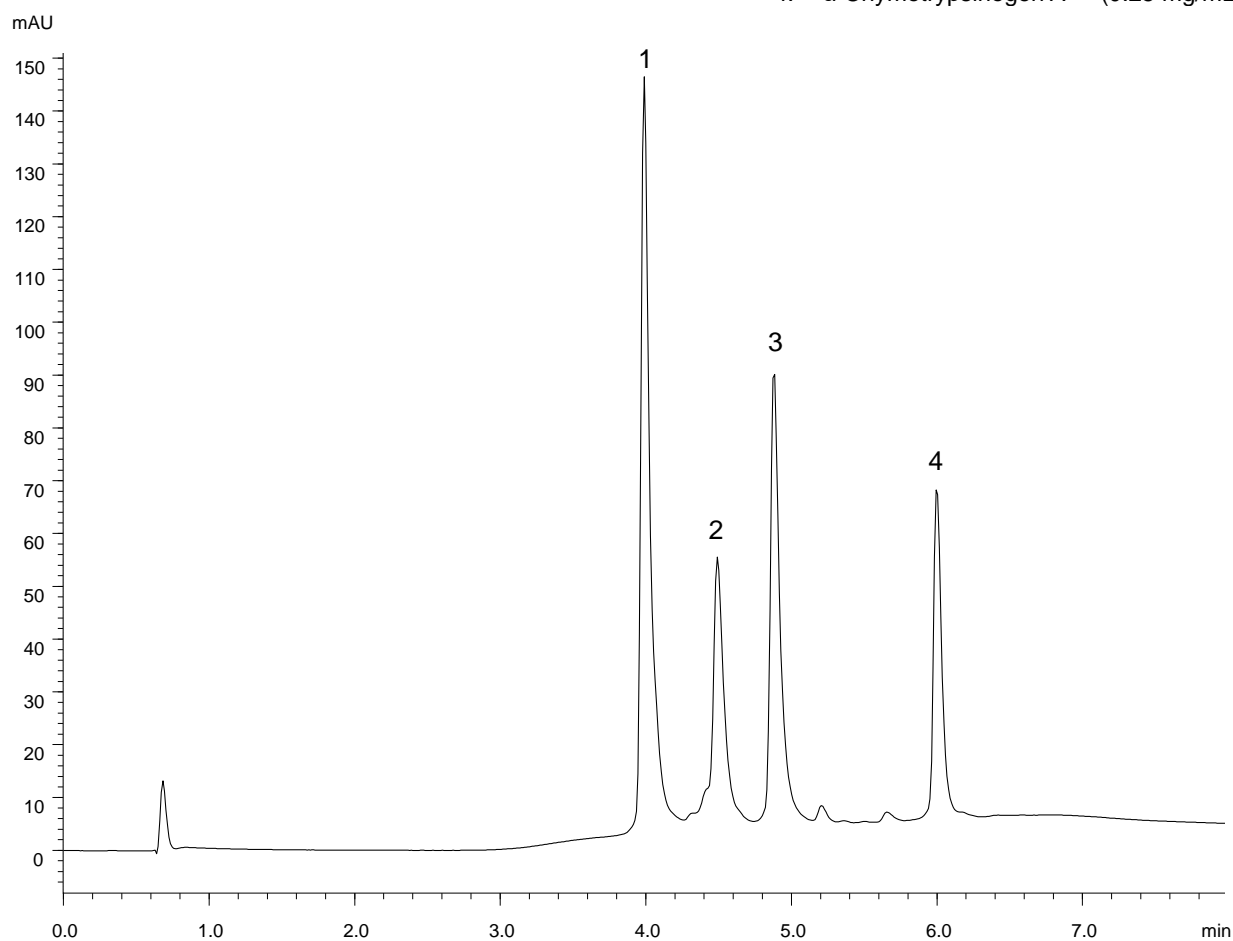


タンパク質  
Proteins

L171208F02

- |    |                              |              |
|----|------------------------------|--------------|
| 1. | Myoglobin                    | (0.73 mg/mL) |
| 2. | Ribonuclease A               | (0.75 mg/mL) |
| 3. | Lysozyme                     | (0.25 mg/mL) |
| 4. | $\alpha$ -Chymotrypsinogen A | (0.25 mg/mL) |



Column : BioPro HIC BF (4  $\mu$ m)  
100 X 4.6 mmI.D.

Eluent : A) 100 mM NaH<sub>2</sub>PO<sub>4</sub>-Na<sub>2</sub>HPO<sub>4</sub> containing 2.0 M (NH<sub>4</sub>)<sub>2</sub>SO<sub>4</sub> (pH 7.0)  
B) 100 mM NaH<sub>2</sub>PO<sub>4</sub>-Na<sub>2</sub>HPO<sub>4</sub> (pH 7.0)  
0-100%B (0-4.58 min), 100%B (4.58-6.58 min)

Flow rate : 1.2 mL/min

Temperature : 25°C

Detection : UV at 280 nm

Injection : 15  $\mu$ L