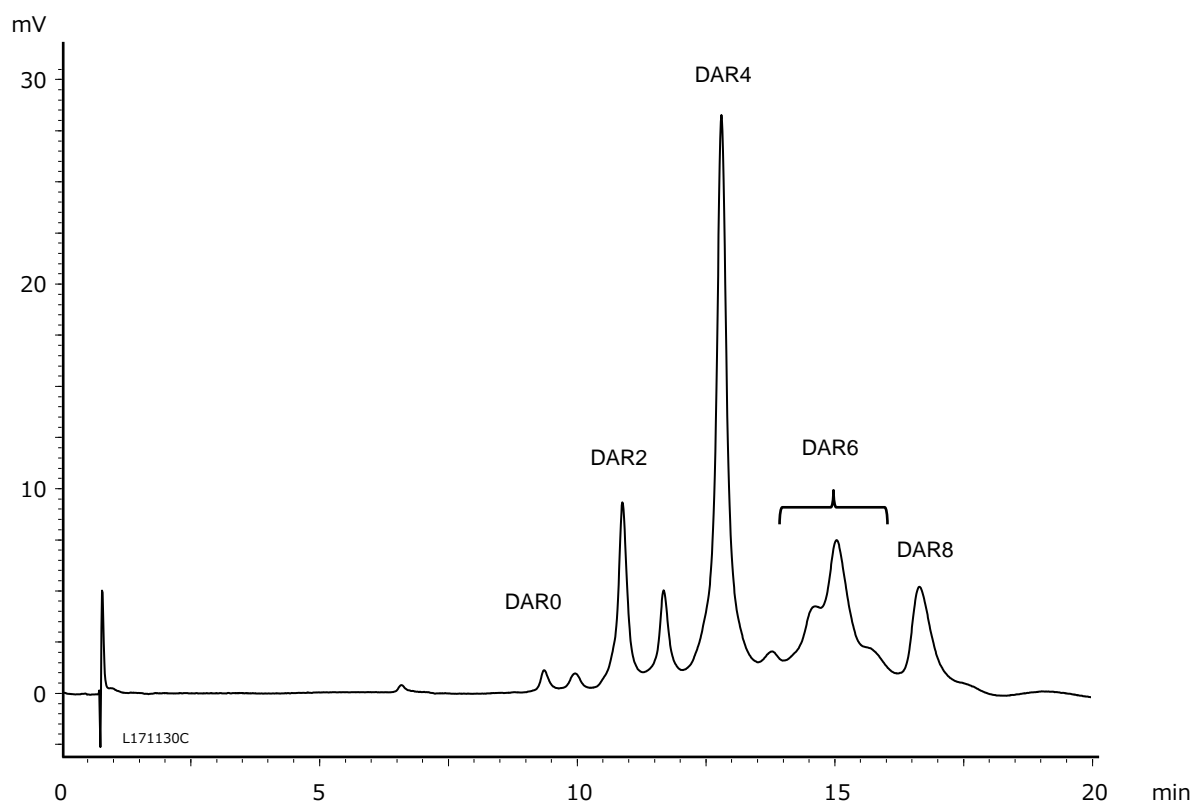


抗体薬物複合体 (ADC) の薬物抗体比 (DAR) 分析
Drug-to-Antibody Ratio (DAR) analysis of ADCs*

L171130C

*ADCs : Antibody-Drug Conjugates



Column : BioPro HIC BF (4 μ m), 100 X 4.6 mm I.D.
 Eluent : A) 50 mM NaH₂PO₄-Na₂HPO₄ containing 1.5 M (NH₄)₂SO₄ (pH 7.0)/2-propanol (95/5)
 B) 50 mM NaH₂PO₄-Na₂HPO₄ (pH 7.0)/2-propanol (80/20)
 0%B (0-1 min), 0-100%B (1-15 min), 100%B (15-20 min)
 Flow rate : 1.0 mL/min
 Temperature : 25°C
 Detection : UV at 280 nm
 Injection volume : 5 μ L
 Sample : Cysteine-conjugated ADC mimic (5 mg/mL)