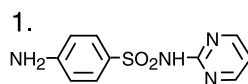
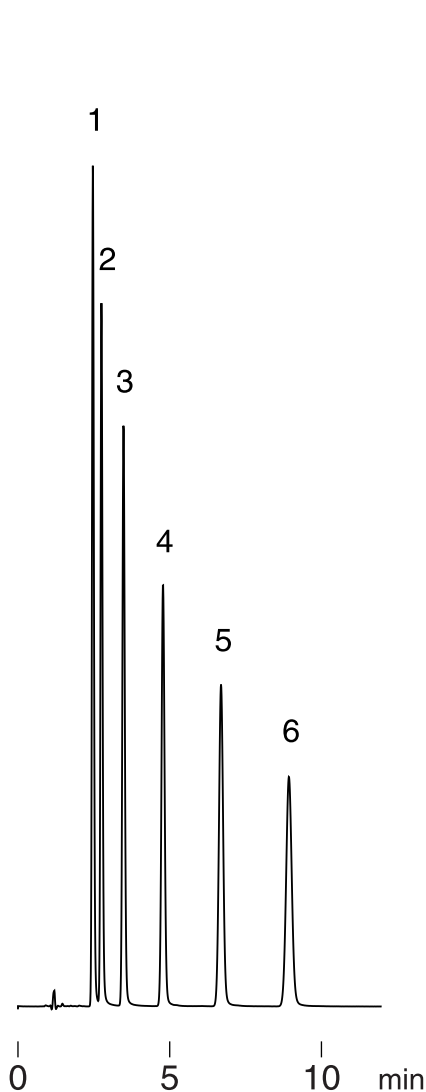
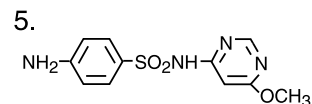


サルファ剤
Sulfonamides

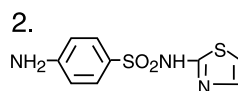
J010130D



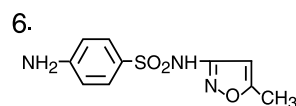
Sulfadiazine



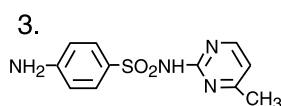
Sulfamonomethoxine



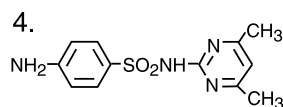
Sulfathiazole



Sulfamethoxazole



Sulfamerazine



Sulfadimidine

Column : Hydrosphere C18 (3 μ m, 12nm)
75 \times 2.0 mm I.D.
Eluent : 10mM CH₃COOH - CH₃COONH₄ (pH 4.6) / acetonitrile
(85/15)
Flow rate : 0.2 mL/min
Temperature : 37 $^{\circ}$ C
Detection : UV at 275 nm, 0.16 AUFS
Injection : 2 μ L (0.02 mg/mL)