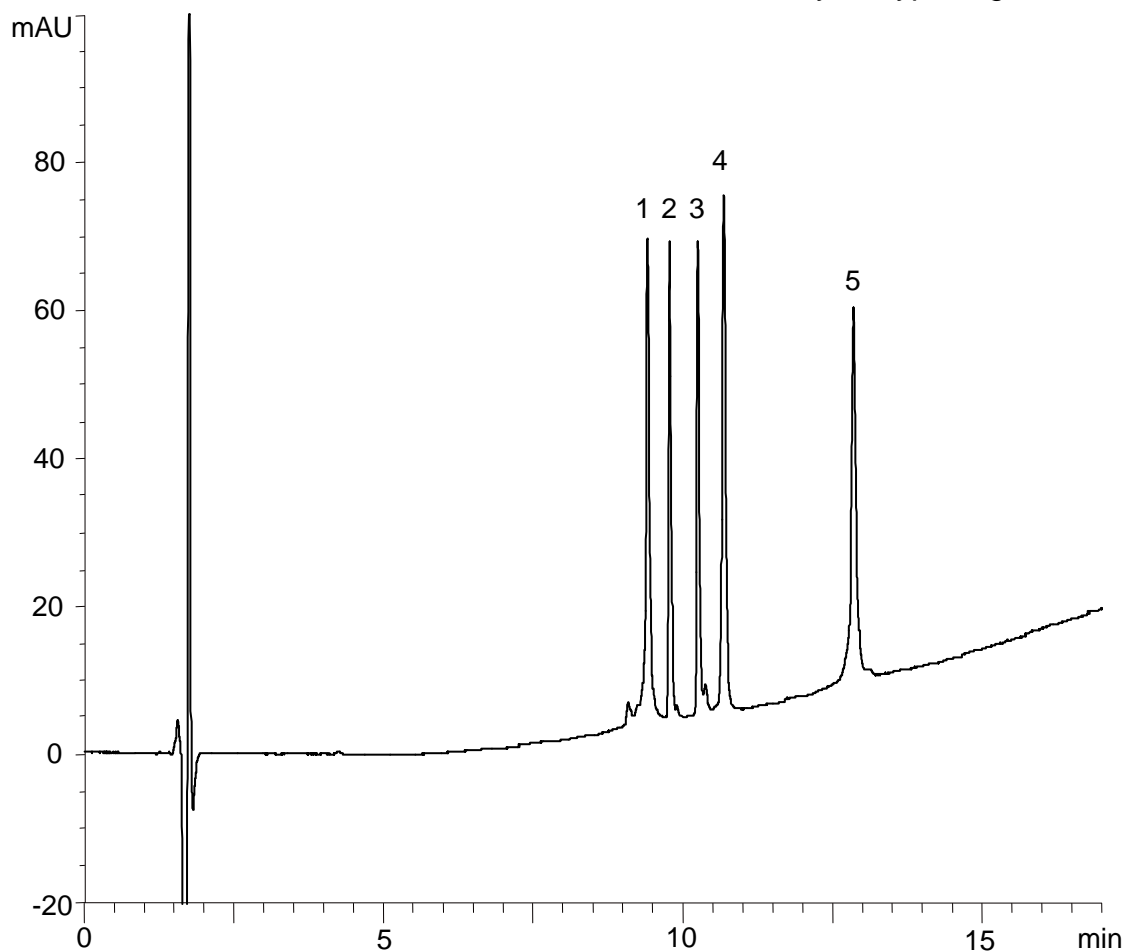


ペプチドおよびタンパク質 (MW 4,300 - 25,700)

Peptides and proteins (MW 4,300 - 25,700)

H140219D

- |                                   |             |
|-----------------------------------|-------------|
| 1. Cytochrome c                   | (MW 12,400) |
| 2. Insulin                        | (MW 5,700)  |
| 3. Amyloid $\beta$ protein (1-40) | (MW 4,300)  |
| 4. Lysozyme                       | (MW 14,000) |
| 5. $\alpha$ -Chymotrypsinogen A   | (MW 25,700) |



Column : Meteoric Core C18 BIO (2.7  $\mu$ m, 16 nm)  
150 X 2.1 mm I.D.

Eluent : A) water/TFA (100/0.1)  
B) acetonitrile/TFA (100/0.1)  
25-70%B (0-15 min), 70%B (15-17 min)

Flow rate : 0.2 mL/min

Temperature : 40°C

Detection : UV at 220 nm

Injection : 2  $\mu$ L (0.05-0.2 mg/mL)

Pressure : 12.8-16.1 MPa (1860-2330 psi)