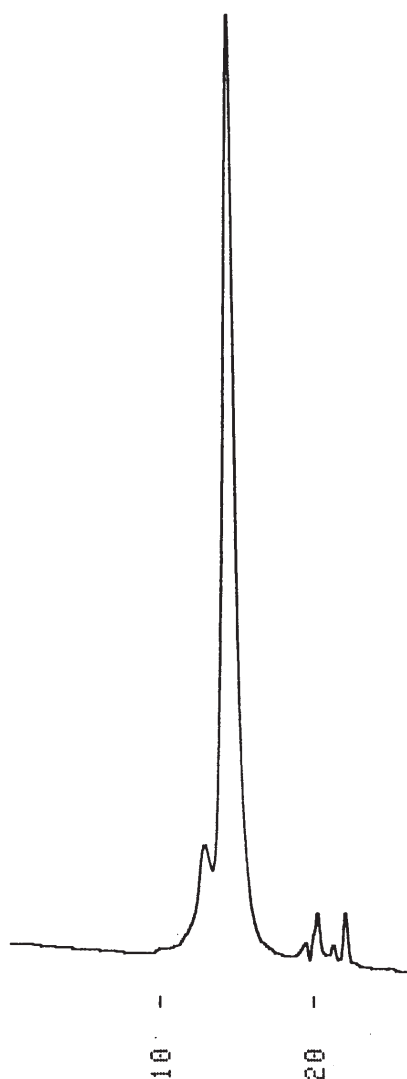


ヒト免疫グロブリン(IgA)  
Normal human IgA

G920108C



1.Normal human IgA

Column	: YMC-Pack Diol-300 500 × 8.0 mm I.D.
Eluent	: 0.1M NaH <sub>2</sub> PO <sub>4</sub> - Na <sub>2</sub> HPO <sub>4</sub> (pH 6.8) containing 0.1M Na <sub>2</sub> SO <sub>4</sub>
Flow rate	: 1.0 mL/min
Temperature	: ambient (24 °C)
Detection	: UV at 280 nm, 0.02 AUFS
Injection	: 20 μL (1.0 mg/mL)