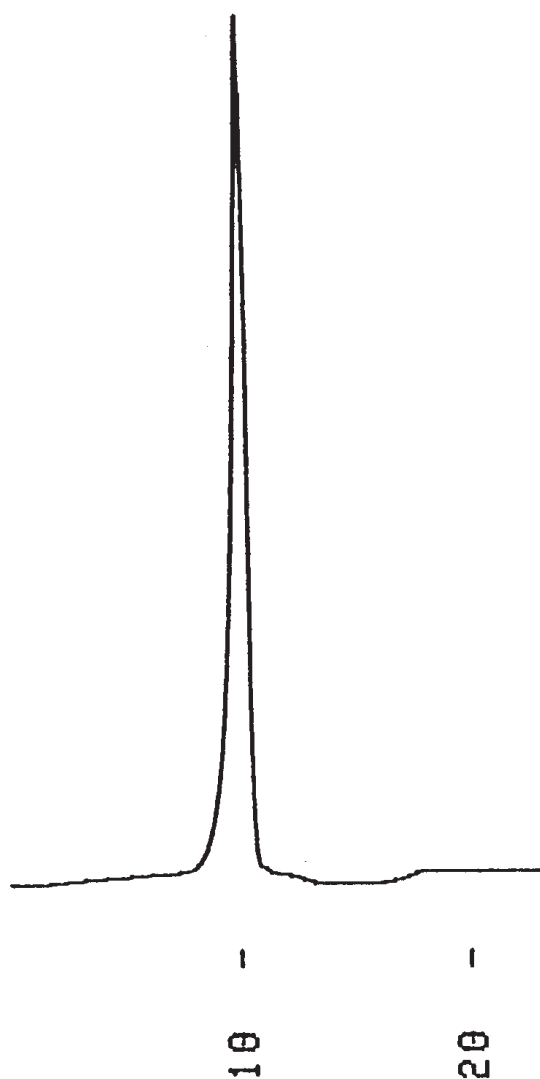


コンドロイチン硫酸 B
Chondroitin sulfate B

G920107E



1.Chondroitin sulfate B, Na salt

Column	: YMC-Pack Diol-300 500 × 8.0 mm I.D.
Eluent	: water
Flow rate	: 1.0 mL/min
Temperature	: ambient (24 °C)
Detection	: RI, 32 × 10 ⁻⁶ RIU/FS
Injection	: 20 μL (5.0 mg/mL)