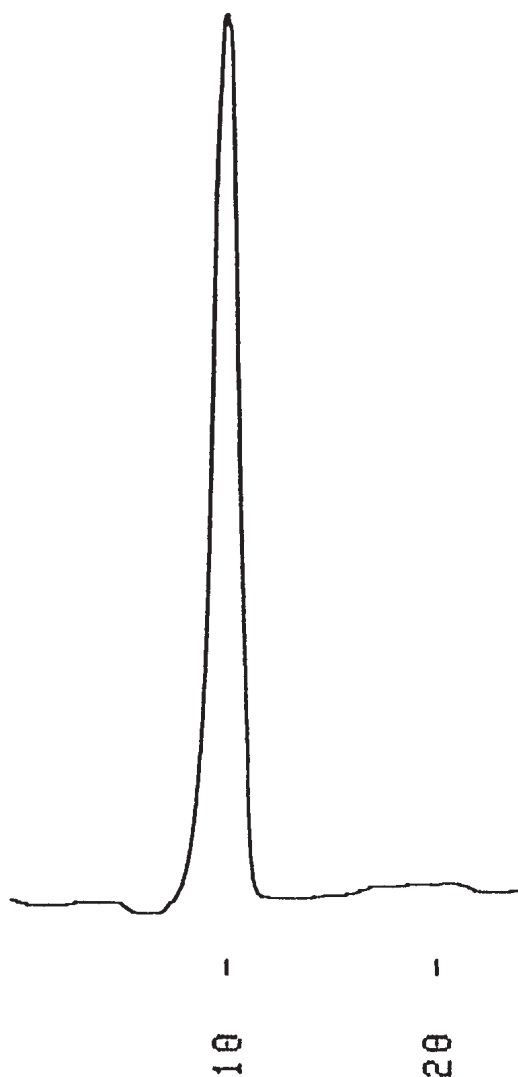


コンドロイチン硫酸 A
Chondroitin sulfate A

G920107C



1.Chondroitin sulfate A, Na salt

Column : YMC-Pack Diol-300
500 × 8.0 mm I.D.
Eluent : water
Flow rate : 1.0 mL/min
Temperature : ambient (24 °C)
Detection : RI, 32 × 10⁻⁶ RIU/FS
Injection : 20 μL (5.0 mg/mL)