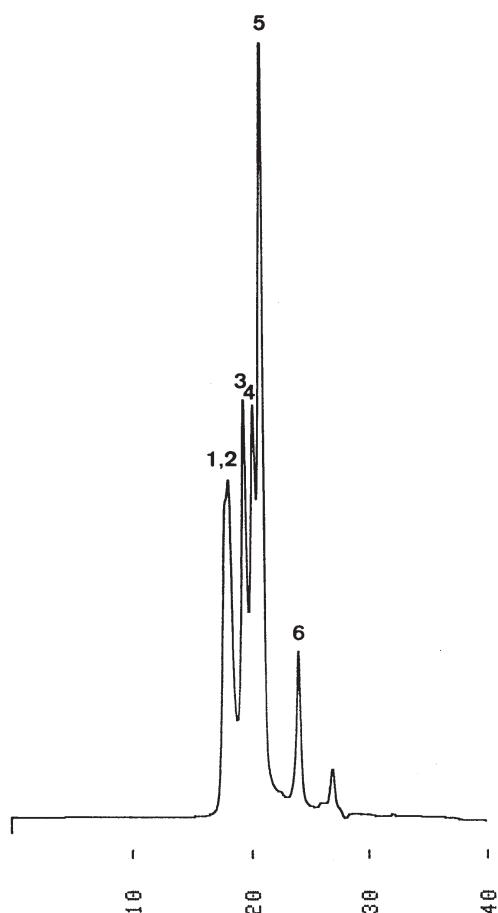


ミオグロビン分解物

Peptide fragments from myoglobin

G911218A



1. 1-153 (MW 17,000)
2. 1-131 (MW 14,500)
3. 56-153 (MW 10,700)
4. 56-131 (MW 8,200)
5. 1-55 (MW 6,300)
6. 132-153 (MW 2,500)

Column : YMC-Pack Diol-120
500 × 8.0 mm I.D.

Eluent : 0.1M KH₂PO₄ - K₂HPO₄ (pH 7.0) containing
0.2M NaCl/acetonitrile (70/30)

Flow rate : 0.7 mL/min

Temperature : ambient (25 °C)

Detection : UV at 215 nm, 0.32 AUFS

Injection : 20 μL (2.0 mg/mL)

Sample : cyanogen bromide cleavages of horse heart myoglobin.
Molecular Weight Marker for proteins, manufactured by
Fluka Chemie AG.