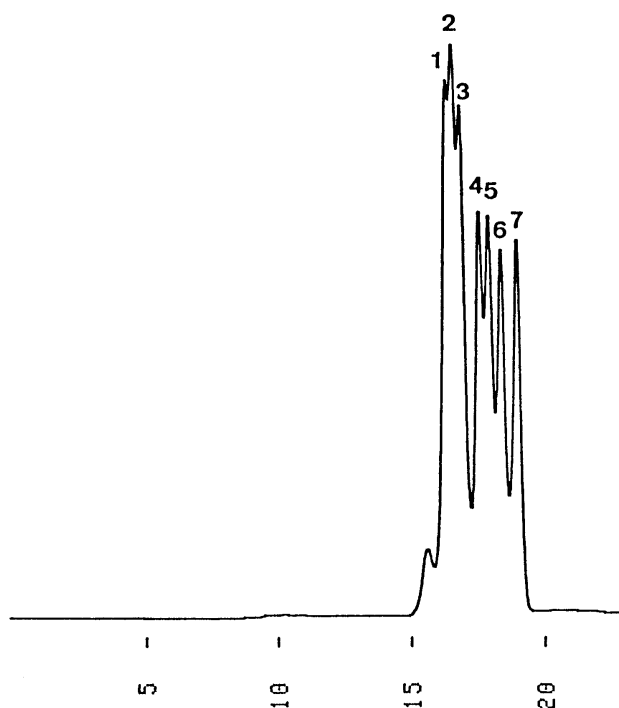


マルトオリゴ糖(G₁~G₁₅)
Maltooligosaccharides(G₁~G₁₅)

G911216F

1. Maltopentadecaose (G₁₅)
2. Maltotridecaose (G₁₃)
3. Maltoundecaose (G₁₁)
4. Maltoheptaose (G₇)
5. Maltopentaose (G₅)
6. Maltotriose (G₃)
7. Glucose (G₁)



Column : YMC-Pack Diol-120
500 × 8.0 mm I.D.
Eluent : water
Flow rate : 1.0 mL/min
Temperature : ambient (24 °C)
Detection : RI, 64 × 10⁻⁶ RIU/FS
Injection : 60 μL (0.60~0.75 mg/mL)