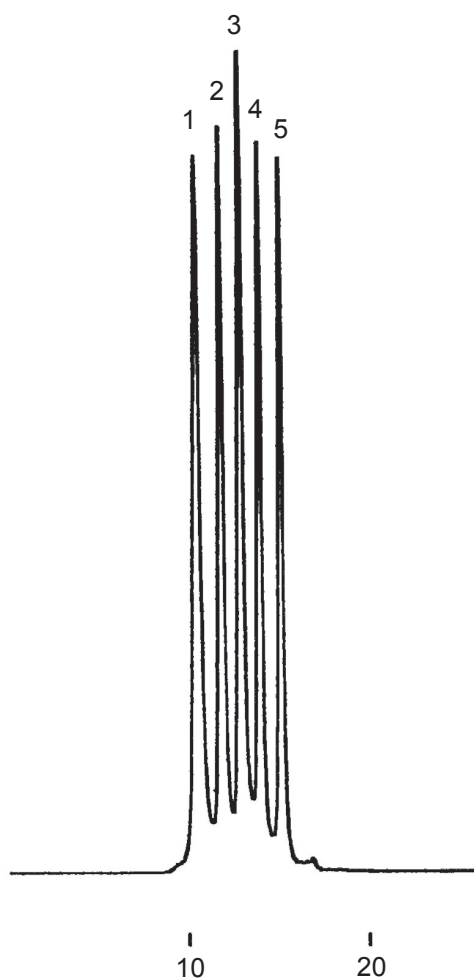


タンパク分子量マーカー

Proteins for molecular weight marker

G911214I



1. Glutamate dehydrogenase (MW 290,000)
2. Lactate dehydrogenase (MW 142,000)
3. Enolase (MW 67,000)
4. Adenylate kinase (MW 32,000)
5. Cytochrome *c* (MW 12,400)

Column	: YMC-Pack Diol-200 300 × 8.0 mm I.D.
Eluent	: 0.1M KH ₂ PO ₄ -K ₂ HPO ₄ (pH 7.0) containing 0.2M NaCl
Flow rate	: 0.7 mL/min
Temperature	: ambient (26 °C)
Detection	: UV at 280 nm, 0.16 AUFS
Injection	: 15 μL (100 μL/1 vial)
Sample	: MW-Marker(HPLC) manufactured by ORIENTAL YEAST CO.,LTD.