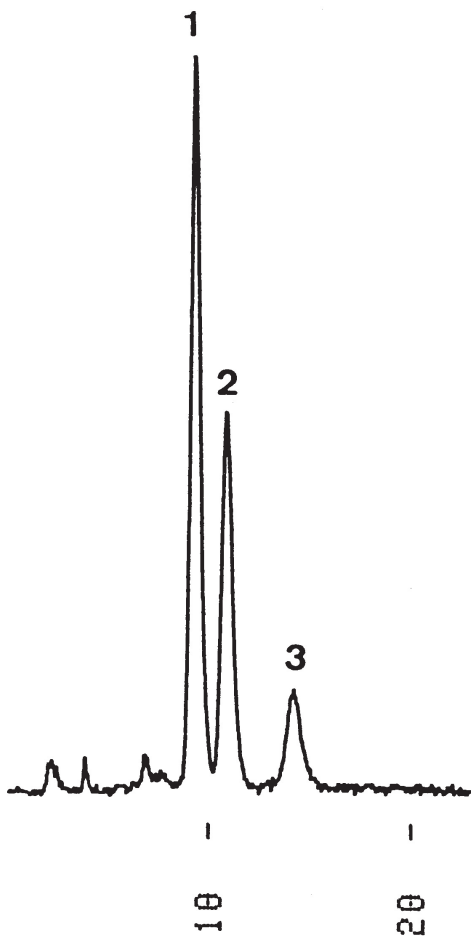


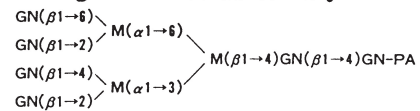
ピリジルアミノ化(PA)糖
Pyridylamino(PA)-Sugar chains

G910620A



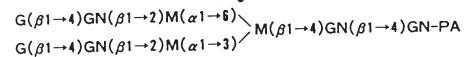
1.PA-Sugar Chain 014

N-Acetylglucosamine type,
agalacto tetraantennary



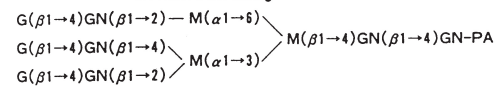
2.PA-Sugar Chain 001

N-Acetylglucosamine type,
biantennary

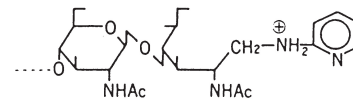


3.PA-Sugar Chain 002

N-Acetylglucosamine type,
triantennary



G : galactose
GN : N-acetylglucosamine
M : mannose
F : fucose
PA : pyridylamino(group)



Column : YMC-Pack Polyamine II
150 × 4.6 mm I.D.
Eluent : methanol/20mM NH₄H₂PO₄ (60/40)
Flow rate : 1.0 mL/min
Temperature : 37 °C
Detection : FLS at Ex. 320 nm, Em. 400 nm, 4 mV/FS
Injection : 3 μL (3.3 pmol/mL)
Sample : PA-Sugar Chain Series
manufactured by TAKARA SHUZO CO., LTD.