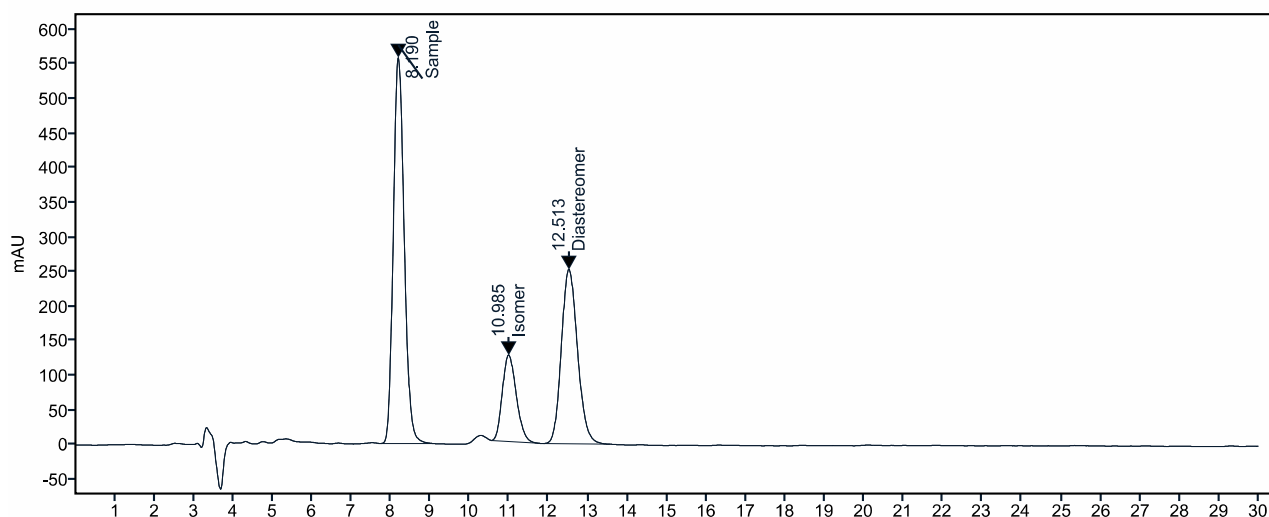


## Chiral separation of rimegepant using CHIRAL ART Cellulose-SB

Rimegepant (Vydura®) is a calcitonin gene-related peptide (CGRP) receptor antagonist containing multiple stereogenic centers that influence its pharmacological profile. As a result, stereoisomeric impurities can arise during synthesis and must be carefully controlled. Their selective separation represents an analytical challenge and requires a highly discriminating chiral stationary phase. In this Application

Note, the CHIRAL ART Cellulose-SB column, featuring a robust immobilised cellulose-based selector with enhanced stereoselectivity, enables the effective separation of rimegepant from an isomer and a diastereomer. The method demonstrates high resolution, sensitivity, and robustness suitable for pharmaceutical quality control.



Column: Chiral ART Cellulose-SB (5  $\mu$ m) 250 x 4.6 mm ID  
Eluent: n-hexane / 2-propanol / methanol / diethylamine (40/30/30/0.1)  
Flowrate: 1.0 mL/min  
Temperature: 25°C  
Detection: UV at 215 nm  
Injection: 10  $\mu$ L (1 mg/mL)

Application data by YMC India Pvt. Ltd.