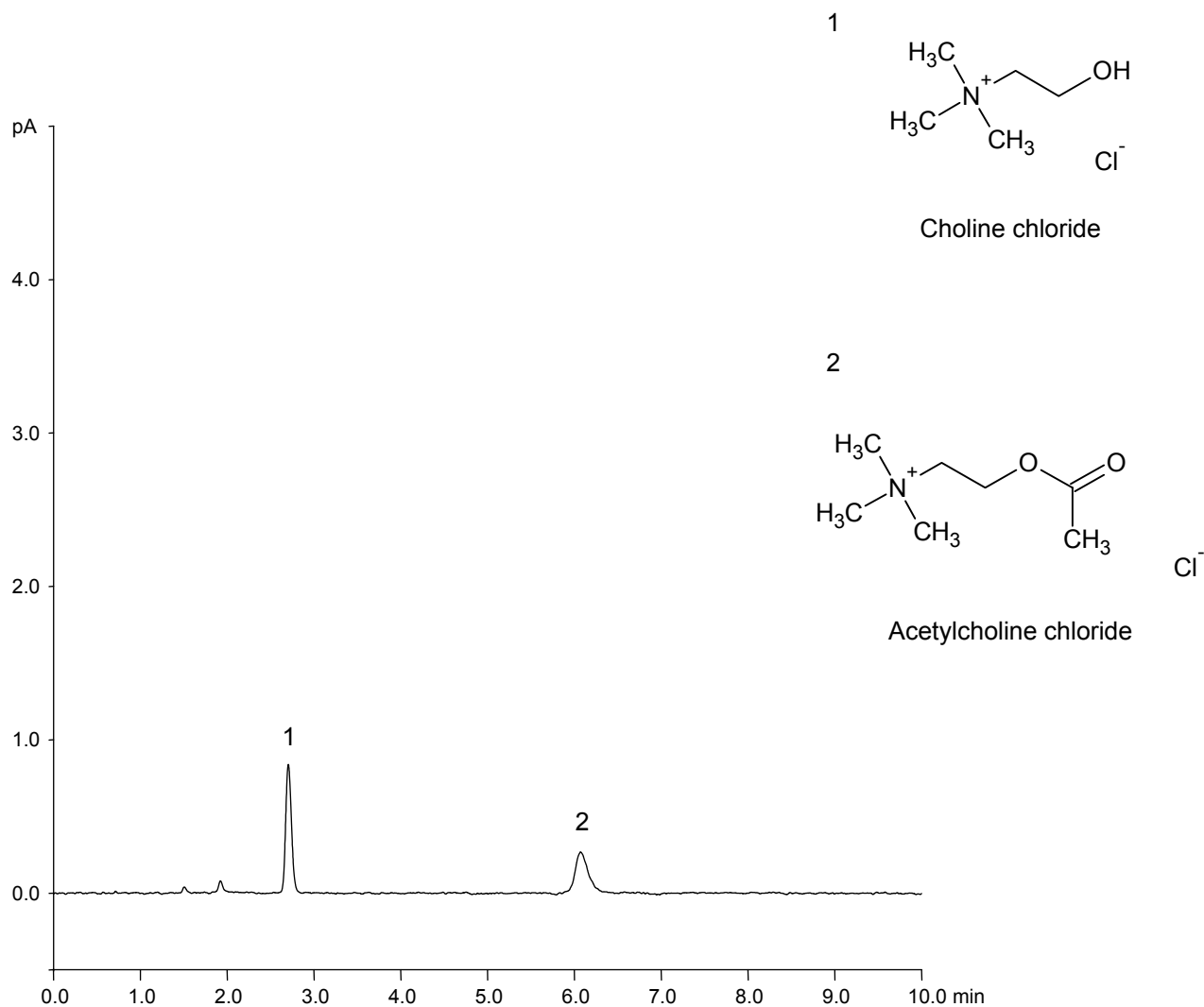


アセチルコリンおよびコリン  
Analysis of acetylcholine and choline

F130703A



Column : YMC-Triart PFP (5 μm, 12 nm)  
150 X 4.6 mm I.D.

Eluent : methanol/water (5/95) containing 10 mM formic acid

Flow rate : 1.0 mL/min

Temperature : 25°C

Detection : Corona® CAD® (Charged Aerosol Detector)

Injection : 3 μL (10 μg/mL)