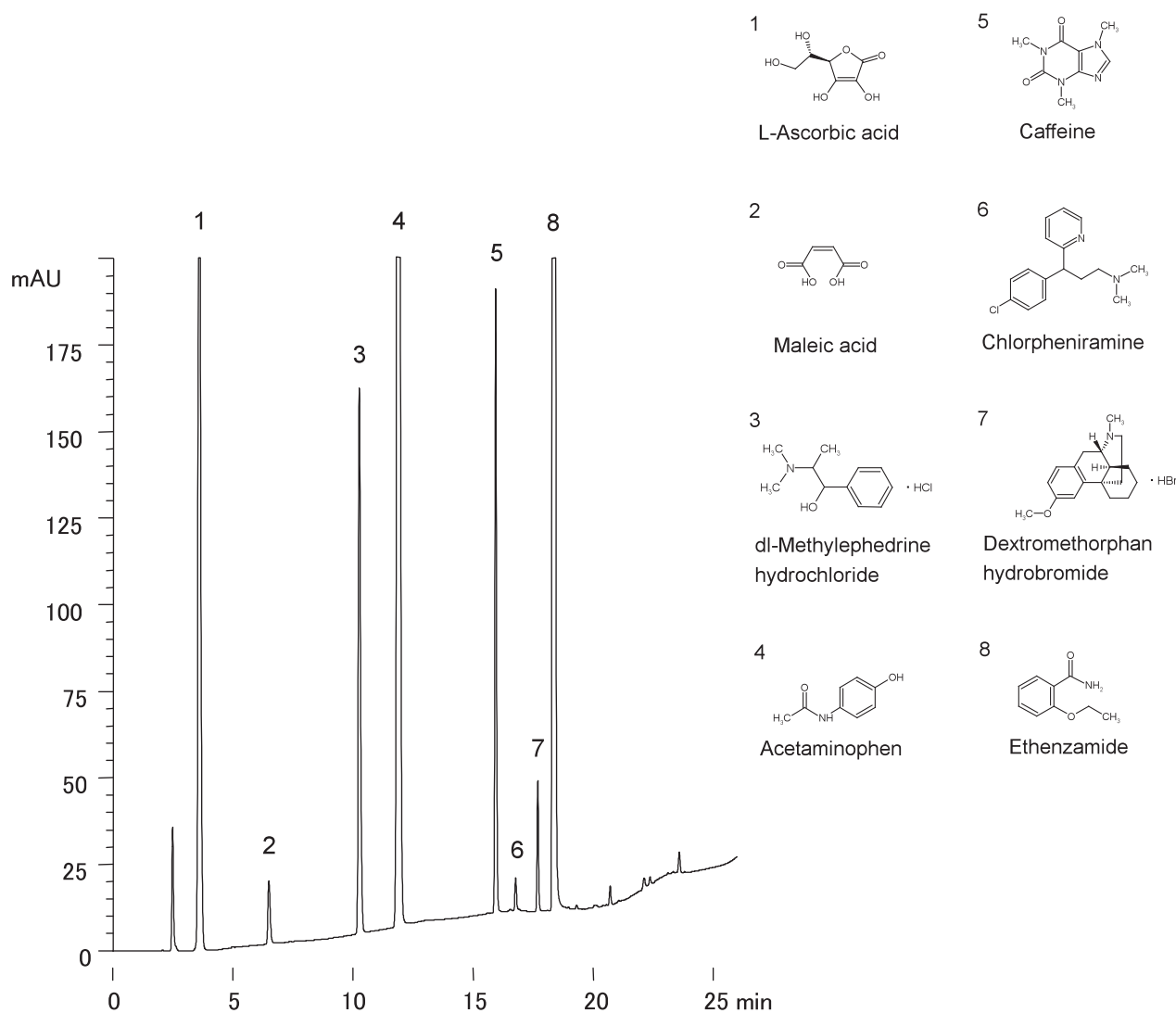


市販風邪薬  
A commercial cough/cold medication

F040616B



Column : Hydrosphere C18 (5  $\mu$ m, 12nm)  
150  $\times$  4.6 mm I.D.

Eluent : A) 20mM KH<sub>2</sub>PO<sub>4</sub> - H<sub>3</sub>PO<sub>4</sub> (pH 2.5)  
B) methanol  
0-20%B(0-10min), 20-90%B(10-20min), 90%B(20-25min)

Flow rate : 1.0 mL/min

Temperature : 37  $^{\circ}$ C

Detection : UV at 210 nm(0-13min), UV at 235 nm(13-25min)

Injection : 15  $\mu$ L (1.5 mg/mL)

Sample : 70% methanol extract of a commercially available cough/cold medication