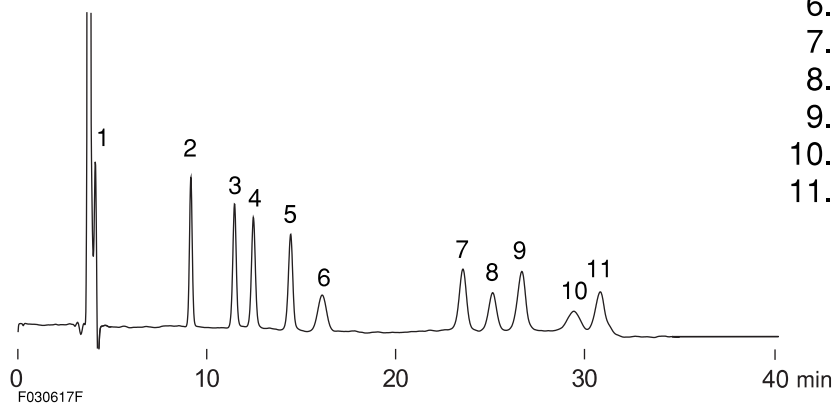


市販キャンディー中の糖類  
Sugars in hard candy

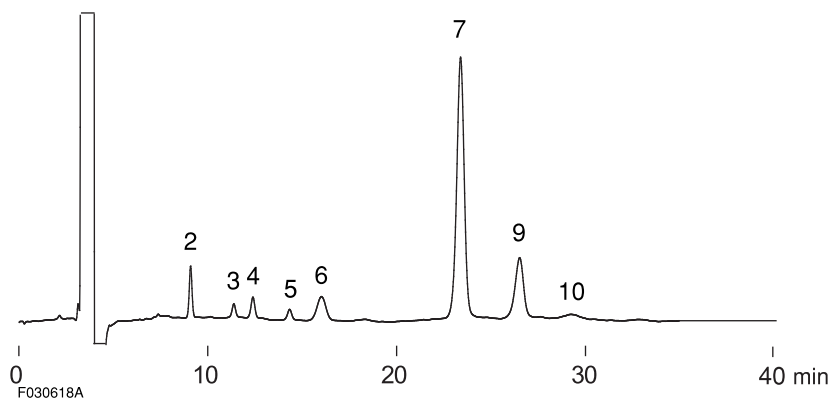
F030618A

1. Sucralose
2. Erythritol
3. Xylitol
4. Fructose
5. Sorbitol
6. Glucose
7. Sucrose
8. Palatinose
9. Maltitol
10. Maltose
11. Lactitol

A) Standard



B) Hard candy (Sample KM)



Column : YMC-Pack Polyamine II  
250 × 4.6 mm I.D.

Eluent : acetonitrile/water (75/25)

Flow rate : 1.0 mL/min

Temperature : 25 °C

Detection : RI, 32 × 10<sup>-6</sup> RIU/FS

Injection : 5 μL

Sample : A) 5 mg/mL  
B) 50 mg/mL (50% ethanol solution of candy)