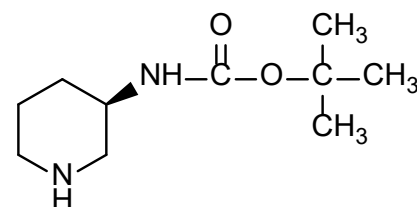
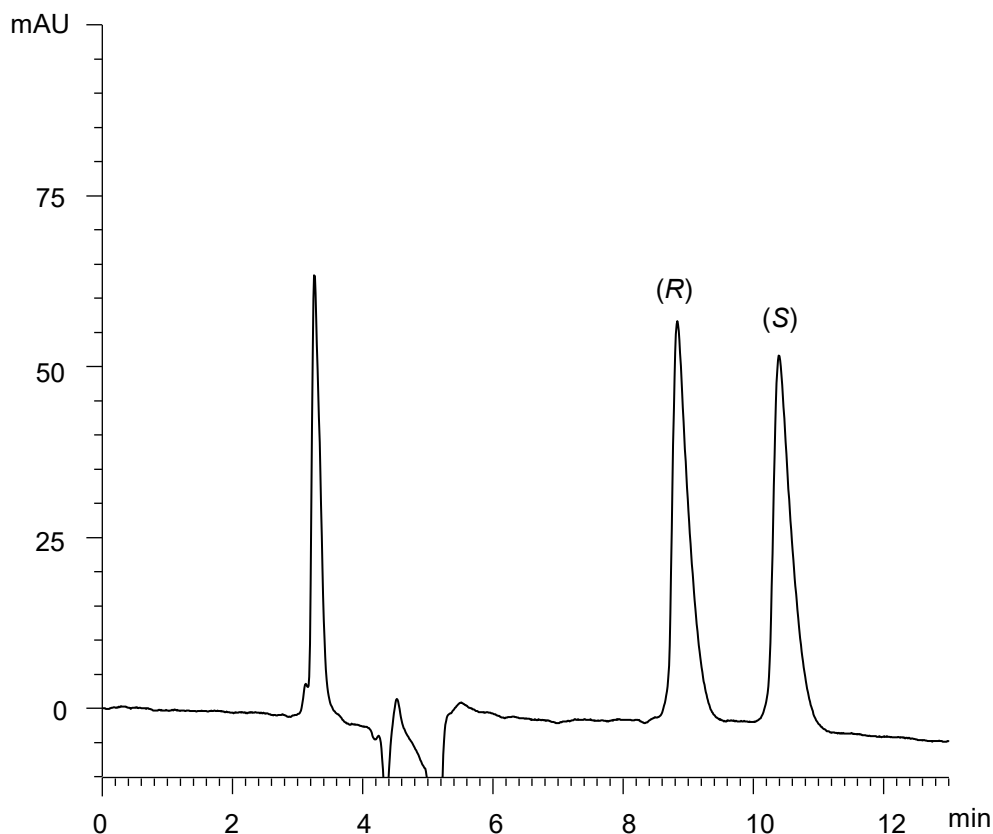


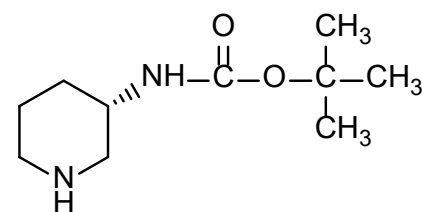
3-(*tert*-ブトキシカルボニルアミノ)ピペリジン

3-(*tert*-Butoxycarbonylamino)piperidine

E171220A



(R)



(S)

α	1.2
R_s	3.1

Column : CHIRAL ART Cellulose-SC (5 μ m)
250 X 4.6 mm I.D.

Eluent : *n*-hexane/ethanol/diethylamine (90/10/0.1)

Flow rate : 1.0 mL/min

Temperature : 25°C

Detection : UV at 220 nm

Injection : 10 μ L (5 mg/mL)