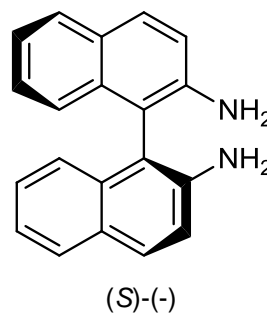
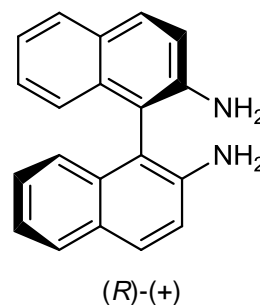
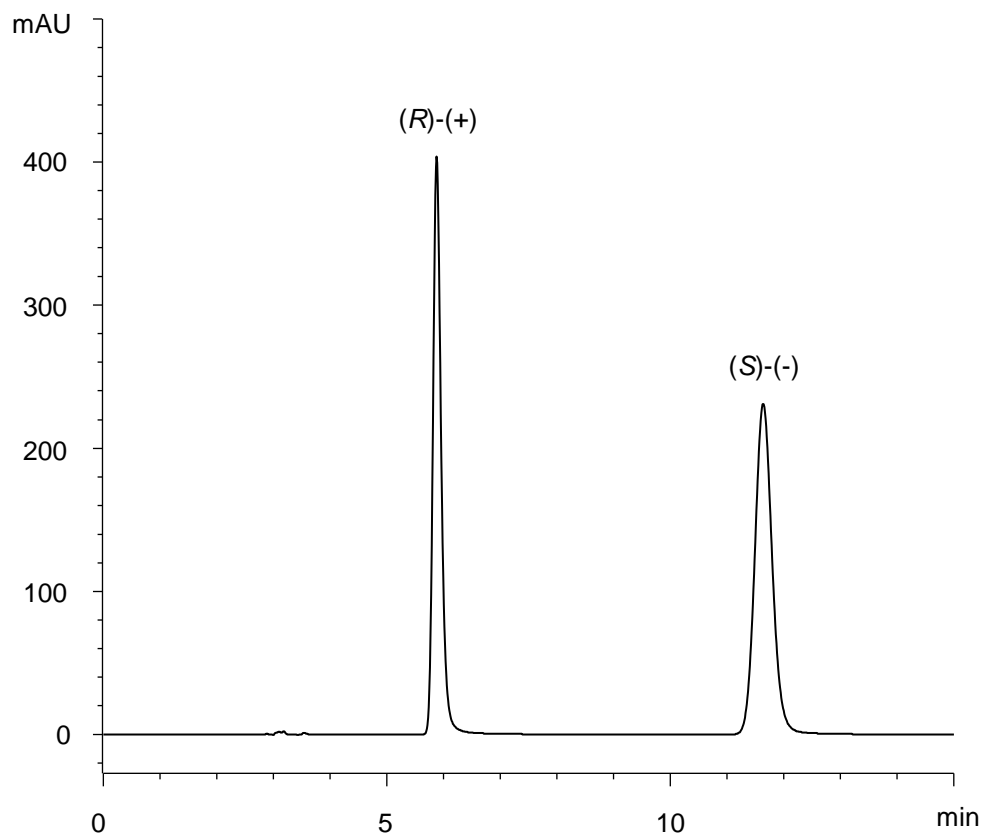


1,1'-ビナフチル-2,2'-ジアミン  
1,1'-Binaphthyl-2,2'-diamine

E170801V



$\alpha$	2.9
$R_s$	14.3

Column : CHIRAL ART Amylose-SA (5  $\mu$ m)  
250 X 4.6 mm I.D.  
Eluent : *n*-hexane/2-propanol (50/50)  
Flow rate : 1.0 mL/min  
Temperature : 25°C  
Detection : UV at 240 nm  
Injection : 10  $\mu$ L (0.025 mg/mL)  
Sample : Supplied by Tokyo Chemical Industry Co., Ltd.