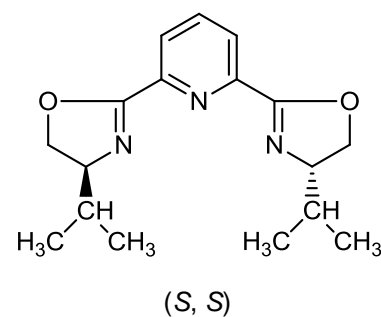
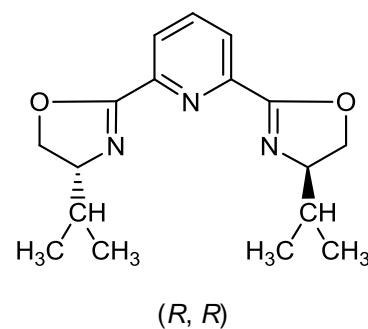
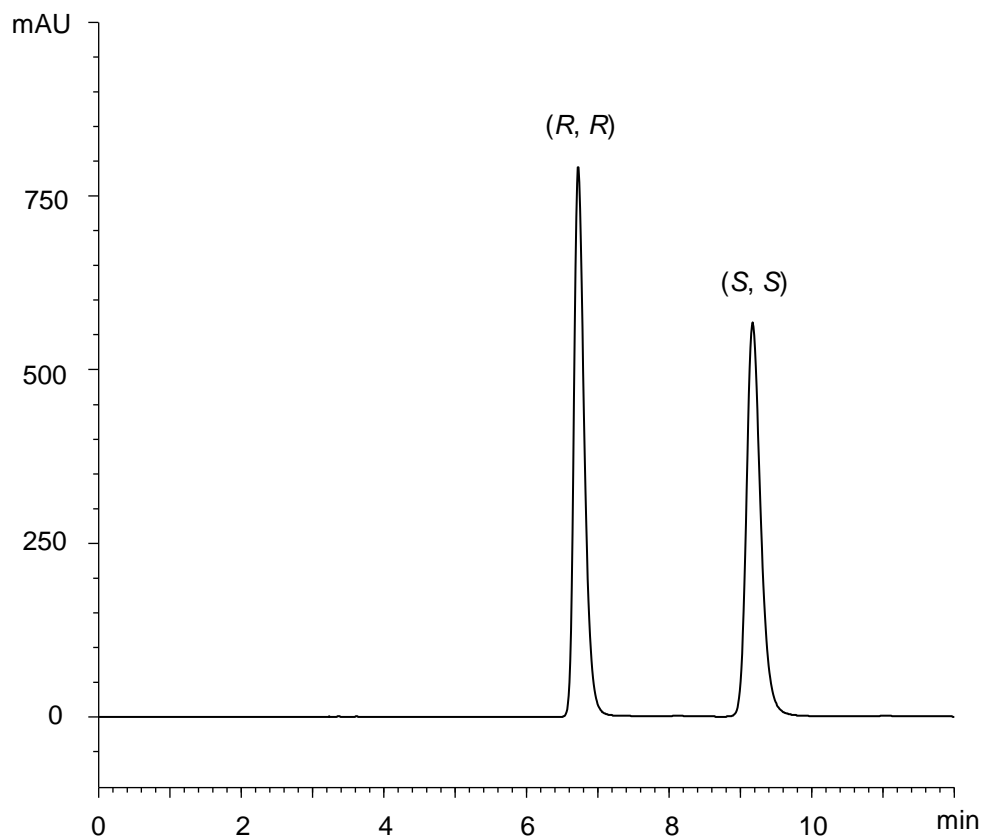


2,6-ビス(4-イソプロピル-2-オキサゾリン-2-イル)ピリジン

2,6-Bis(4-isopropyl-2-oxazolin-2-yl)pyridine

E170727B



$\alpha$	1.6
$R_s$	7.6

Column : CHIRAL ART Cellulose-C (5  $\mu$ m)  
250 X 4.6 mm I.D.

Eluent : *n*-hexane/2-propanol (60/40)

Flow rate : 1.0 mL/min

Temperature : 25°C

Detection : UV at 285 nm

Injection : 10  $\mu$ L (0.5 mg/mL)

Sample : Supplied by Tokyo Chemical Industry Co., Ltd.