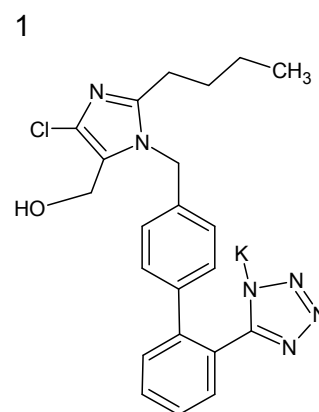
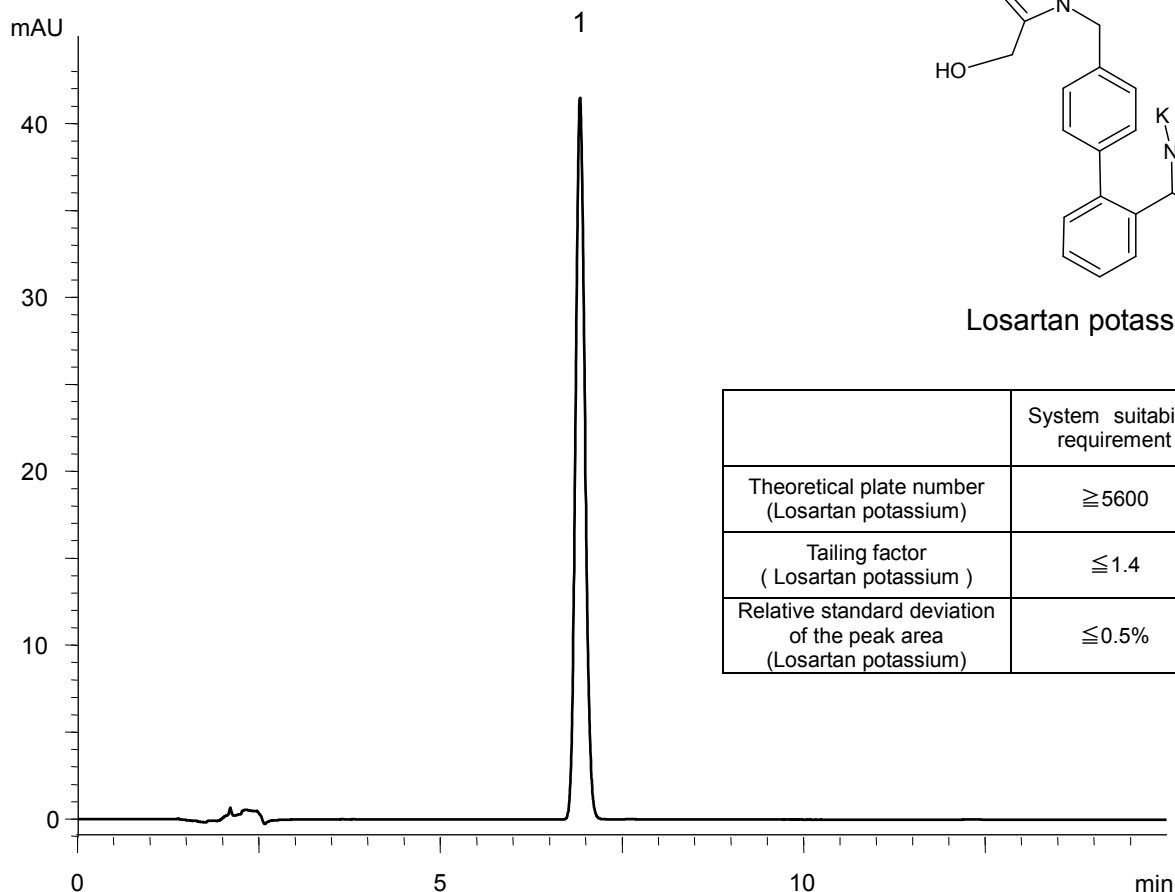


ロサルタンカリウム (米国薬局方記載条件)  
Losartan potassium (The United States Pharmacopeia)

D111104A

Standard solution \*  
(0.25 mg/mL Losartan potassium)



Losartan potassium

	System suitability requirement	Result
Theoretical plate number (Losartan potassium)	$\geq 5600$	13400
Tailing factor (Losartan potassium)	$\leq 1.4$	1.13
Relative standard deviation of the peak area (Losartan potassium)	$\leq 0.5\%$	0.07%

Column : YMC-Triart C18 (5  $\mu$ m, 12 nm)  
250 X 4.0 mmI.D.  
Eluent : acetonitrile/0.1% phosphoric acid (40/60)  
Flow rate : 1.0 mL/min  
Temperature : 35°C  
Detection : UV at 254 nm  
Injection : 10  $\mu$ L  
(The United States Pharmacopeia 34th; Assay)

\* Standard solution was prepared from Losartan potassium supplied as a reagent for laboratory use.