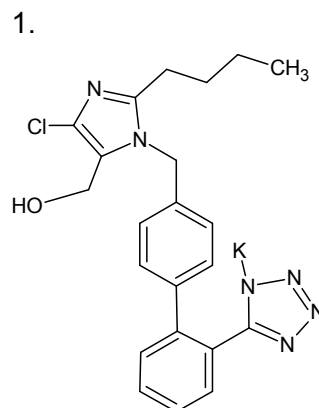
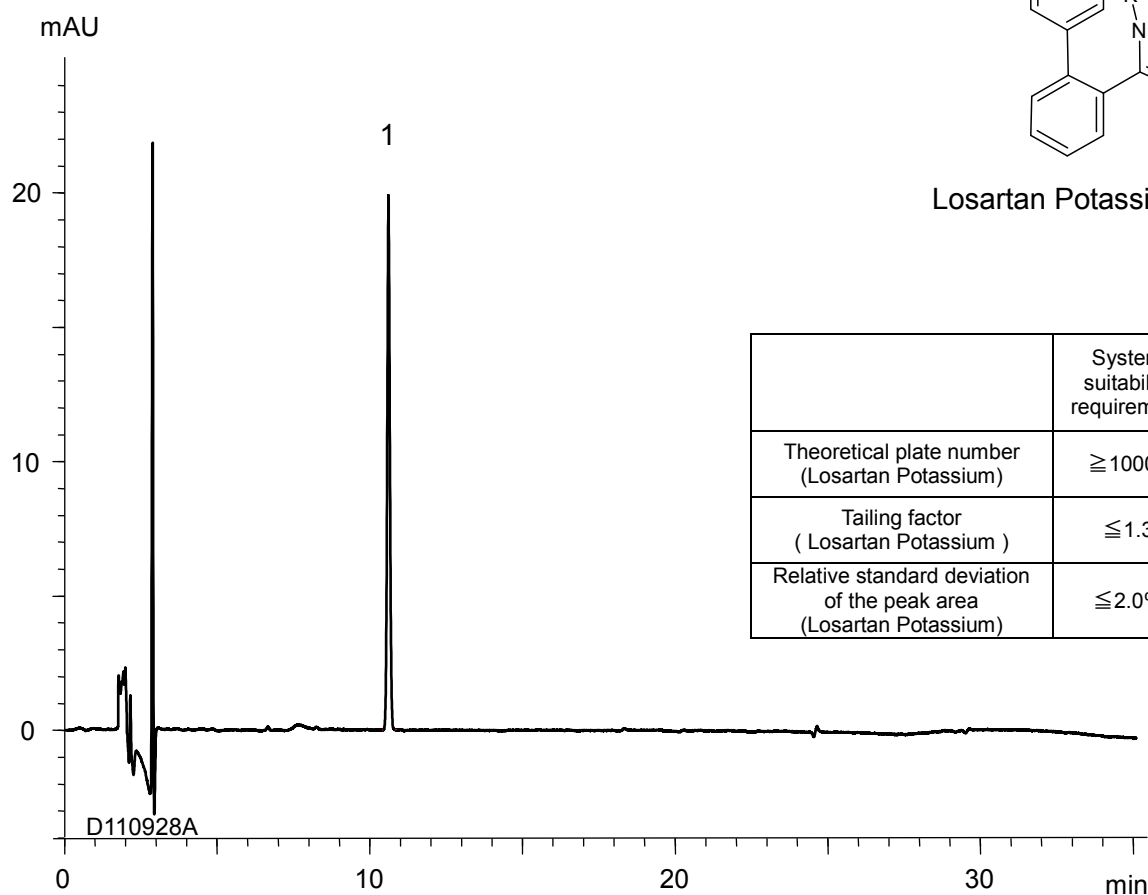


ロサルタンカリウム  
Losartan Potassium

D110928A



Losartan Potassium



	System suitability requirement	result
Theoretical plate number (Losartan Potassium)	$\geq 10000$	66800
Tailing factor (Losartan Potassium)	$\leq 1.3$	1.07
Relative standard deviation of the peak area (Losartan Potassium)	$\leq 2.0\%$	0.48%

Column : YMC-Triart C18 (5  $\mu$ m, 12 nm)  
250 X 4.0 mmI.D.

Eluent : A) 0.1% phosphoric acid  
B) acetonitrile  
25-90%B (0-25 min), 90%B (25-35 min)

Flow rate : 1.0 mL/min

Temperature : 25°C

Detection : UV at 220 nm

Injection : 10  $\mu$ L (0.003 mg/mL)

(The Japanese Pharmacopoeia 16th; Related substances)