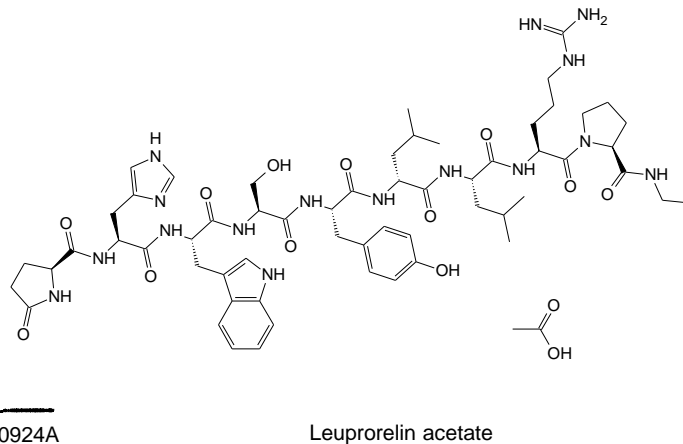
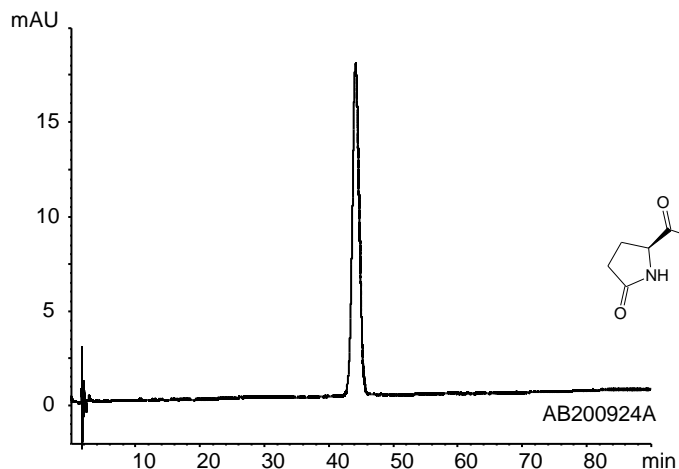


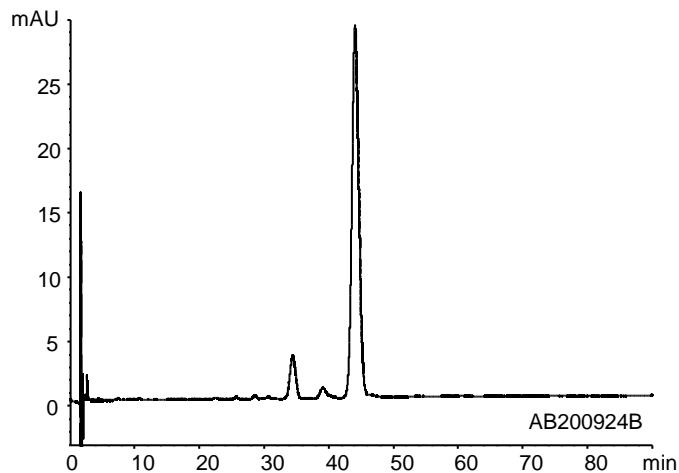
リュープロレリン酢酸塩
Leuprorelin acetate (Leuprolide acetate)

AB200926A

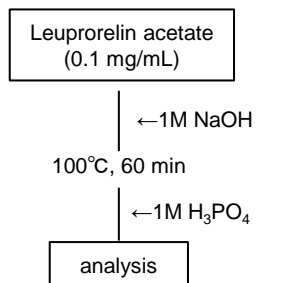
(A) Leuprorelin acetate (0.05 mg/mL)



(B) Leuprolide acetate alkali degradation



Method of alkali degradation



Column : YMC-Triart Bio C18 (3 μ m, 30 nm)
100 X 4.6 mm I.D.

Eluent : buffer (pH 3.0)* / acetonitrile / 1-propanol (85/9/6)
*Dissolve 15.2 g of triethylamine in 800 mL of water and adjust pH 3.0 with H₃PO₄, and add water to make 1000 mL.

Flow rate : 0.75 mL/min

Temperature : 25°C

Detection : UV at 220 nm

Injection : 20 μ L