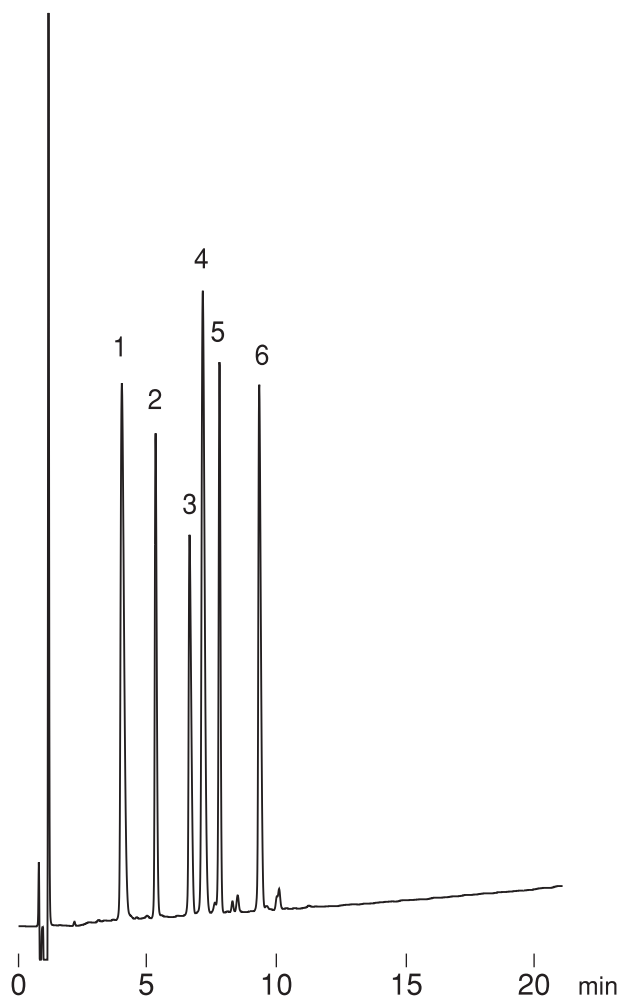


ペプチド
Peptides

A980827D



1. Bradykinin
2. Dynorphin A (Human,1-13)
3. Eledoisin related peptide
4. Neurotensin
5. Bombesin
6. Substance P

Column : YMC-Pack Pro C18 (3 μ m, 12nm)
75 \times 4.6 mm I.D.

Eluent : A) water / TFA (100/0.1)
B) acetonitrile / TFA (100/0.1)
20-40%B (0-20min, linear)

Flow rate : 1.0 mL/min

Temperature : 37 $^{\circ}$ C

Detection : UV at 220 nm, 0.32 AUFS

Injection : 15 μ L (0.05~0.15 mg/mL)