

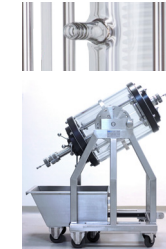
YMC Pilot Glass Columns | Overview



YMC Pilot columns are designed for use in pilot and production scale applications with organic solvents or aqueous buffers.

Your advantages are:

- Full resin compatibility
- Easy operations
- Customise your YMC Pilot column



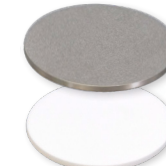
Customisations possible

- ✓ Heating/cooling jackets for temperature sensitive applications
- ✓ Rotatable racks for easy unpacking
- ✓ Additional column dimensions possible



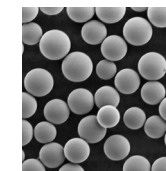
Reliable sealing: squeezed O-ring

- ✓ Long lasting, high quality materials
- ✓ Fast replacement
- ✓ Easy piston adjustment



Fully porous frits

- ✓ Optimum flow distribution
- ✓ Excellent packing results
- ✓ Different materials and porosities available



Full resin compatibility

- ✓ Organic solvent resistant version (SR)
- ✓ Biocompatible aqueous buffer version (AB)
- ✓ Longer bed length range for SEC

Specifications	
Area of application	Pilot scale applications
Inner diameters	100, 140, 200, 300 mm*
Bed lengths	500, 850 mm*
Versions	AB (Aqueous buffer) SR (Solvent resistant)
Temperature range	4–40°C
Packing adapter	available
Optional heating/cooling jacket	available
Column stand	included, rotatable racks available

* Customisation possible

Pressure resistance				
ID [mm]	100	140	200	300
Pressure limit [bar]	10	7	5	3

YMC Pilot Glass Columns | Specifications



Inner diameter	100				140			
	500 mm		850 mm		500 mm		850 mm	
Version	AB	SR	AB	SR	AB	SR	AB	SR
Bed Length [mm]	70–420 ¹	20–430 ¹	420–770 ¹	310–780 ¹	70–410 ¹	20–440 ¹	420–760 ¹	330–790 ¹
Column Volume [L]	0.6–3.2	0.2–3.3	3.3–6.0	2.5–6.1	1.1–6.3	0.4–6.7	6.5–11.6	5.1–12.1
Pressure Limit [bar]	10	10	10	10	7	7	7	7
Temperature Range [°C]	4–40	4–40	4–40	4–40	4–40	4–40	4–40	4–40
Total Weight [kg]	19	27	23	31	34	42	42	51
Weight Adjustable End Piece [kg]	4	9	4	9	6	11	6	11
Weight Fixed End Piece [kg]	2	5	2	5	4	7	4	7
Footprint [mm]	450x420	450x420	450x420	450x420	480x440	480x440	480x440	480x440
Maximum Column Height [mm]	1,750	1,770	2,100	2,120	1,750	1,780	2,100	2,130

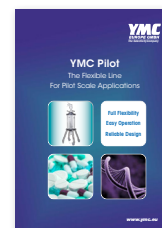
Inner diameter	200				300			
	500 mm		850 mm		500 mm		850 mm	
Version	AB	SR	AB	SR	AB	SR	AB	SR
Bed Length [mm]	90–430 ¹	20–460 ¹	440–780 ¹	360–810 ¹	20–390 ¹	80–450 ¹	330–740 ¹	430–800 ¹
Column Volume [L]	2.9–13.5	0.7–14.4	13.9–25.5	11.4–25.4	1.4–26.6	5.6–30.8	22.8–50.7	29.7–54.8
Pressure Limit [bar]	5	5	5	5	3	3	3	3
Temperature Range [°C]	4–40	4–40	4–40	4–40	4–40	4–40	4–40	4–40
Total Weight [kg]	49	67	59	77	83	126	96	139
Weight Adjustable End Piece [kg]	9	19	9	19	25	48	25	48
Weight Fixed End Piece [kg]	6	15	6	15	18	38	18	38
Footprint [mm]	600x500	600x500	600x500	600x500	650x550	650x550	650x550	650x550
Maximum Column Height [mm]	1,800	1,830	2,150	2,180	1,920	1,830	2,270	2,180

¹depending on packing material and packing method

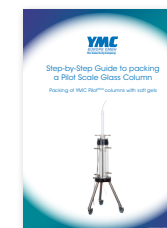
Solvent	AB Version	SR Version
Acetone	Not resistant	Resistant
Acetonitrile	Limited resistant	Resistant
Ammonium dihydrogen phosphate	Resistant	Limited resistant
Cyclohexane	Not resistant	Resistant
Dichloromethane	Not resistant	Resistant
0.1 M EDTA (3%)	Resistant	Resistant
1 M Acetic acid (6%)	Resistant	Limited resistant
Ethanol	Resistant	Resistant
Ethyl acetate	Limited resistant	Resistant
<i>n</i> -Hexane	Not resistant	Resistant
Isopropanol	Resistant	Resistant
Methanol	Resistant	Resistant
2 M NaOH (8%)	Resistant	Limited resistant
1 M HCl (4%)	Resistant	Not resistant
8 M Urea (36%)	Resistant	Resistant
1 M NaCl	Resistant	Limited resistant
0.5 M Na ₂ SO ₄	Resistant	Limited resistant

Not resistant
Limited resistant
Resistant

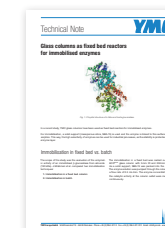
Contact us for more detailed information regarding:



Brochures



Column packing



Technical Notes