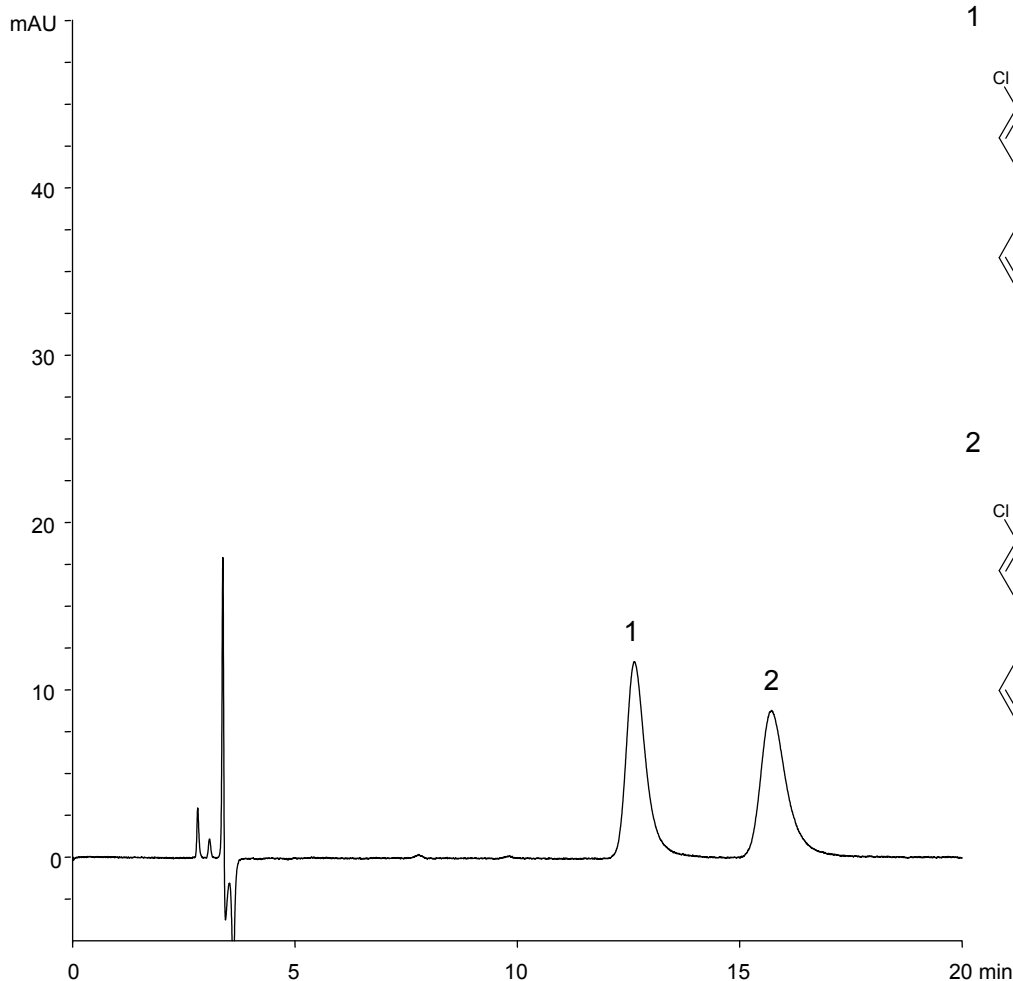


セチリジン (レボセチリジン)

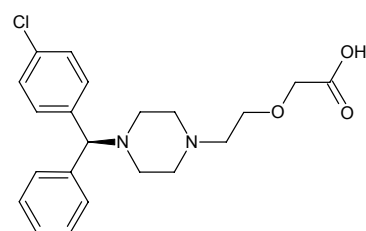
Cetirizine (Levocetirizine)

F141211A

|                |     |
|----------------|-----|
| $\alpha$       | 1.3 |
| R <sub>s</sub> | 3.5 |

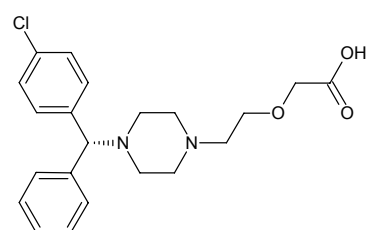


1



(S)-Cetirizine

2



(R)-Cetirizine

(Levocetirizine)

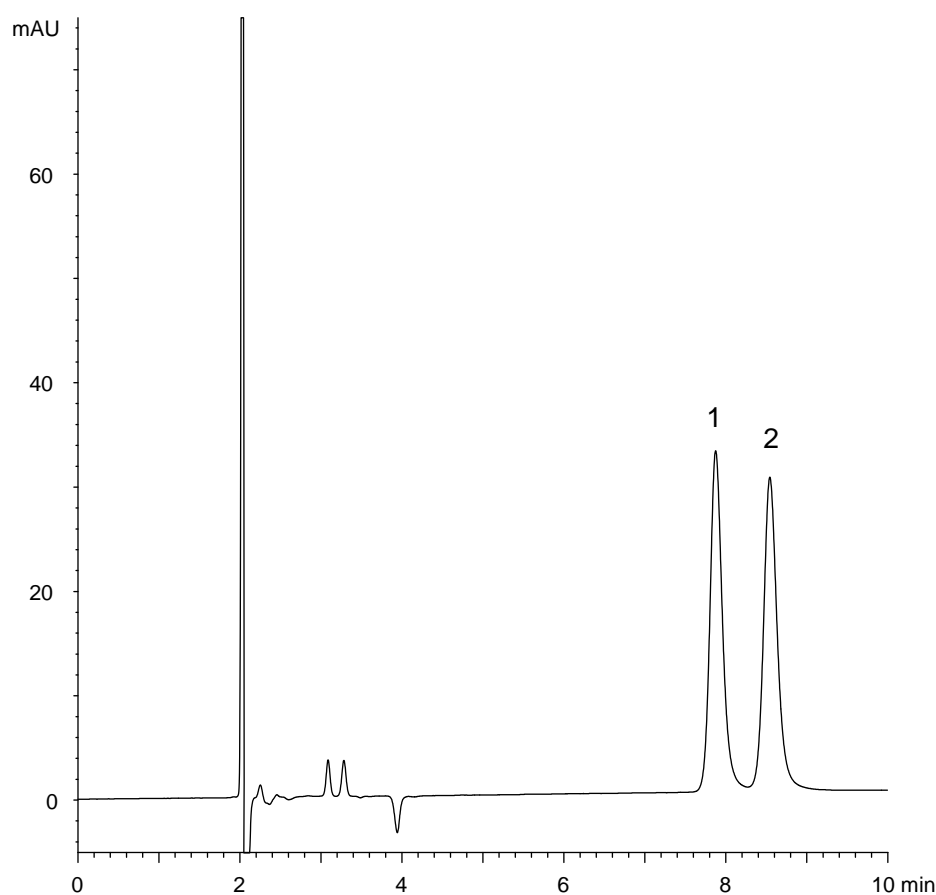
Column : CHIRAL ART Cellulose-C (5  $\mu$ m)  
250 X 4.6 mm I.D.  
Eluent : *n*-hexane/2-propanol/formic acid/diethylamine (70/30/0.1/0.1)  
Flow rate : 1.0 mL/min  
Temperature : 25°C  
Detection : UV at 230 nm  
Injection : 2  $\mu$ L (200  $\mu$ g/mL)

セチリジン (レボセチリジン)

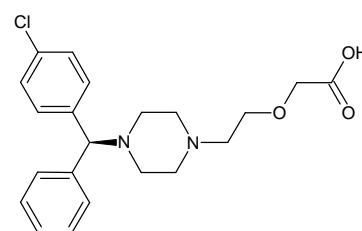
Cetirizine (Levocetirizine)

F180214C

|          |     |
|----------|-----|
| $\alpha$ | 1.1 |
| $R_s$    | 2.4 |

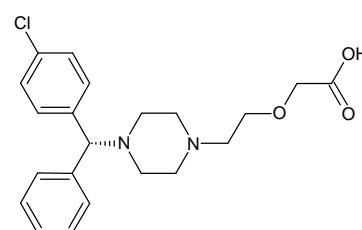


1



(S)-Cetirizine

2



(R)-Cetirizine

(Levocetirizine)

Column : CHIRAL ART Cellulose-SB (3  $\mu$ m)  
150 X 4.6 mm I.D.  
Eluent : acetonitrile/formic acid/diethylamine (100/0.1/0.1)  
Flow rate : 1.0 mL/min  
Temperature : 25°C  
Detection : UV at 230 nm  
Injection : 2  $\mu$ L (200  $\mu$ g/mL)