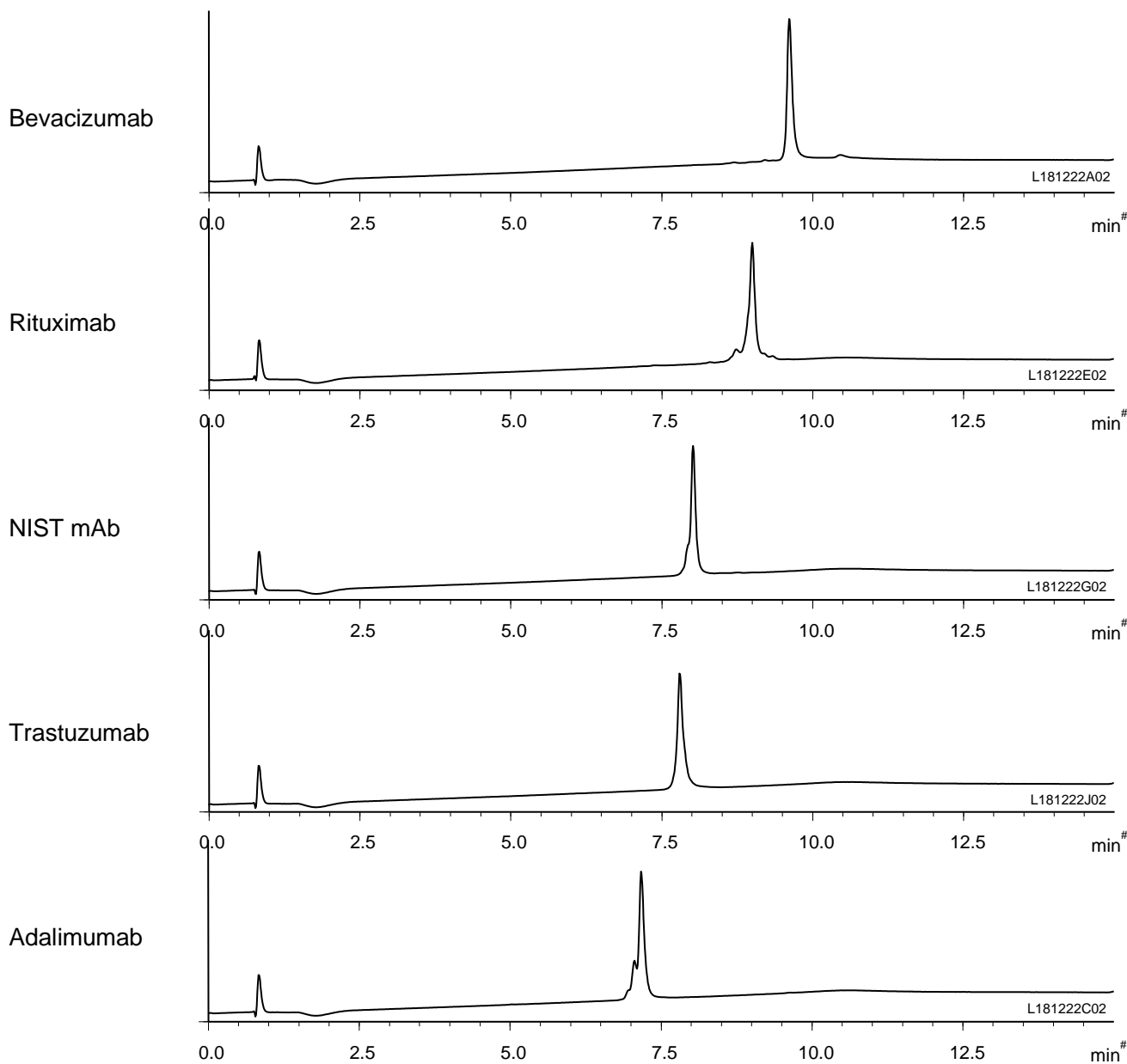


抗体医薬品
Antibody drugs

U190423A



Column : BioPro HIC BF (4 μ m)
100 X 4.6 mm I.D.

Eluent : A) 100 mM NaH₂PO₄-Na₂HPO₄ containing 2.0 M (NH₄)₂SO₄ (pH 7.0)
B) 100 mM NaH₂PO₄-Na₂HPO₄ (pH 7.0)
0-100%B (0-10 min), 100%B (10-15 min)

Flow rate : 1.0 mL/min

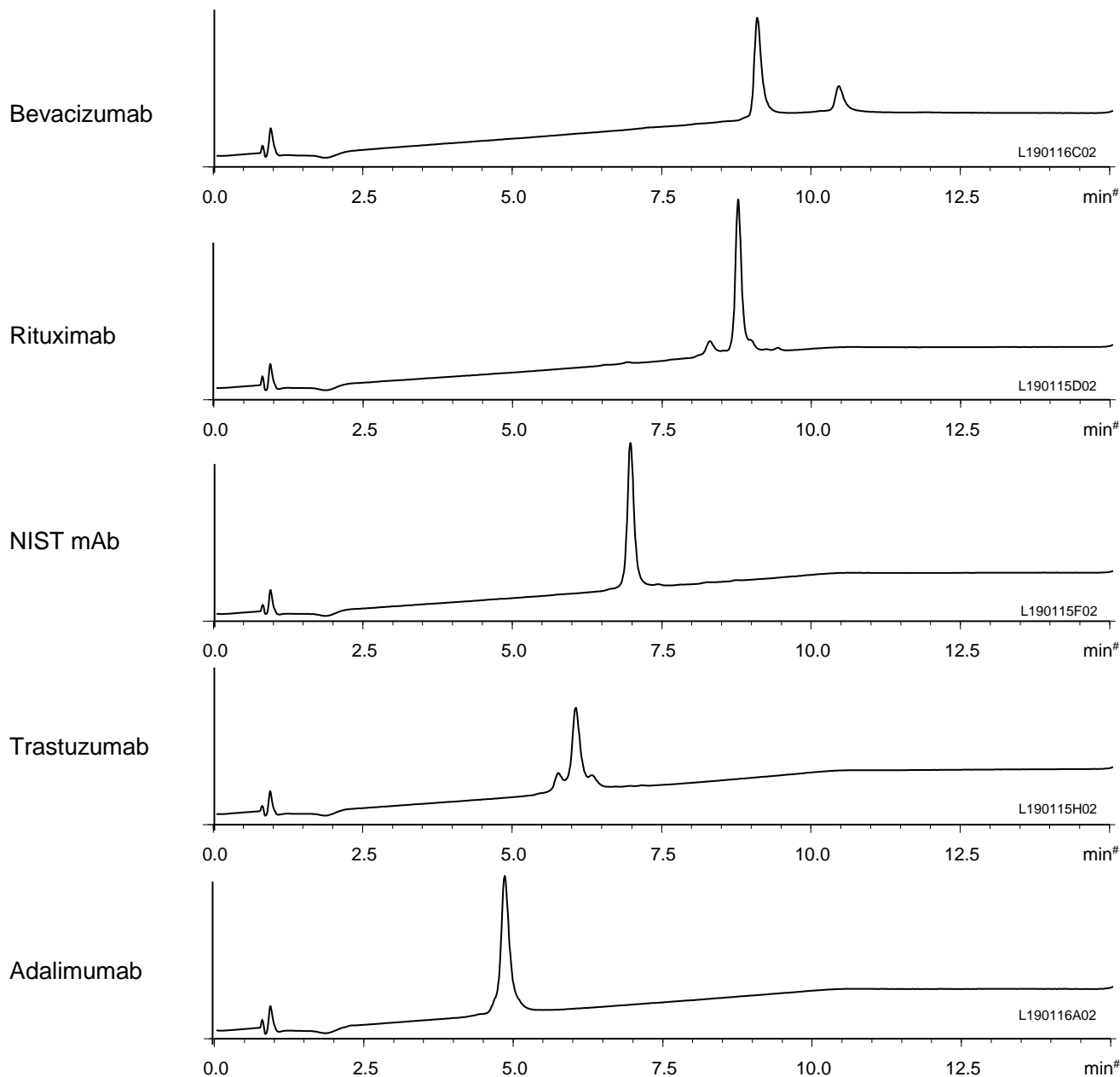
Temperature : 25°C

Detection : UV at 280 nm

Injection : 5 μ L (0.5 mg/mL)

抗体医薬品
Antibody drugs

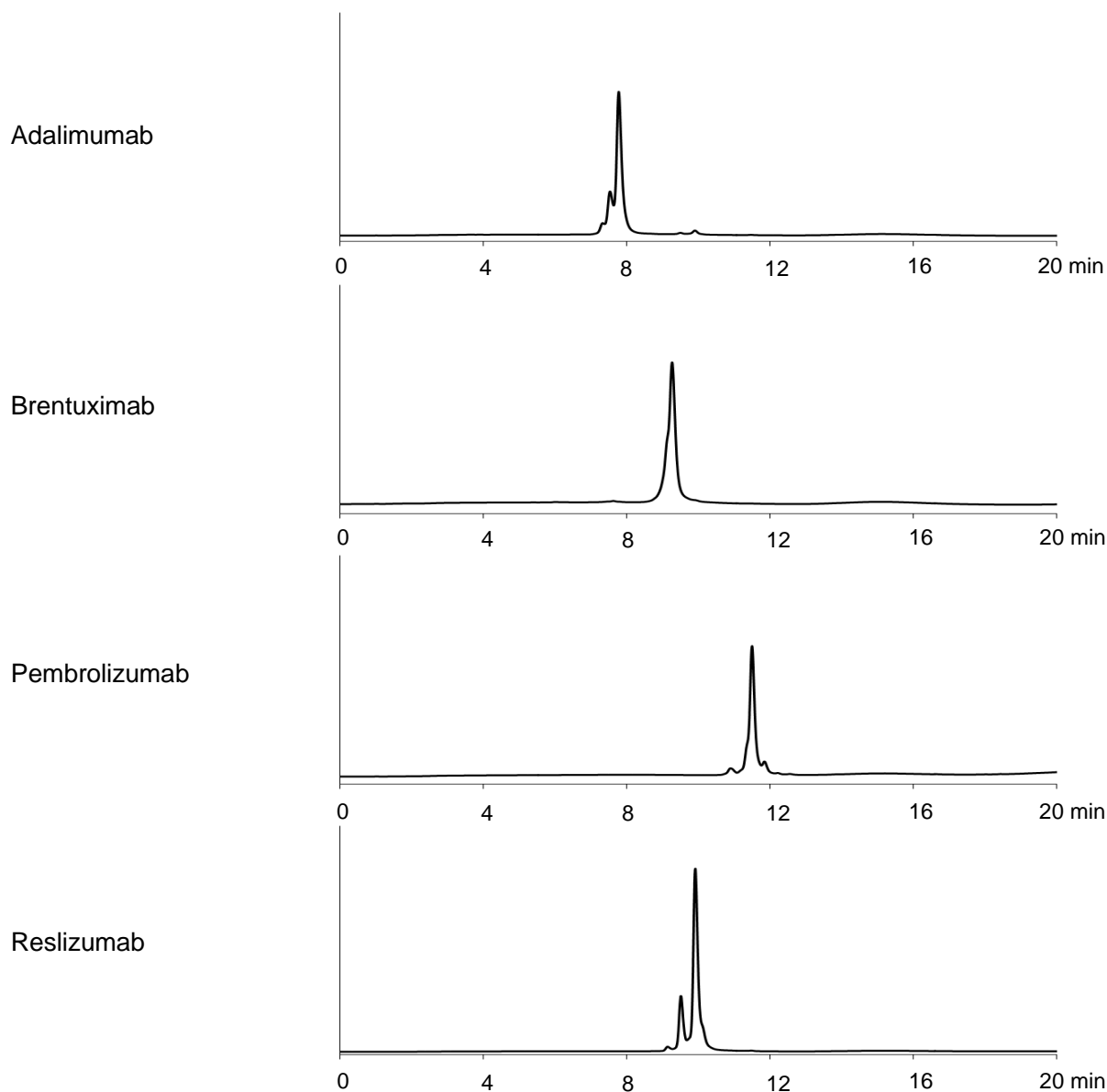
U190426A



Column	: BioPro HIC BF (4 μ m) 100 X 4.6 mm I.D.
Eluent	: A) 100 mM NaH ₂ PO ₄ -Na ₂ HPO ₄ containing 4.0 M NaCl (pH 7.0) B) 100 mM NaH ₂ PO ₄ -Na ₂ HPO ₄ (pH 7.0) 0-100%B (0-10 min), 100%B (10-15 min)
Flow rate	: 1.0 mL/min
Temperature	: 25°C
Detection	: UV at 280 nm
Injection	: 5 μ L (0.5 mg/mL)

抗体医薬品
Antibody drugs

U190422B



Courtesy of University of Geneva

Column	: BioPro HIC BF (4 μ m) 100 X 4.6 mm I.D.
Eluent	: A) 20 mM NaH_2PO_4 - Na_2HPO_4 (pH 7.4) containing 1.5 M $(\text{NH}_4)_2\text{SO}_4$ B) 20 mM NaH_2PO_4 - Na_2HPO_4 (pH 7.4)/2-propanol (85/15) 0-100%B (0-20 min)
Flow rate	: 1.0 mL/min
Temperature	: 20°C
Detection	: FLS at Ex 280 nm, Em 360 nm
Injection	: 3 μ L (2 mg/mL)