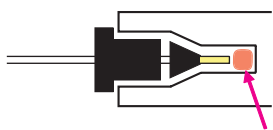


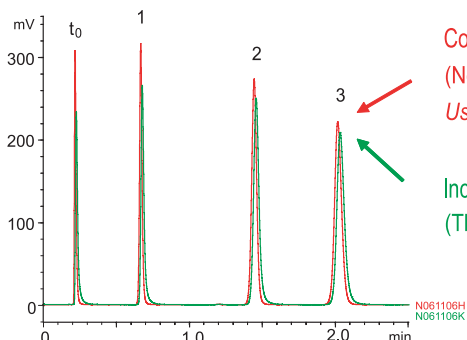
## Connecting your YMC-UltraHT Series

- Please pay attention to liquid connections in order to show original performance as dead volume at the tip of the ferrule will result in undesirable extra column effects (eg. peak tailing, and loss of theoretical plates) Universal connector (XRSFS520) which has movable ferrule and fixing screw enables secure connection.
- Please use a universal connector (XRSFS520) that has a movable ferrule and fixing screw to enable a optimum connection.



Attention is necessary not to have gaps on the ferrule tip. Universal connector is useful to connect column.

Attention to the dead volume



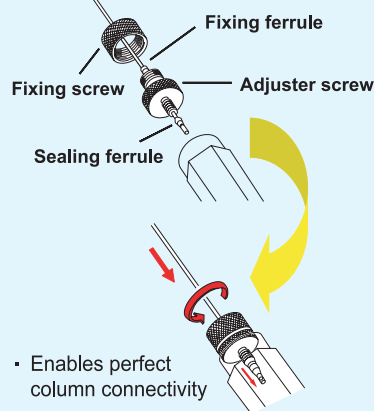
Correct connection  
(No dead volume at the tip of ferrule)  
Use Universal connector

Incorrect connection  
(There are slight gaps at the tip of ferrule)

Column : YMC-UltraHT Pro C18 (2  $\mu$ m, 12 nm)  
50 X 2.0 mmI.D  
System : Ultra Fast LC system  
Eluent : acetonitrile / water (60/40)  
Flow rate : 0.4 mL/min  
Temperature : 25°C  
Detection : UV at 270 nm  
Injection : 1  $\mu$ L  
Sample :  $t_0$ , Uracil, 1. Methyl benzoate,  
2. Naphthalene, 3. Butyl benzoate

|     | Correct | Incorrect |
|-----|---------|-----------|
| N 1 | 7400    | 5800      |
| N 2 | 8500    | 7600      |
| N 3 | 8300    | 7600      |

### Universal connector



- Enables perfect column connectivity
- Easy and reliable (No need for spanners)

Universal connector (single)  
Product No. XRSFS520  
1/16" outer diameter,  
0.13 mm inner diameter, 20 cm length  
Pressure limit : 70 MPa

YMC Co.,Ltd.

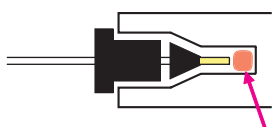
URL : <http://www.ymc.co.jp>

E-mail : [sales@ymc.co.jp](mailto:sales@ymc.co.jp)

UM090827AE

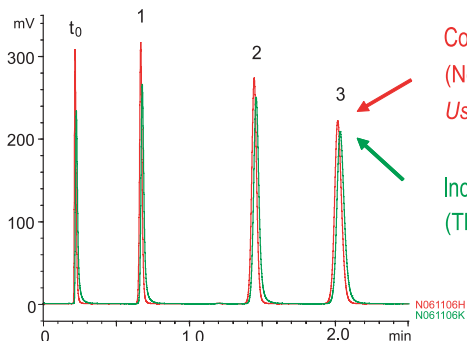
## Connecting your YMC-UltraHT Series

- Please pay attention to liquid connections in order to show original performance as dead volume at the tip of the ferrule will result in undesirable extra column effects (eg. peak tailing, and loss of theoretical plates) Universal connector (XRSFS520) which has movable ferrule and fixing screw enables secure connection.
- Please use a universal connector (XRSFS520) that has a movable ferrule and fixing screw to enable a optimum connection.



Attention is necessary not to have gaps on the ferrule tip. Universal connector is useful to connect column.

Attention to the dead volume



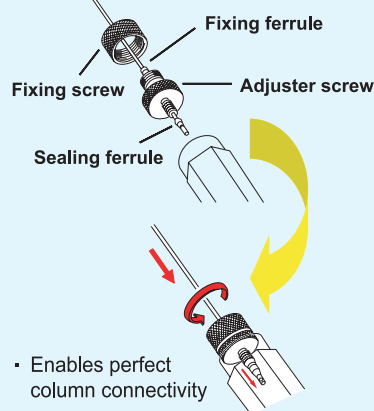
Correct connection  
(No dead volume at the tip of ferrule)  
Use Universal connector

Incorrect connection  
(There are slight gaps at the tip of ferrule)

Column : YMC-UltraHT Pro C18 (2  $\mu$ m, 12 nm)  
50 X 2.0 mmI.D  
System : Ultra Fast LC system  
Eluent : acetonitrile / water (60/40)  
Flow rate : 0.4 mL/min  
Temperature : 25°C  
Detection : UV at 270 nm  
Injection : 1  $\mu$ L  
Sample :  $t_0$ , Uracil, 1. Methyl benzoate,  
2. Naphthalene, 3. Butyl benzoate

|     | Correct | Incorrect |
|-----|---------|-----------|
| N 1 | 7400    | 5800      |
| N 2 | 8500    | 7600      |
| N 3 | 8300    | 7600      |

### Universal connector



- Enables perfect column connectivity
- Easy and reliable (No need for spanners)

Universal connector (single)  
Product No. XRSFS520  
1/16" outer diameter,  
0.13 mm inner diameter, 20 cm length  
Pressure limit : 70 MPa

YMC Co.,Ltd.

URL : <http://www.ymc.co.jp>

E-mail : [sales@ymc.co.jp](mailto:sales@ymc.co.jp)

UM090827AE