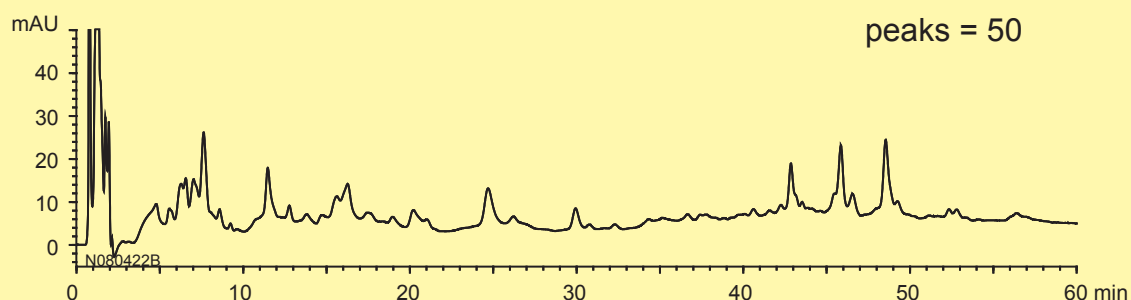


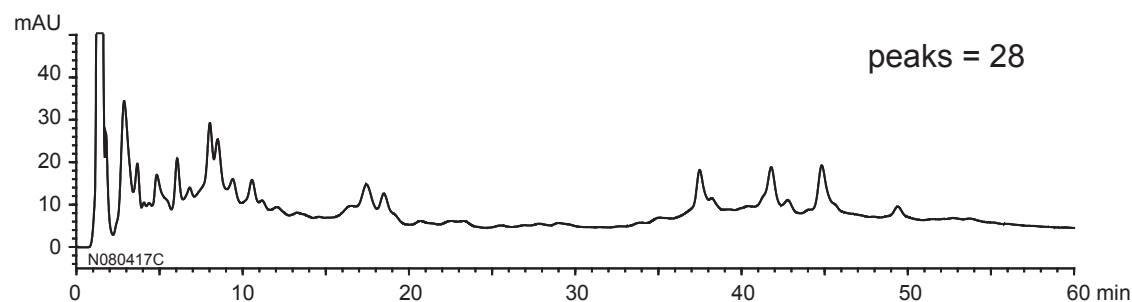
ペプチドマッピング
- YMC-BioPro QAと市販アニオン交換カラムの分離比較 -

N080418Z

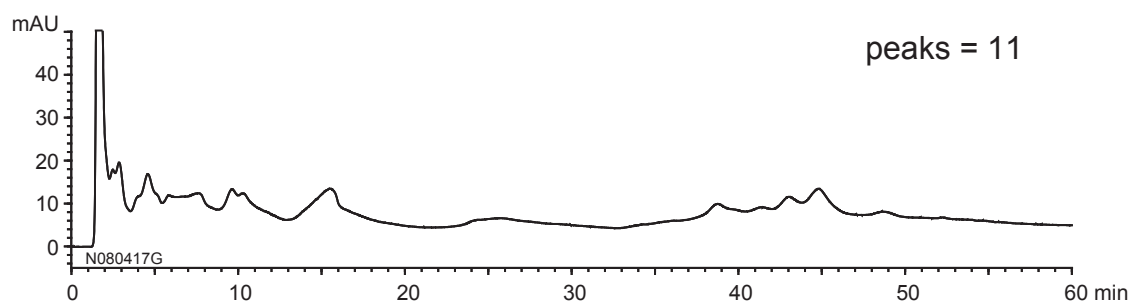
YMC-BioPro QA
5 μ m, 50 X 4.6 mmI.D.



A社 (porous Q type)
10 μ m, 50 X 4.6 mmI.D.



B社 (porous Q type)
10 μ m, 50 X 5.0 mmI.D.



Eluent	: A) 20 mM Tris-HCl (pH 8.6) B) 20 mM Tris-HCl (pH 8.6) containing 0.5 M NaCl 0-15%B (0-30 min), 15-60%B (30-60 min)
Flow rate	: 0.5 mL/min
Temperature	: 25°C
Detection	: UV at 220 nm
Injection	: 20 μ L
Sample	: Tryptic digests of BSA