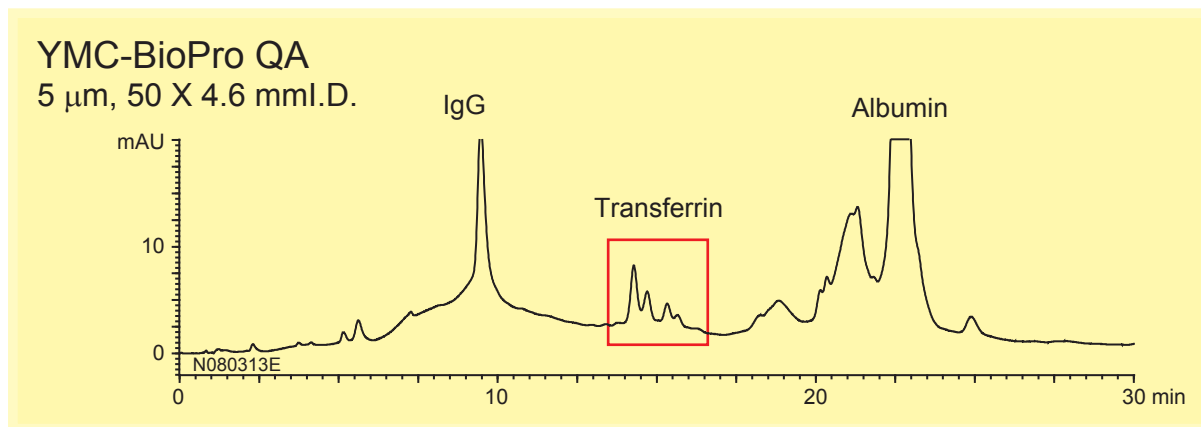
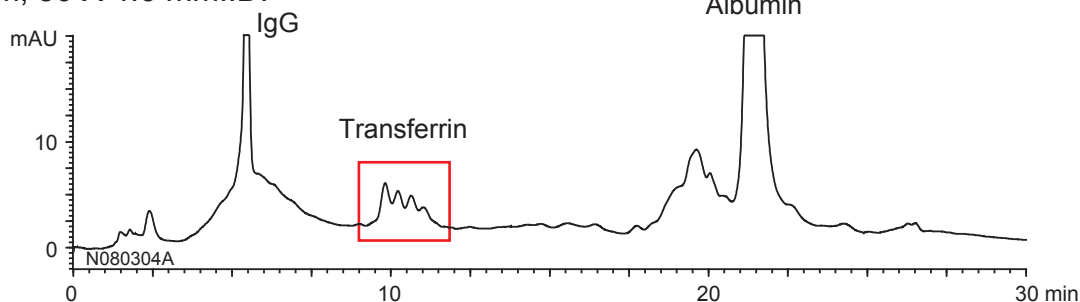


ヒト血清中のタンパク質
- YMC-BioPro QAと市販アニオン交換カラムの分離比較 -

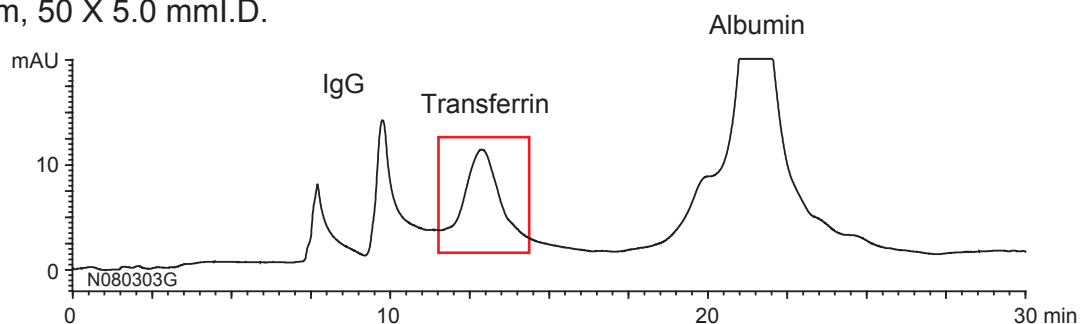
N080403Z



A社 (porous Q type)
10 μ m, 50 X 4.6 mmI.D.



B社 (porous Q type)
10 μ m, 50 X 5.0 mmI.D.



Eluent : A) 20 mM Tris-HCl (pH 8.6)
B) 20 mM Tris-HCl (pH 8.6) containing 0.5 M NaCl
0-30%B (0-15 min), 30-100%B (15-30 min)

Flow rate : 0.5 mL/min

Temperature : 25°C

Detection : UV at 280 nm

Injection : 20 μ L

Sample : Human serum (100 μ L/mL)