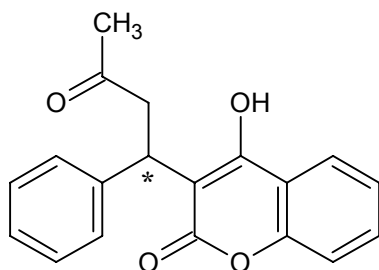
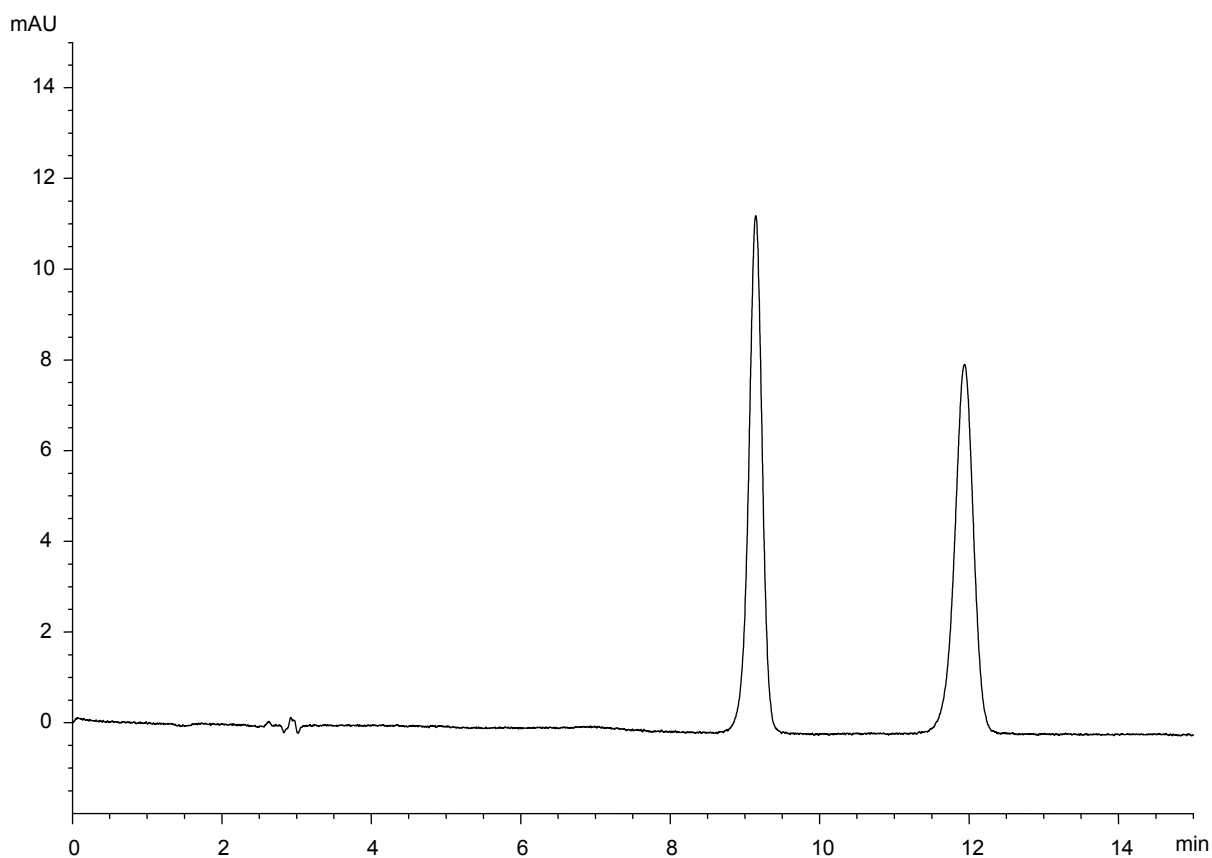


ワルファリン
Warfarin

F140618A



α	1.5
Rs	7.3



Column : YMC CHIRAL Cellulose-SB (5 μ m)
250 X 4.6 mm I.D.

Eluent : acetonitrile/20 mM phosphoric acid (50/50)

Flow rate : 1.0 mL/min

Temperature : 25°C

Detection : UV at 254 nm

Injection : 2 μ L (200 μ g/mL)