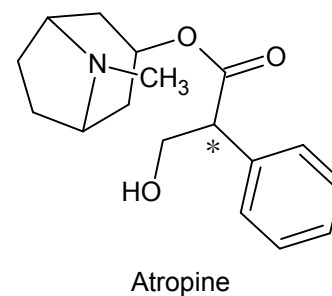
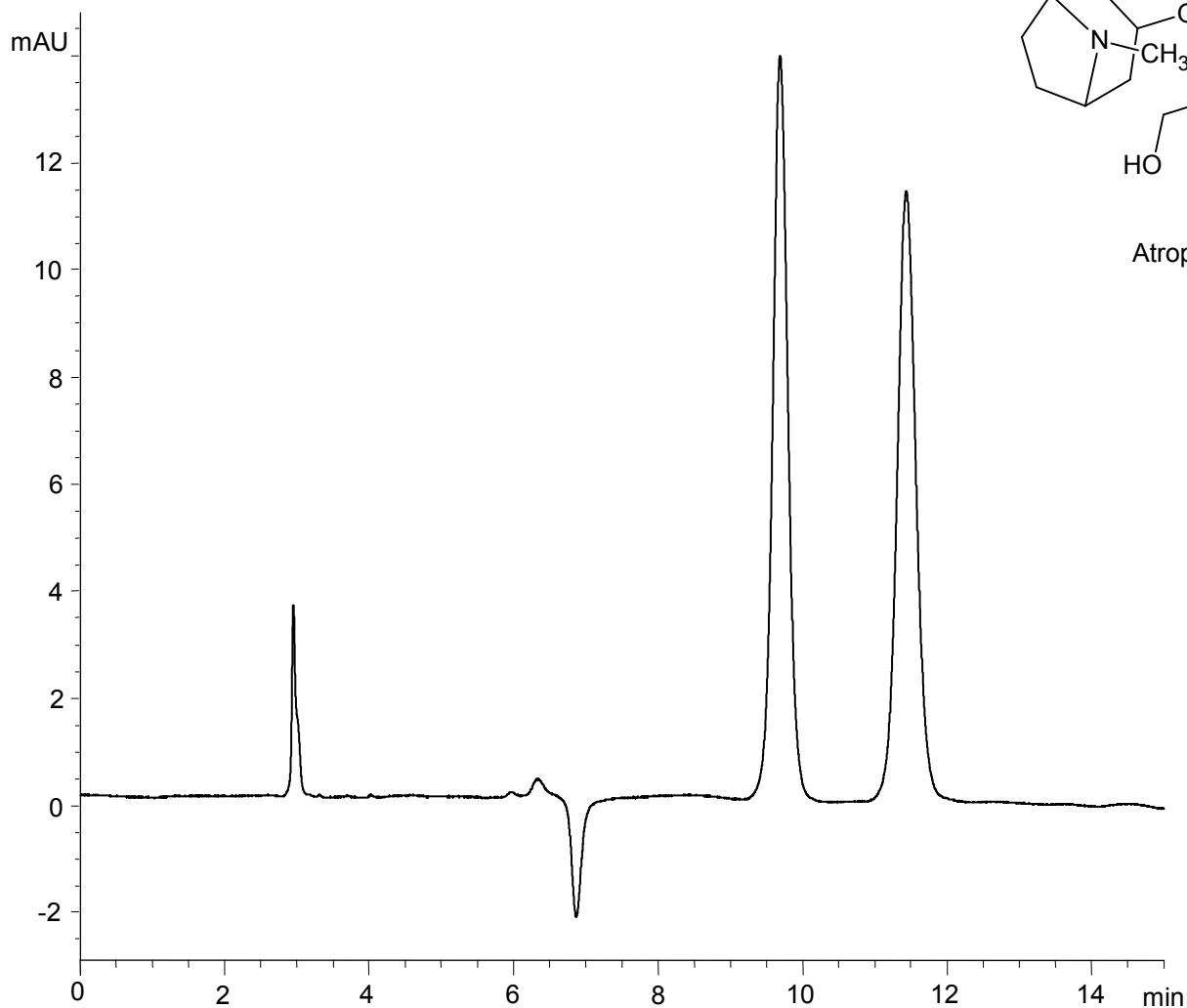


アトロピン
Atropine

H131008C

α	1.25
Rs	4.18

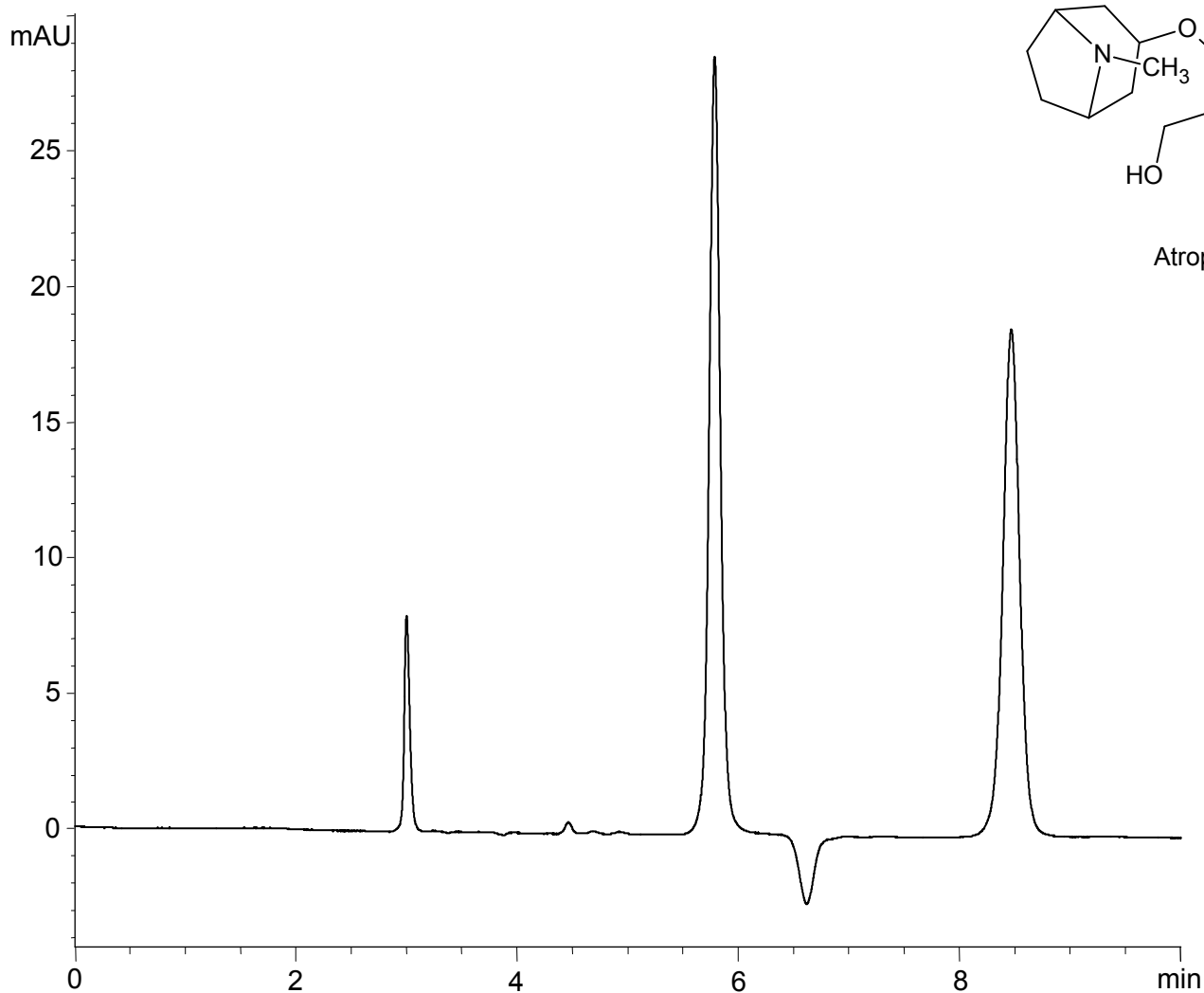


Column : YMC CHIRAL Amylose-C (5 μ m)
250 X 4.6 mm I.D.
Eluent : *n*-hexane/ethanol/ethanolamine (87/13/0.1)
Flow rate : 1.0 mL/min
Temperature : 25°C
Detection : UV at 230 nm
Injection : 2 μ L (1 mg/mL)

アトロピン
Atropine

H131009C

α	1.93
Rs	12.0



Column : YMC CHIRAL Cellulose-C (5 μ m)
250 X 4.6 mm I.D.
Eluent : *n*-hexane/ethanol/ethanolamine (90/10/0.1)
Flow rate : 1.0 mL/min
Temperature : 25°C
Detection : UV at 230 nm
Injection : 2 μ L (1 mg/mL)