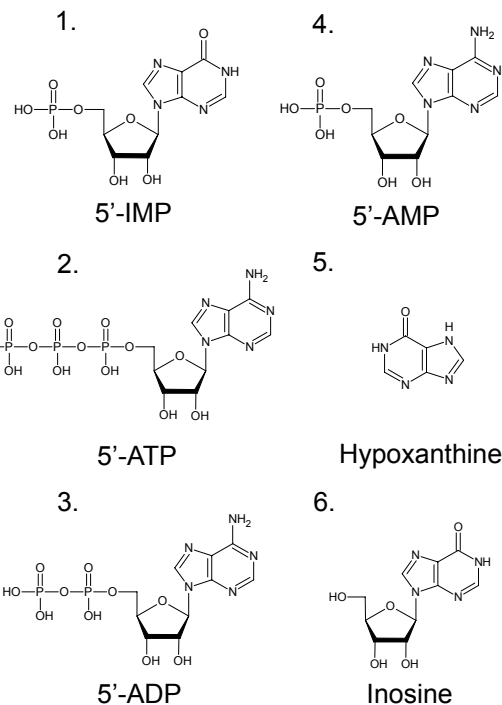
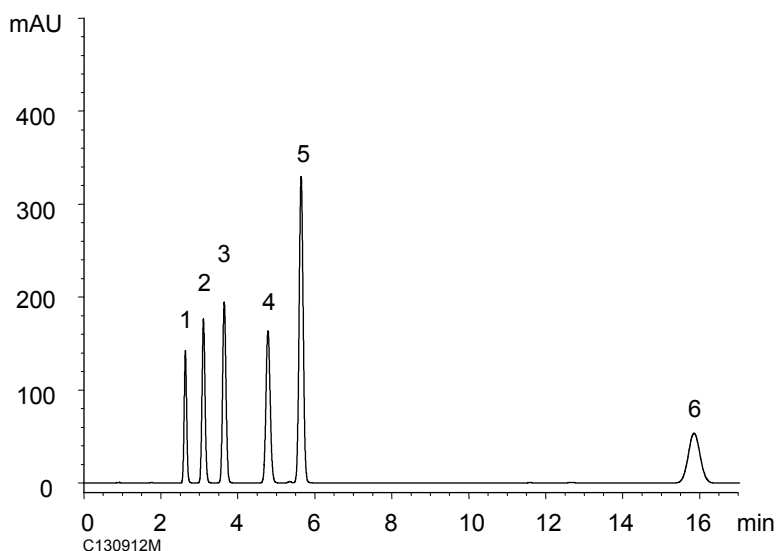


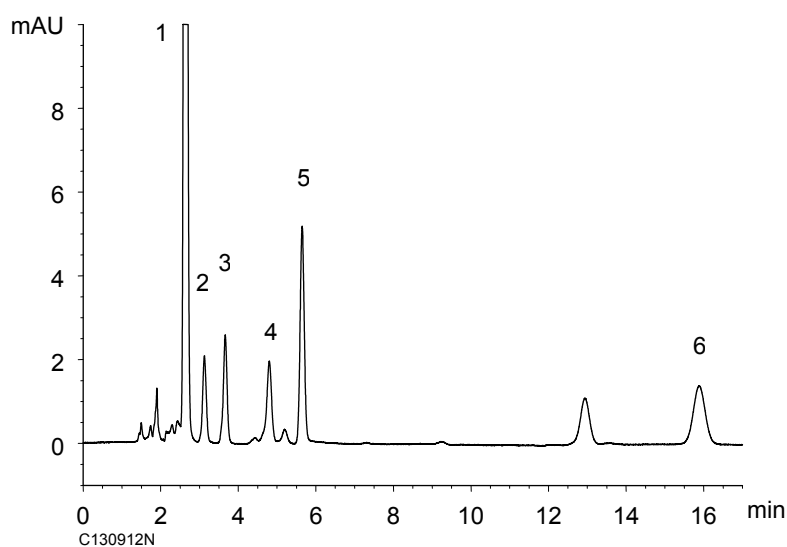
マグロ肉中の ATP とその関連物質 ATP and its related compounds in Tuna meat

C130912L

(A) Standard (0.05 mg/mL)



(B) Tuna meat



Sample preparation procedure

1 g of Tuna meat
 ↓ ← 1 M HClO₄ 5 mL
 Homogenized
 ↓
 Centrifuged (3000 rpm, 5 min)
 ↓
 Supernatant
 ↓
 Adjusted pH to 7.0 with 1 M NaHCO₃
 ↓
 Diluted to 100 mL with eluent
 ↓
 Filtered

Column : YMC-Triart C18 (5 μm, 12 nm)
 150 X 3.0 mm I.D.
 Eluent : 50 mM KH₂PO₄-K₂HPO₄ (pH 6.8)
 Flow rate : 0.425 mL/min
 Temperature : 40
 Detection : UV at 260 nm
 Injection : 6 μL